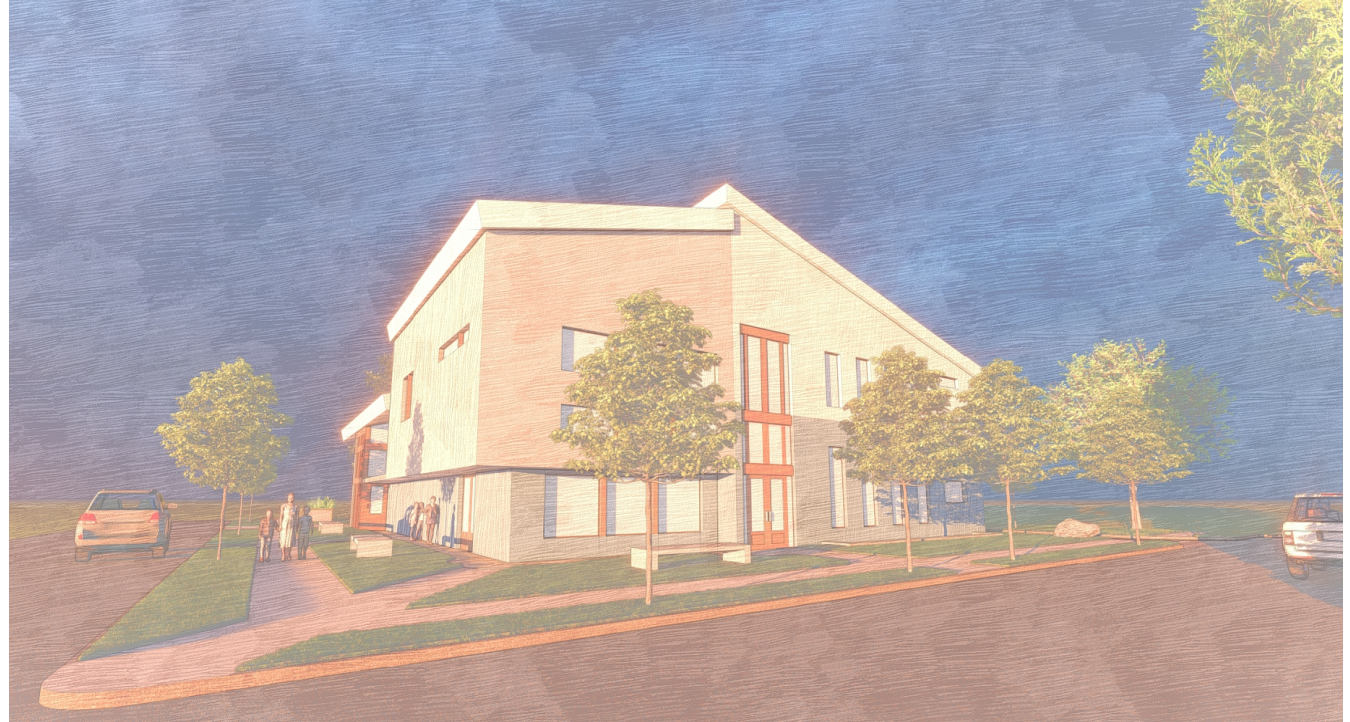


# SPOONER MEMORIAL LIBRARY

## SCHEMATIC DESIGN DRAWING SET - 15 FEBRUARY 2024



Building a Better World  
for All of Us<sup>®</sup>



LEAD DESIGNER / CLIENT LIASON:

**MARCO VINCENT** Assoc.AIA, LEED AP, WELL AP, CDT, phius CPHC  
[mvincent@sehinc.com](mailto:mvincent@sehinc.com) | 651-336-8885

PRINCIPAL ARCHITECT / PROJECT MNGR:

**BRIAN BERGSTROM** AIA, NCARB, LEED AP BD+C  
[bbergstrom@sehinc.com](mailto:bbergstrom@sehinc.com) | 952-215-8118

OWNER'S REPRESENTATIVE

**ANGIE BODZISLAW** | Director of Library  
[director@spoonerlibrary.org](mailto:director@spoonerlibrary.org) | 715-635-2792

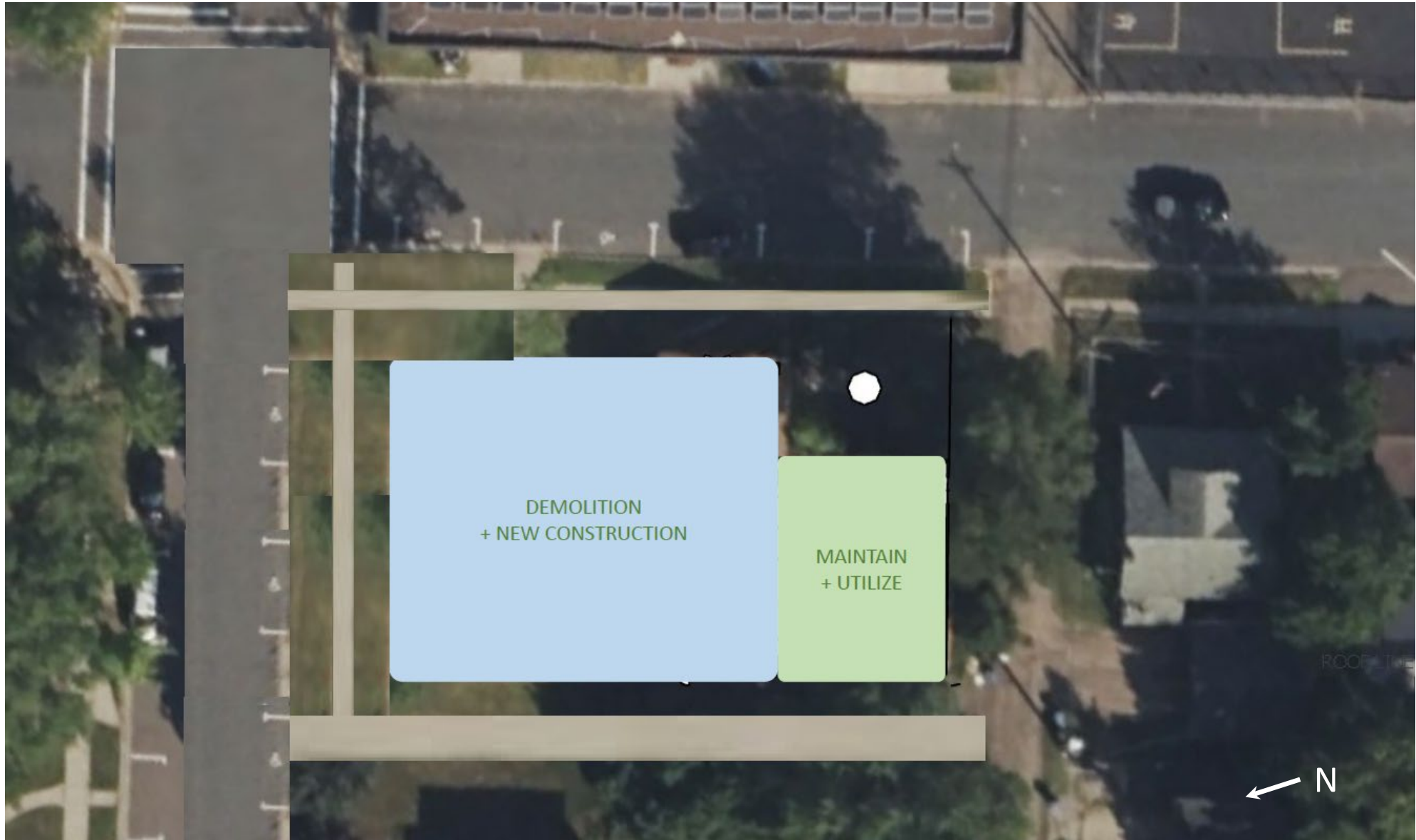
# SPOONER MEMORIAL LIBRARY

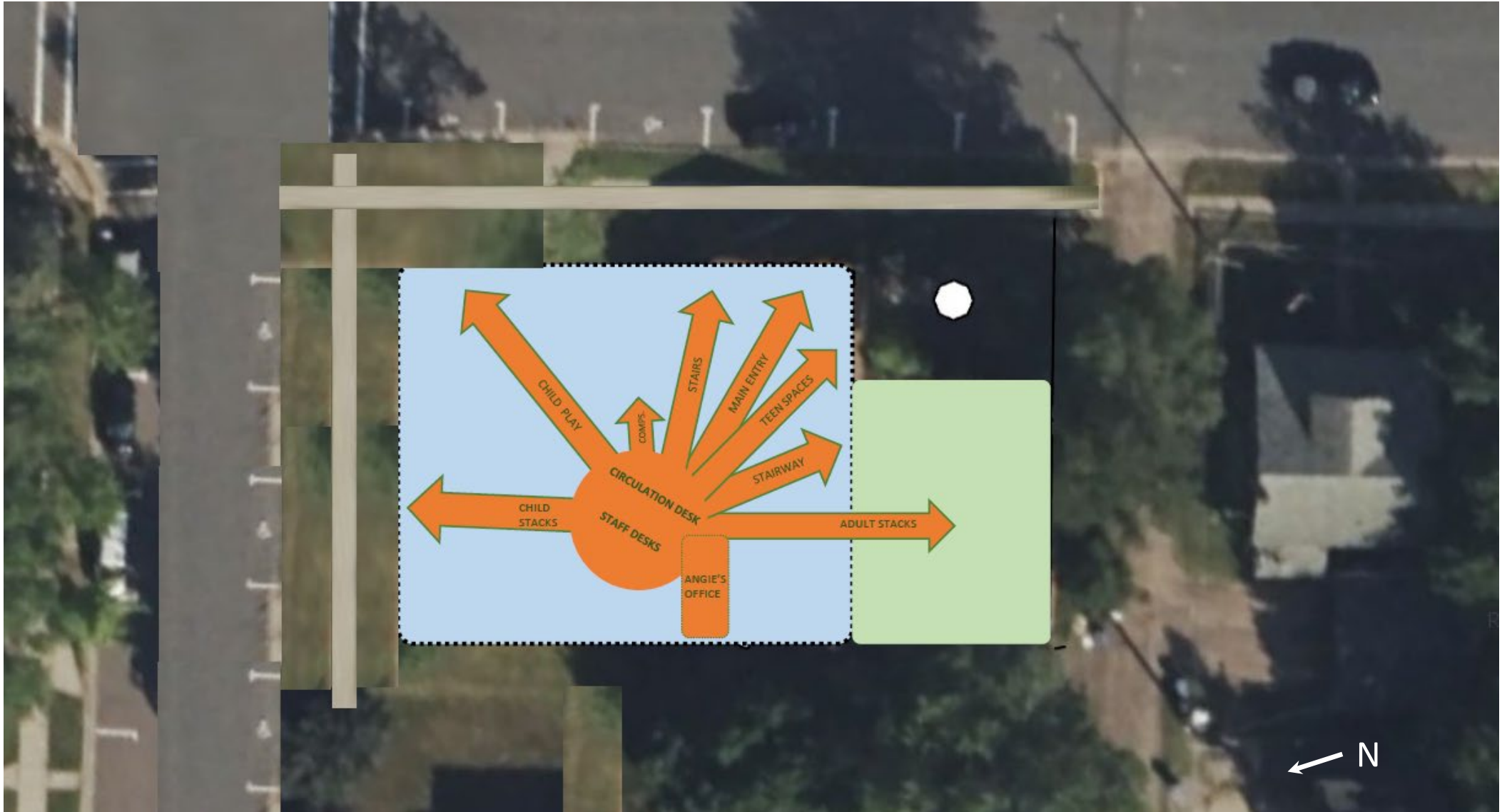
## SCHEMATIC DESIGN DRAWING SET - 4 MAY 2024



Building a Better World  
for All of Us®

1. COVER
2. CONTENTS
3. DEMOLITION CONCEPT
4. PROGRAMMATIC ORIENTATION
5. SITE PLAN - SCHEMATIC - A
6. SITE PLAN - SCHEMATIC - B
7. MAIN FLOOR - UNFURNISHED
8. MAIN FLOOR - VISIBILITY CONCEPT
9. MAIN FLOOR - SHELVES, DESKS, ETC.
10. MAIN FLOOR - FULLY FURNISHED
11. MAIN FLOOR - SHELF FUNCTION
12. MAIN FLOOR - OTHER SERVICES
13. MAIN FLOOR - SEATING ANALYSIS
14. MAIN FLOOR - INTERIOR WINDOWS
15. MAIN FLOOR - VISIBILITY DIAGRAM
16. MAIN FLOOR - DAYLIGHTING (F/ NORTH)
17. MAIN FLOOR - DAYLIGHTING (FROM N+E)
18. MAIN FLOOR - DAYLIGHTING (N+E+S)
19. MAIN FLOOR - DAYLIGHTING (N+E+S+W)
20. 2<sup>ND</sup> FLOOR PLAN - FURNISHED: PROGRM
21. 2<sup>ND</sup> FLOOR PLAN - FURNISHED: PROGRM
22. 2<sup>ND</sup> FLOOR PLAN - FURNISHED: PROGRM
23. 2<sup>ND</sup> FLOOR PLAN - FURNISHED: PRESNT.
24. 2<sup>ND</sup> FLOOR PLAN - SHELF FUNCTION
25. 2<sup>ND</sup> FLOOR PLAN - SEATING ANALYSIS
26. BASEMENT FLOOR PLAN
27. BASEMENT - DAYLIGHTING (FROM N & W)
28. ALL FLOOR PLANS
29. ELEVATION - NORTH
30. ELEVATION - EAST
31. ELEVATION - SOUTH
32. ELEVATION - WEST
33. 3D VIEW (via Sketchup & Lumion)
34. 3D VIEW ...
35. 3D VIEW ...
36. 3D VIEW ...
37. 3D VIEW ...
38. 3D VIEW ...
39. 3D VIEW ...
40. 3D VIEW ...
41. 3D VIEW ...
42. 3D VIEW ...
43. 3D VIEW ...
44. 3D VIEW ...







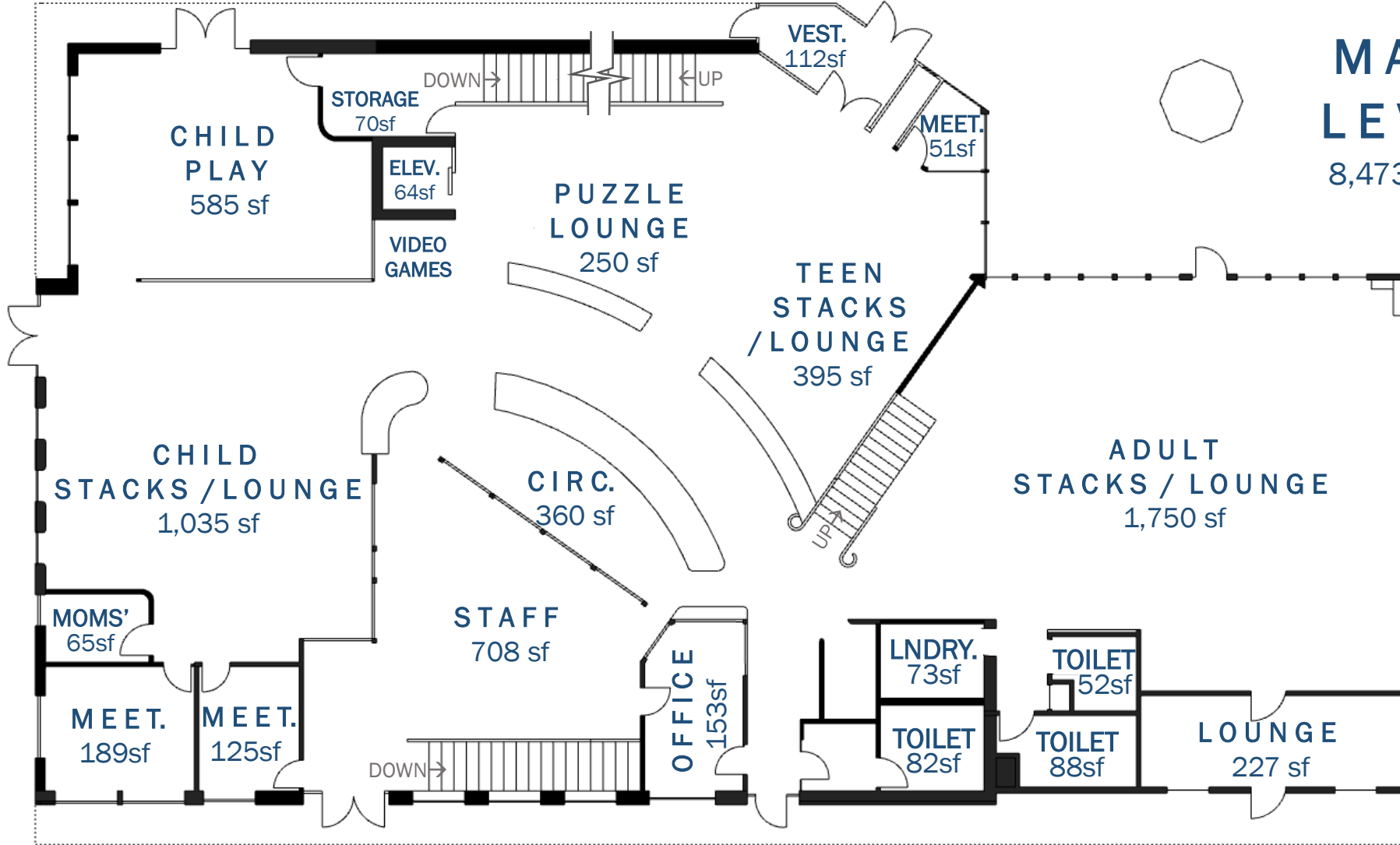
SITE PLAN - SCHEMATIC

Spooner Memorial Library | Schematic Design by Marco Vincent | SEH Inc. | 2.15.2024



SITE PLAN - SCHEMATIC



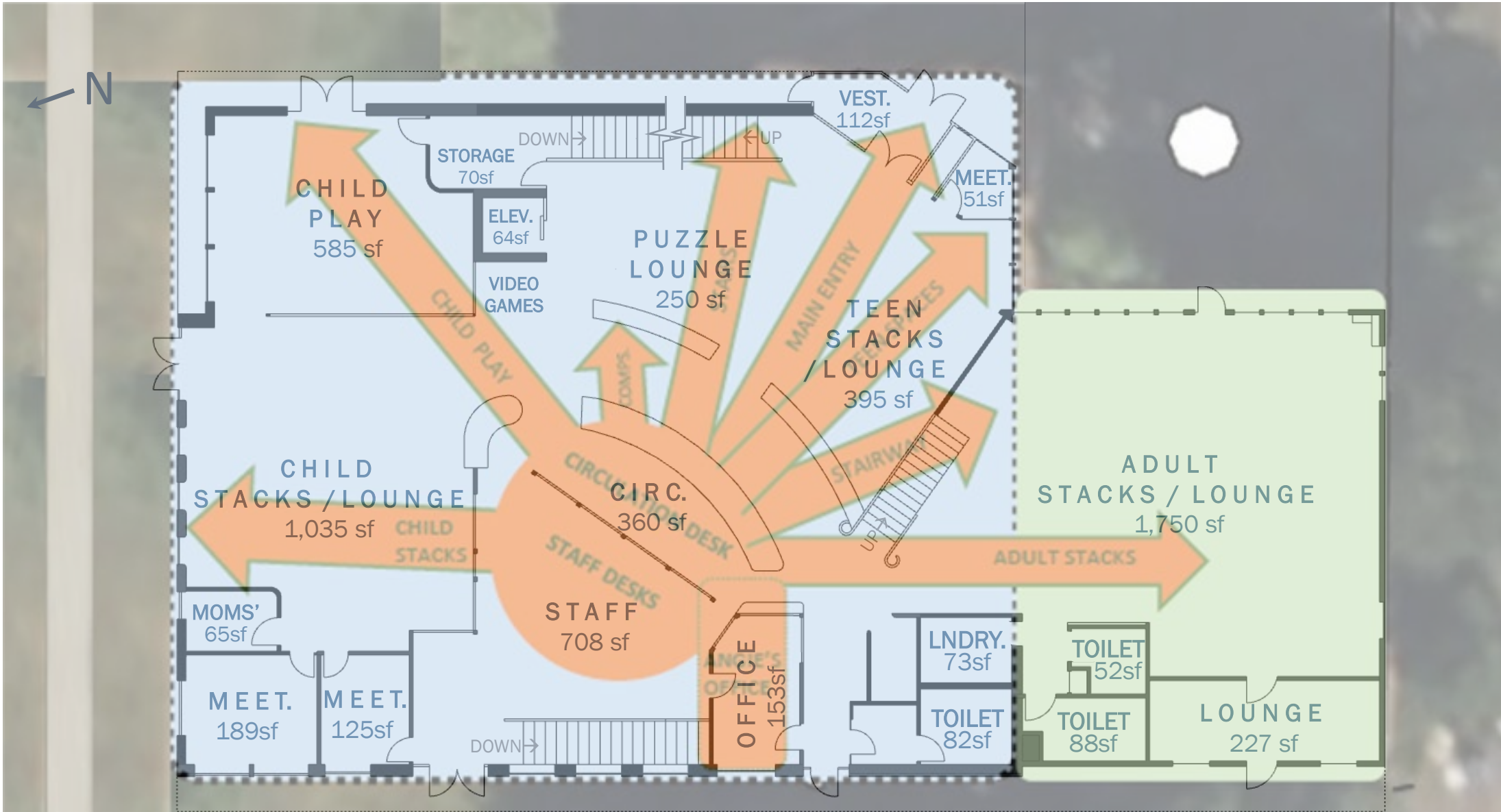


**MAIN LEVEL**  
8,473 sf



MAIN FLOOR PLAN - UNFURNISHED

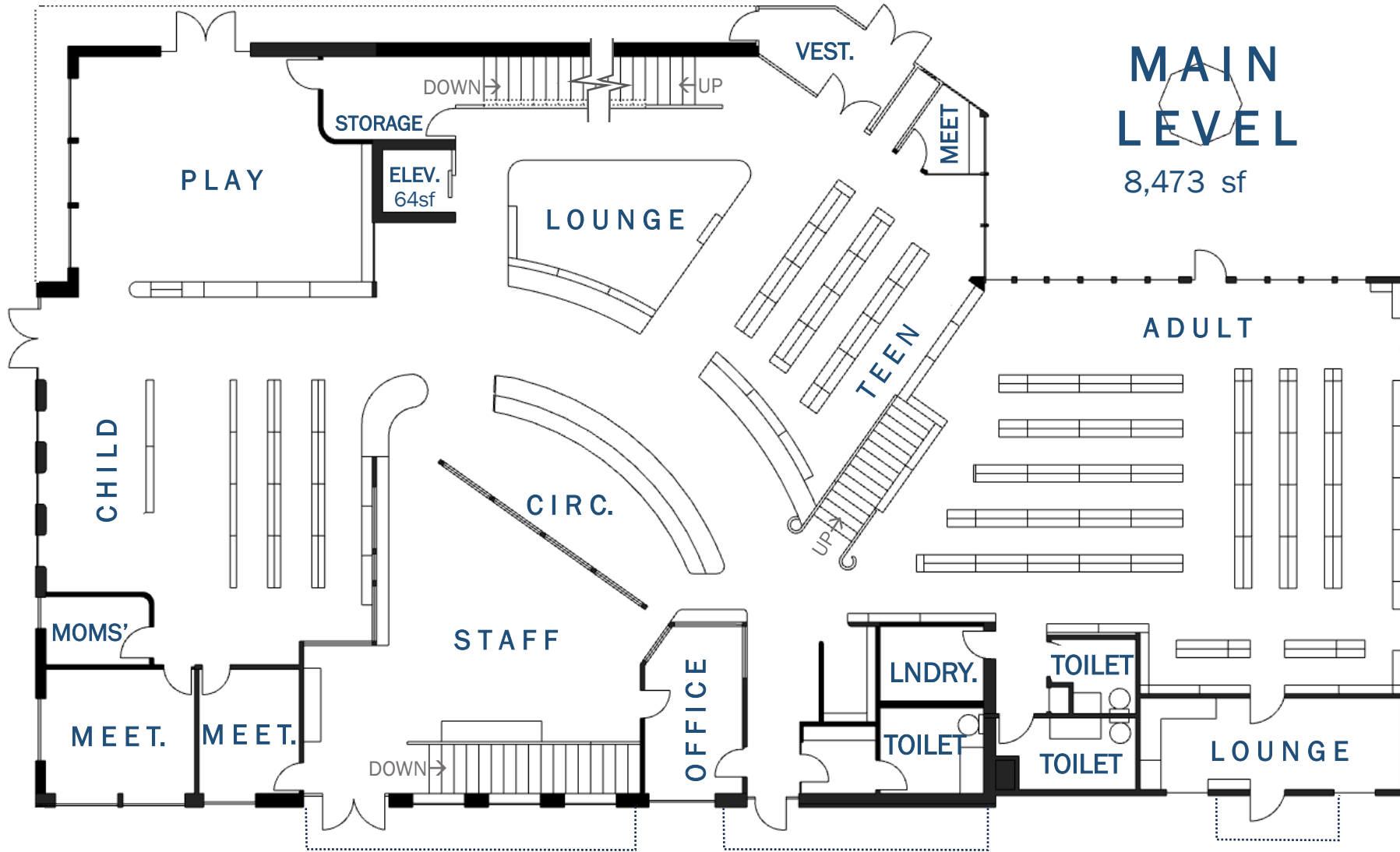
Spooner Memorial Library | Schematic Design by Marco Vincent | SEH Inc. | 2.15.2024



**MAIN FLOOR PLAN - VISIBILITY CONCEPT**

Spooner Memorial Library | Schematic Design by Marco Vincent | SEH Inc. | 2.15.2024





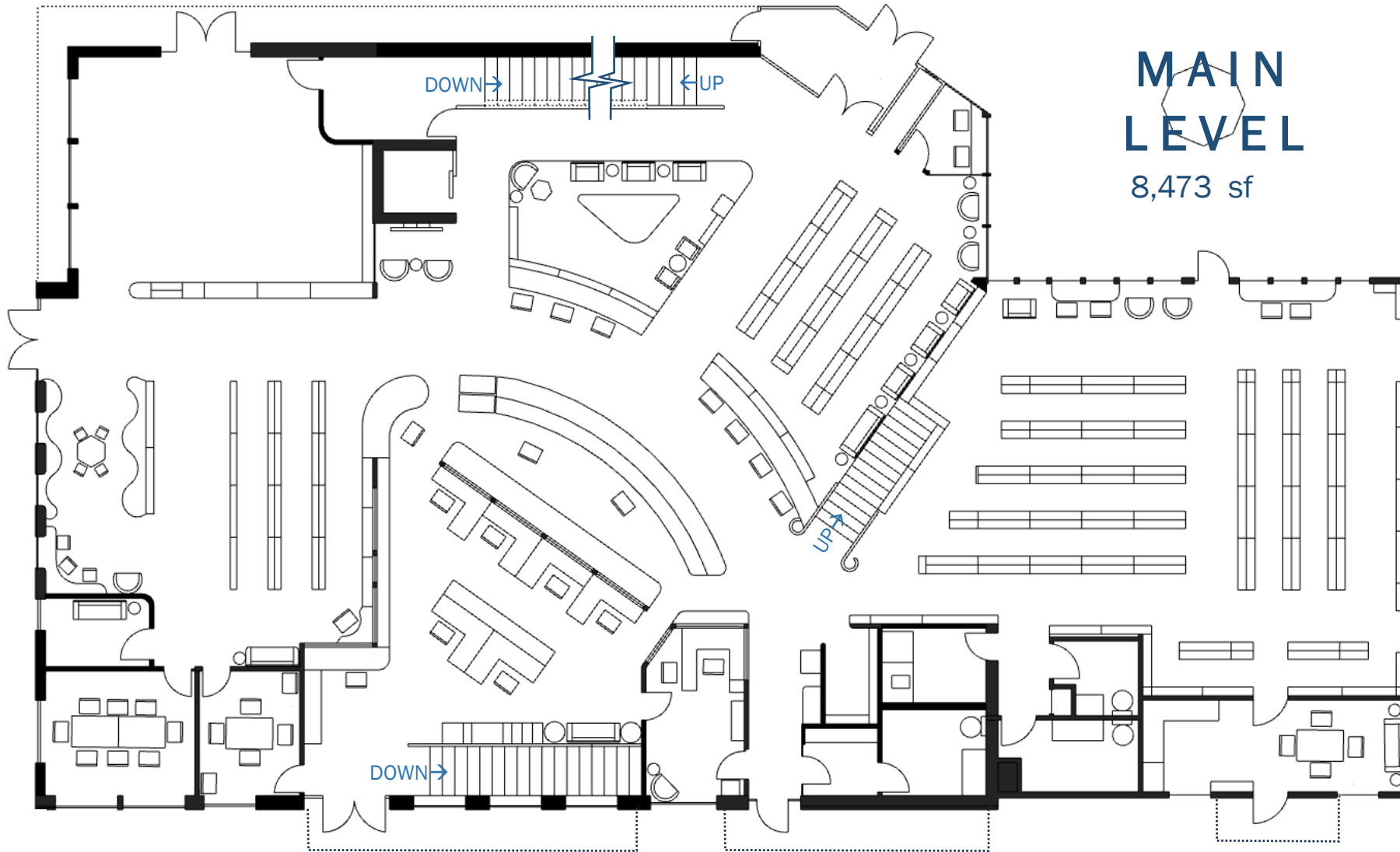
# MAIN LEVEL

8,473 sf



## MAIN FLOOR PLAN - SHELVES, DESKS, CABINETS ONLY

Spooner Memorial Library | Schematic Design by Marco Vincent | SEH Inc. | 2.15.2024



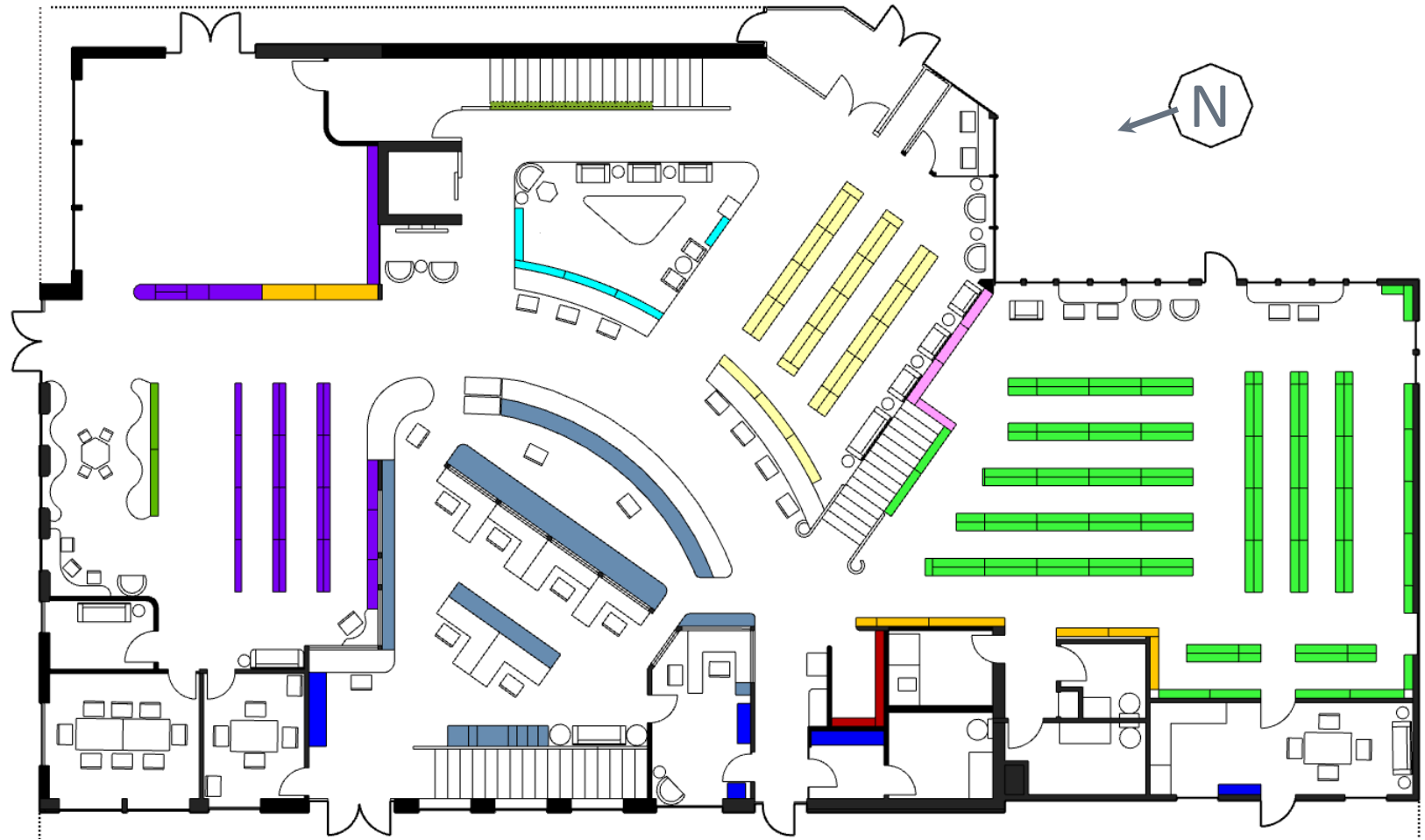
**MAIN  
LEVEL**  
8,473 sf



**MAIN FLOOR PLAN - FULLY FURNISHED**

Spooner Memorial Library | Schematic Design by Marco Vincent | SEH Inc. | 2.15.2024

- ADULT BOOK SHELVES:**  
 90 x (188 books per 10"x5'w five row shelf) = 16,920books
- TEEN BOOK SHELVES:**  
 29 x (114 books per 10"x3'h x 5'w three row shelf)= +3,306 books
- CHILD BOOKS:**  
 23 (9" x 2.5'h x 5'w) picture  
 +4 (12"x 2.5'h x 5'w) board  
 +3 (12" x 2.5'h x 5'w) easy  
 +2 (12" x 2.5'h x 5'w) display
- AUDIO SHELVES**  
 4 x (5' w x 6' h) = 2,420 >  
 > 1,475 audiobooks
- PUZZLE PLACE:**  
 4 x (10" x 3'h x 5'w shelf) =  
 > volume needed
- ART WALLS / SHELVES:**  
 77square or cubic feet: stair  
 40square feet: child area
- DVD SHELVES**  
 5 (5'w x 6'h)+ 2 (5'w x 2.5'h)  
 =3,631 DVDs



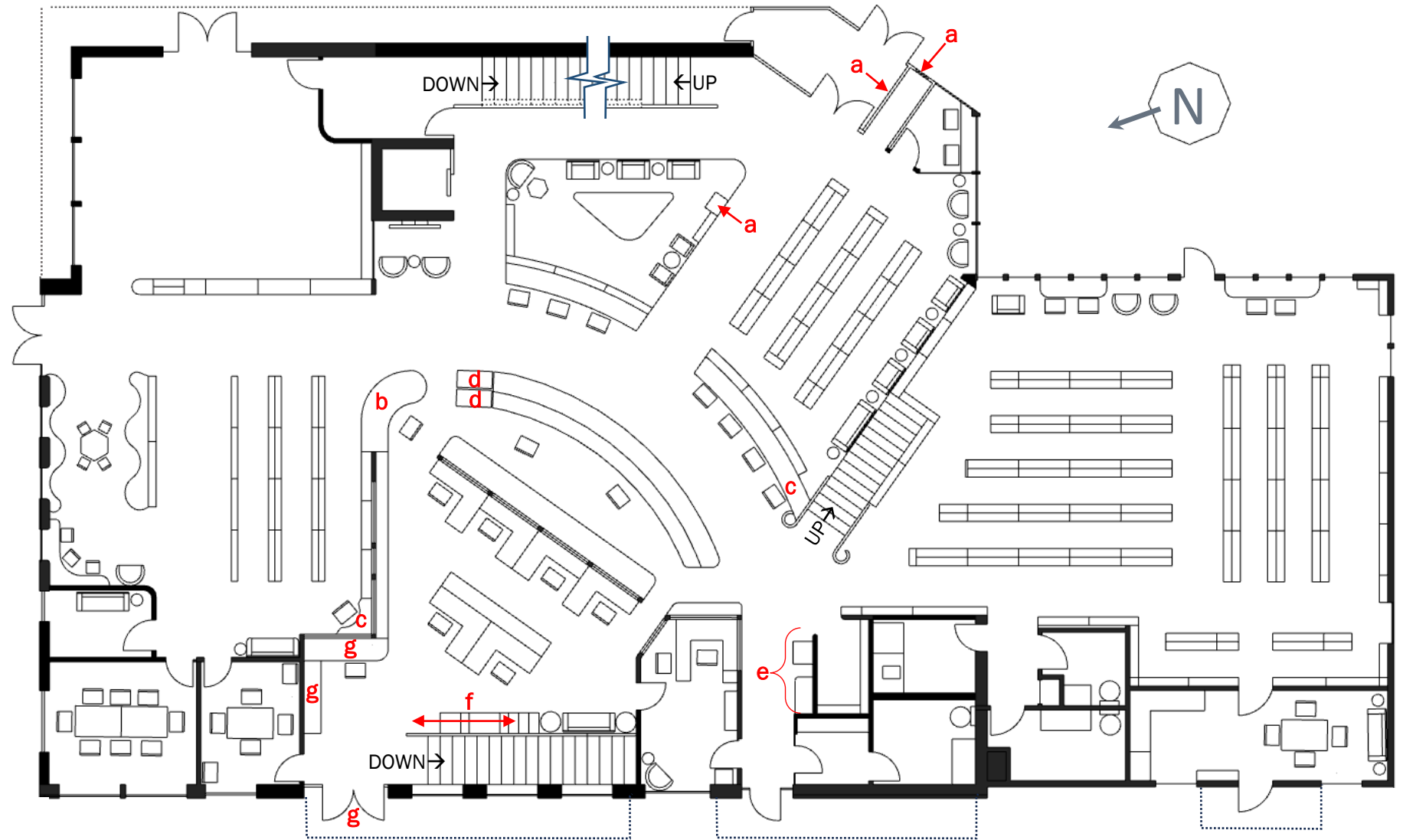
**BOOK NOOK:**  
 3 x (10"x5' four or five row shelves) = +400 books

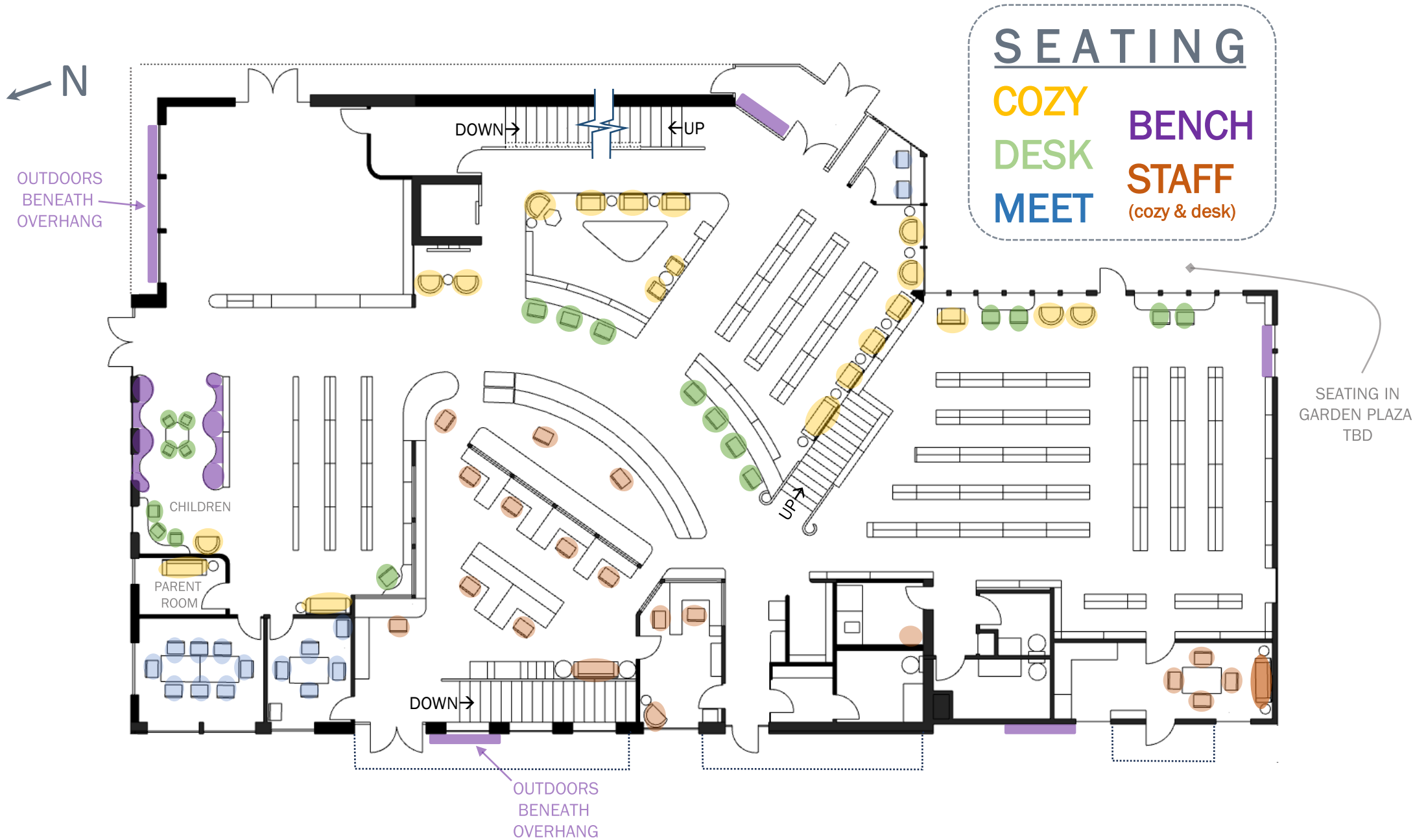
**LOW STAFF SHELVES, DRAWERS, CABINETS:**  
 +510 cubic feet  
 (2.5' or 3'h) x 204sf)

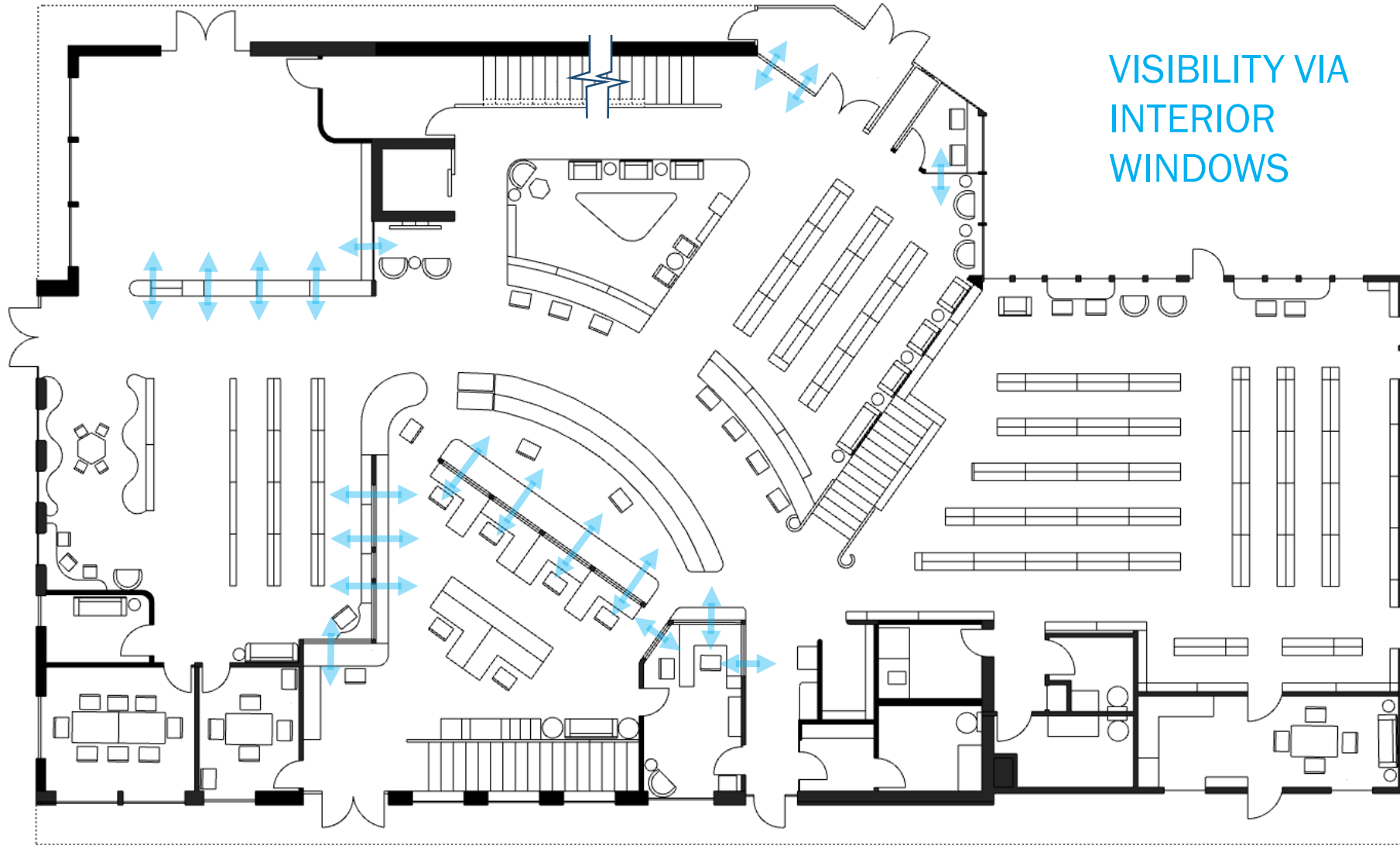
**TALL STAFF SHELVES, CUBBIES, CABINETS:**  
 +400 cubic feet  
 (6'h x 67sf)

## PATRON / STAFF SERVICES

- a)** BOOK RETURNS  
(3 slots; 1 room + 1 cart)
- b)** CHILDREN SERVICES DESK
- c)** CATALOG COMPUTER/DESKS (2)
- d)** BOOK ROLLER CARTS
- e)** COPIER/PRINTER AREA  
& counter w/ stapler, paper punch, etc
- f)** BOOK REPAIR
- g)** DELIVERIES  
7'W x 6'H cubby shelf, computer at large  
work desk, staff only entry/exit

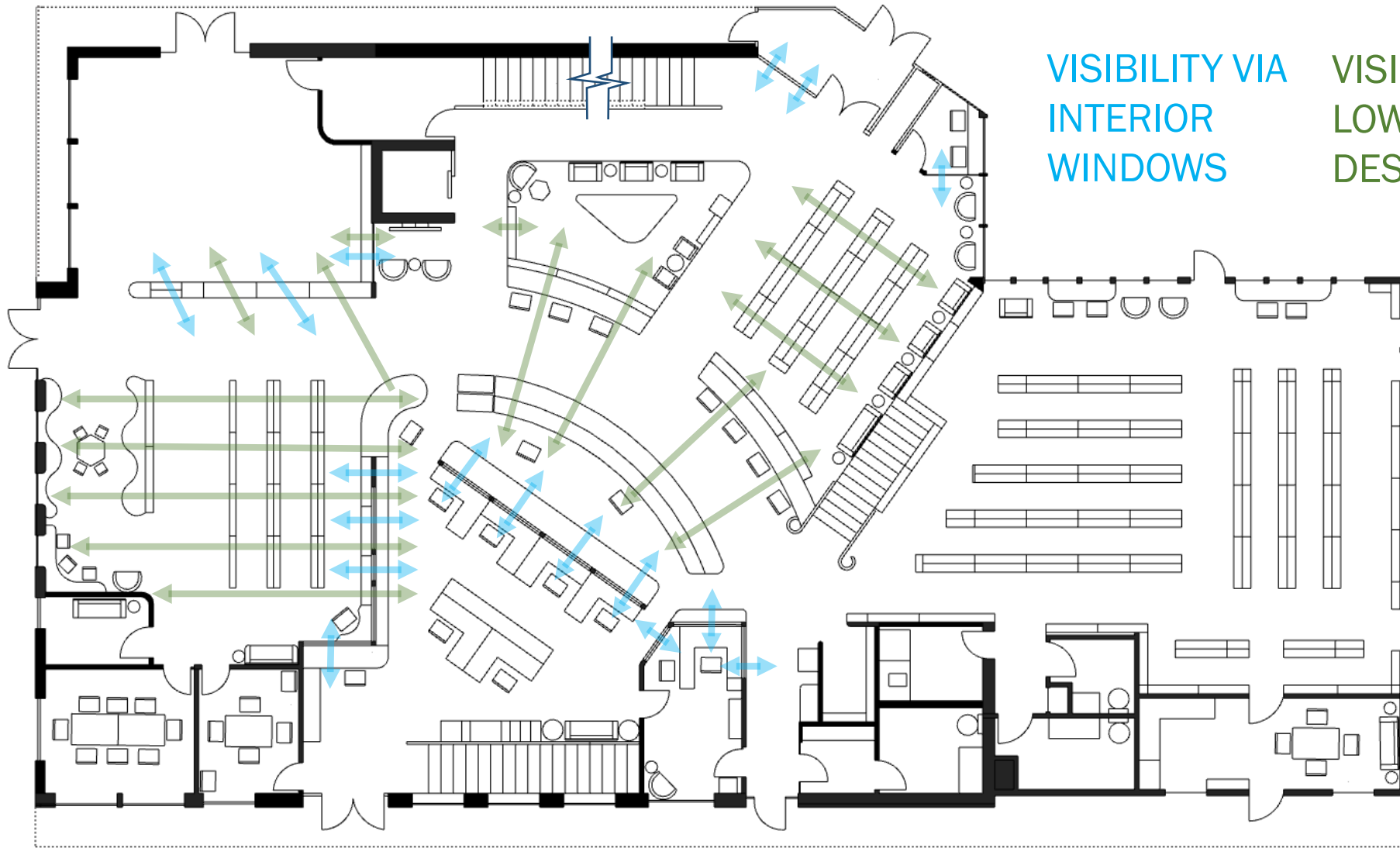






MAIN FLOOR PLAN - VISIBILITY- INTERIOR WINDOWS

Spooner Memorial Library | Schematic Design by Marco Vincent | SEH Inc. | 2.15.2024



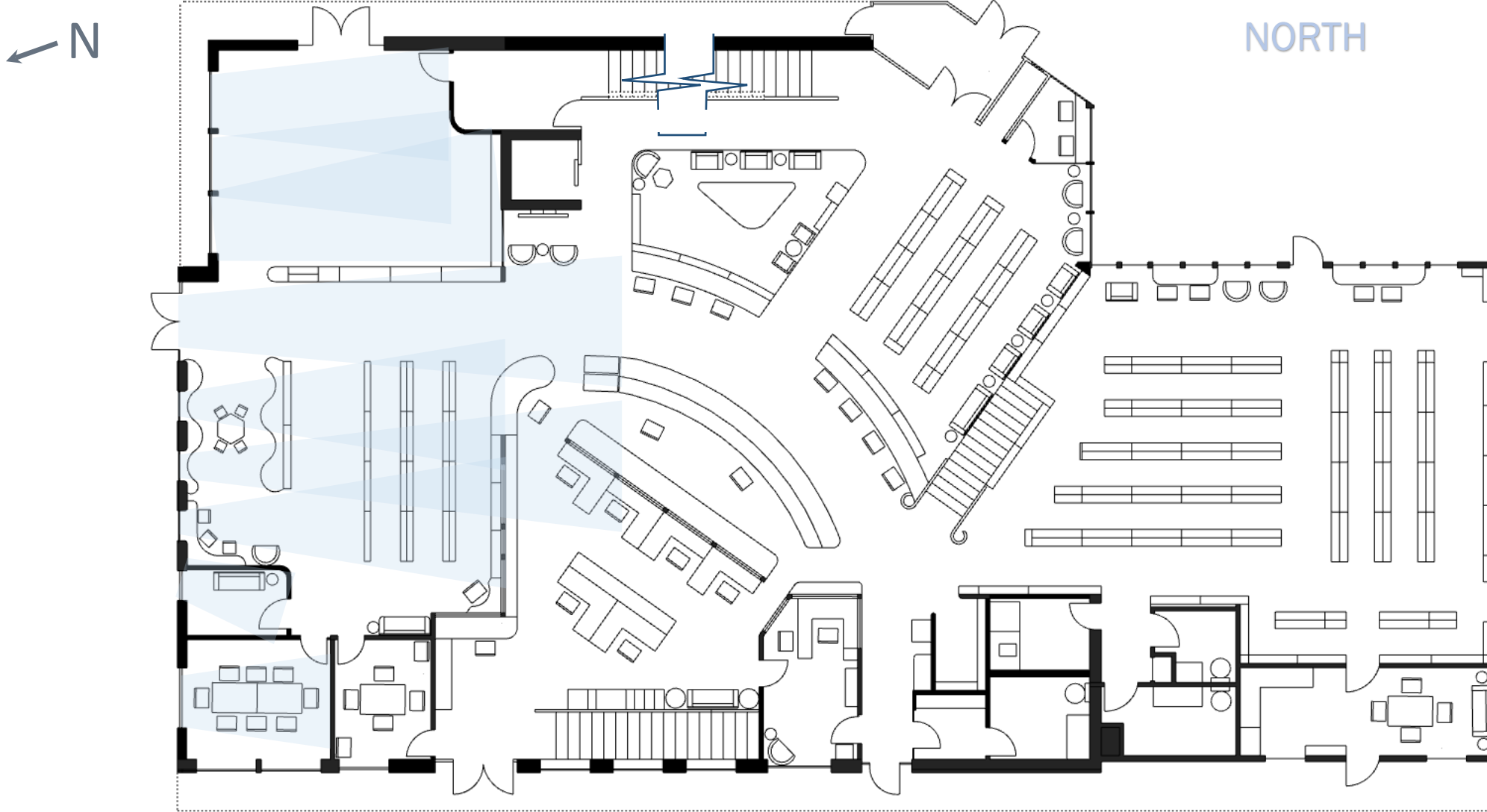
VISIBILITY VIA  
INTERIOR  
WINDOWS

VISIBILITY OVER  
LOW SHELVES &  
DESKS



MAIN FLOOR PLAN - VISIBILITY ANALYSIS

Spooner Memorial Library | Schematic Design by Marco Vincent | SEH Inc. | 2.15.2024



MAIN FLOOR PLAN - DAYLIGHTING ANALYSIS

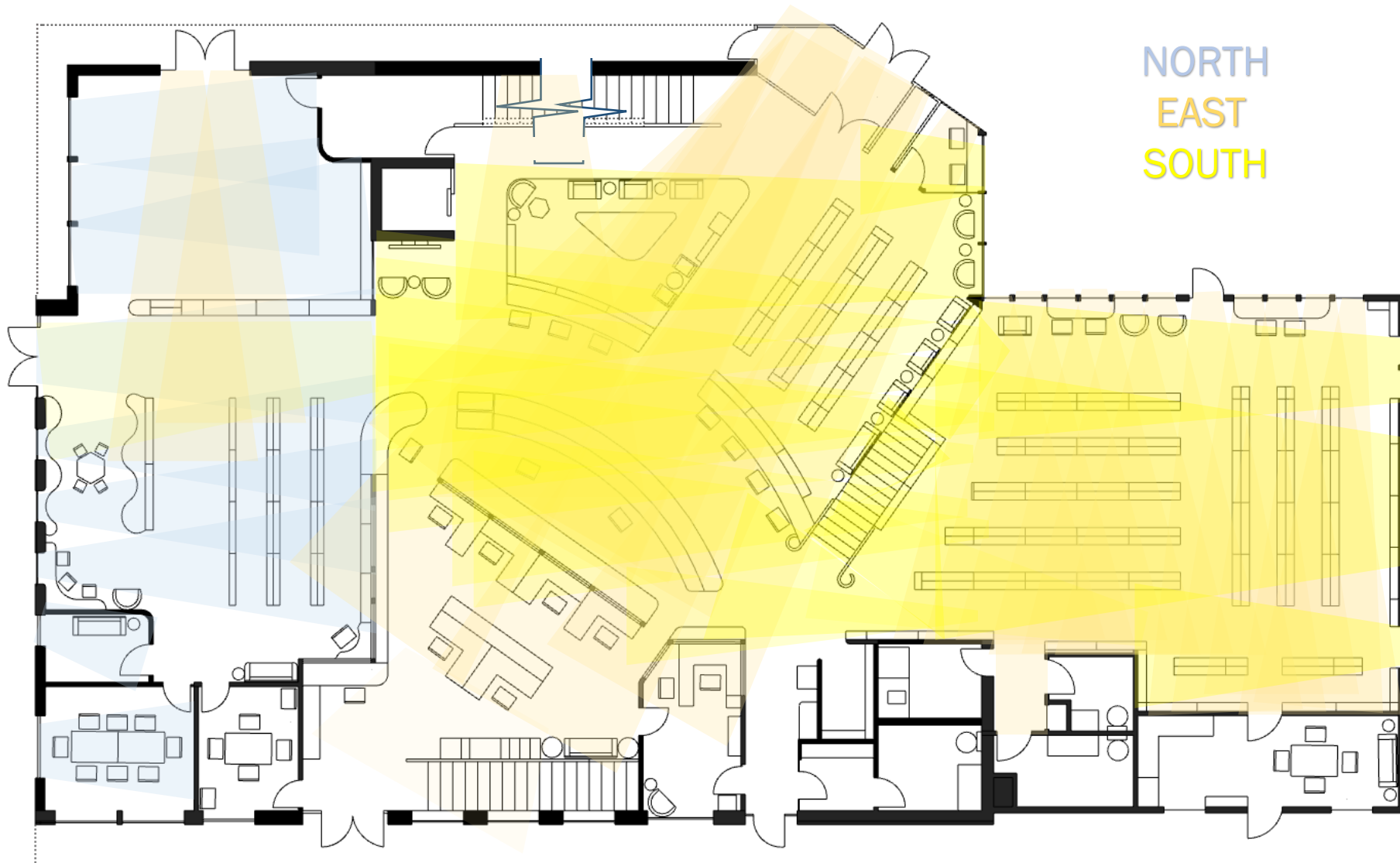
Spooner Memorial Library | Schematic Design by Marco Vincent | SEH Inc. | 2.15.2024





MAIN FLOOR PLAN - DAYLIGHTING ANALYSIS

Spooner Memorial Library | Schematic Design by Marco Vincent | SEH Inc. | 2.15.2024

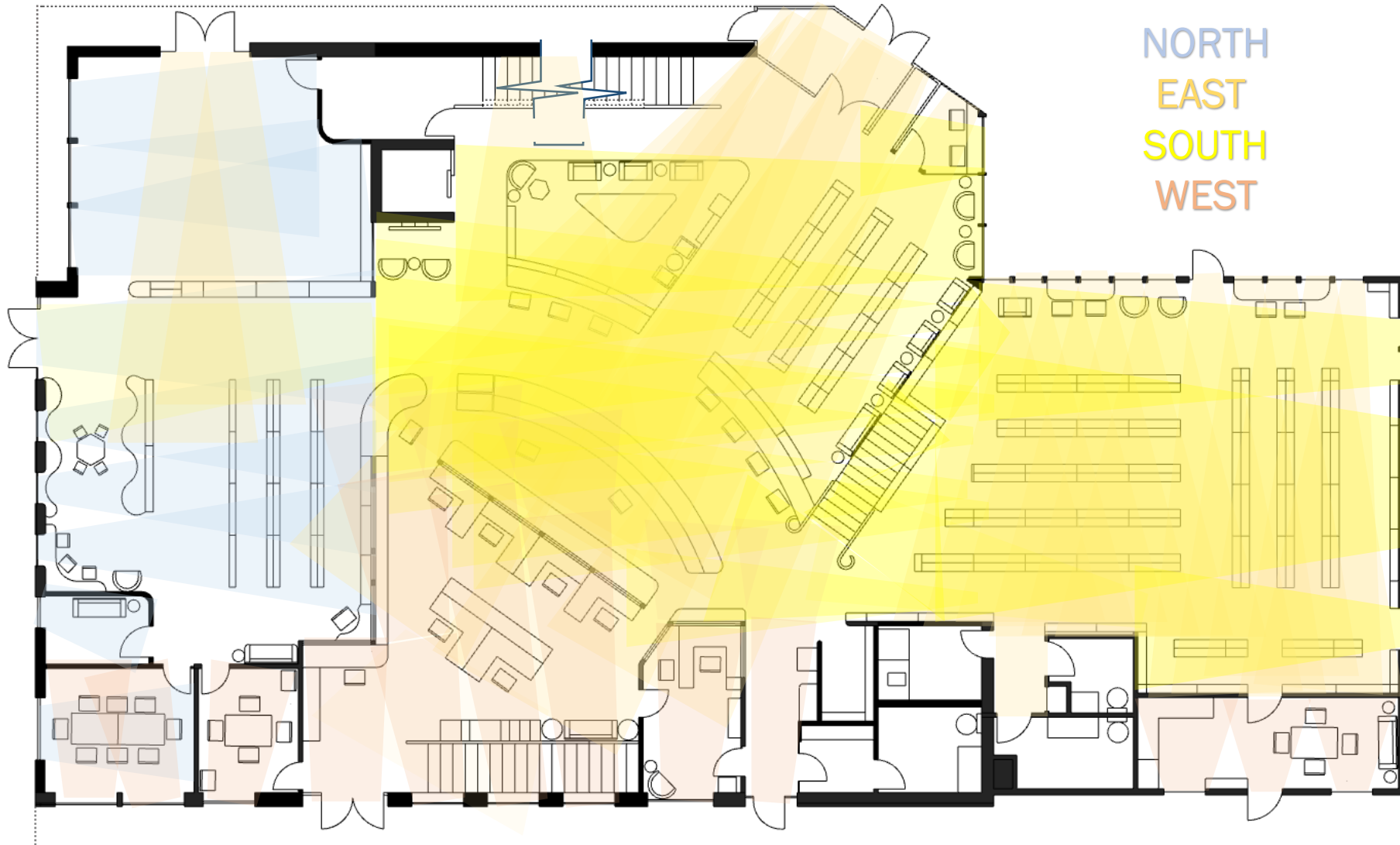


NORTH  
EAST  
SOUTH



MAIN FLOOR PLAN - DAYLIGHTING ANALYSIS

Spooner Memorial Library | Schematic Design by Marco Vincent | SEH Inc. | 2.15.2024



NORTH  
EAST  
SOUTH  
WEST



### MAIN FLOOR PLAN - DAYLIGHTING ANALYSIS

Spooner Memorial Library | Schematic Design by Marco Vincent | SEH Inc. | 2.15.2024

# 2ND LEVEL

4,770 net sf



**CHILD PROG.**  
585 sf

**ELEV.**  
64sf

OPEN TO BELOW

48sf

**STOR.**  
125sf

**TOILET**  
82sf

**JAN**

**TOILET**  
82sf

**PROGRAM & STUDY**  
1,235sf

**MAKERS**  
710sf

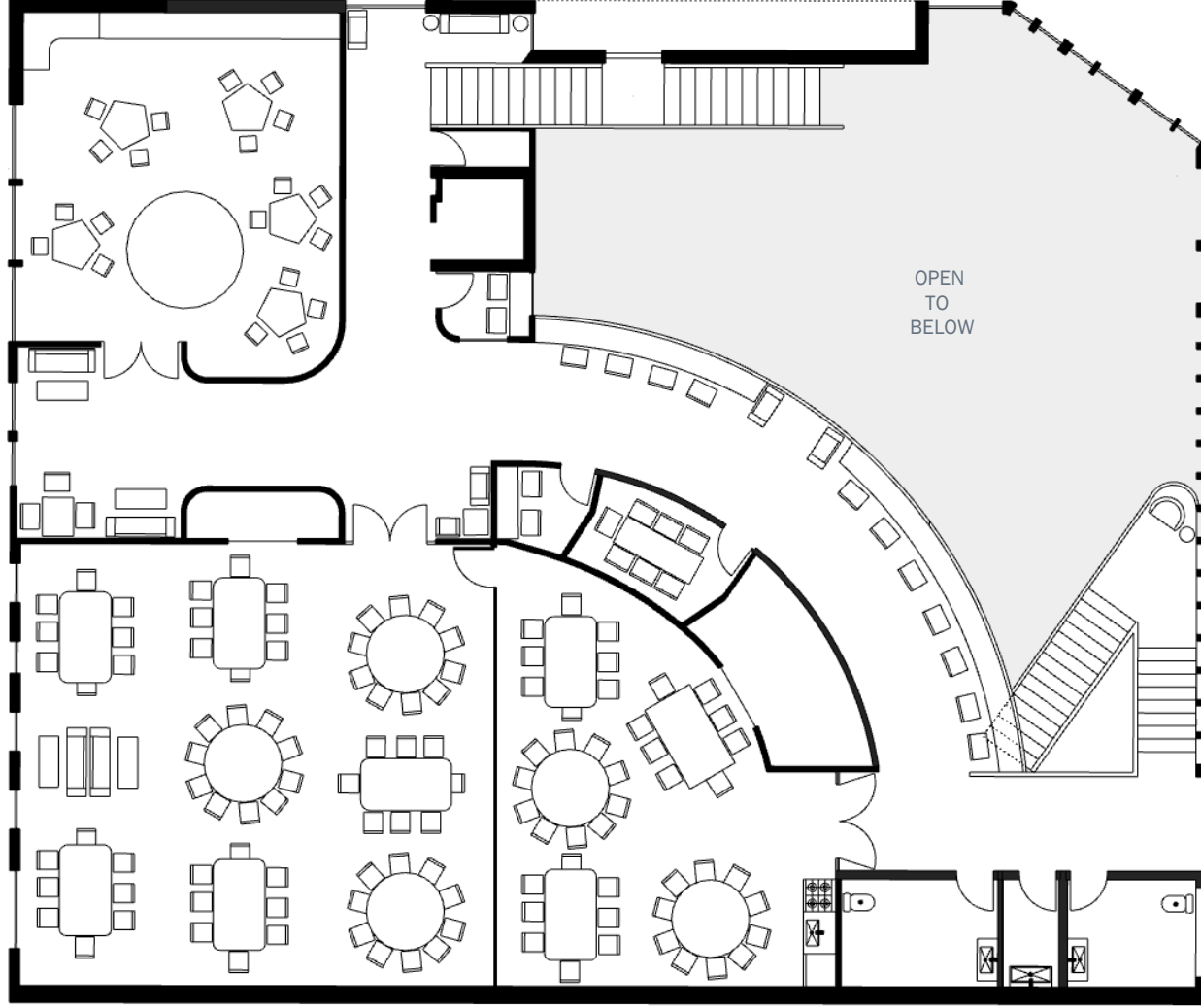
40”H LAMI. GLASS ABOVE 34”H DESK

44”H LAMI. GLASS ABOVE 38”H RAILING

38”H RAILING

SECOND FLOOR PLAN -  
FURNISHED FOR PROGRAMMING

Spooner Memorial Library | Schematic Design by Marco Vincent | SEH Inc. | 2.15.2024



## 2ND LEVEL

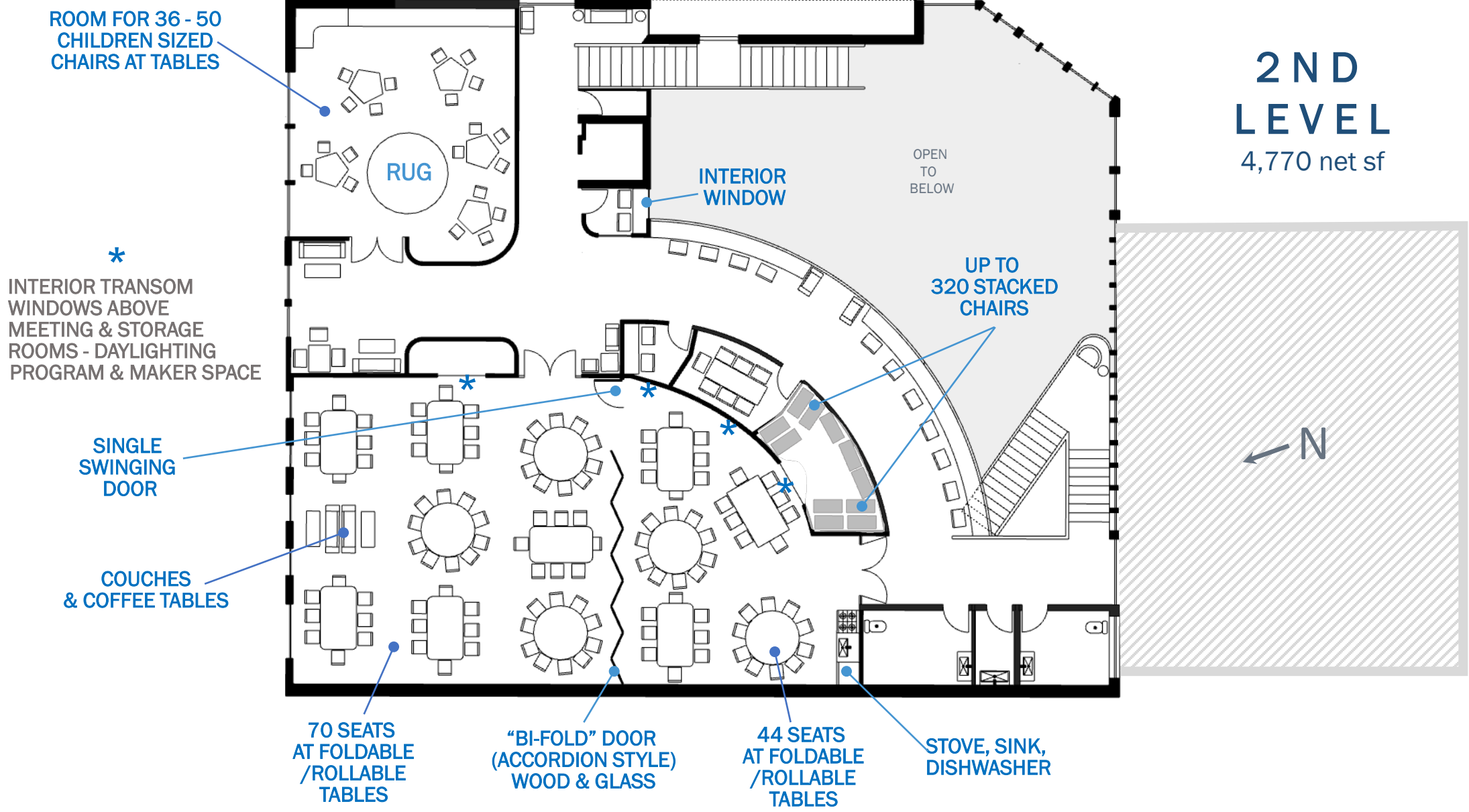
4,770 net sf



SECOND FLOOR PLAN -  
FURNISHED FOR PROGRAMMING  
Spooner Memorial Library | Schematic Design by Marco Vincent | SEH Inc. | 2.15.2024

# 2ND LEVEL

4,770 net sf

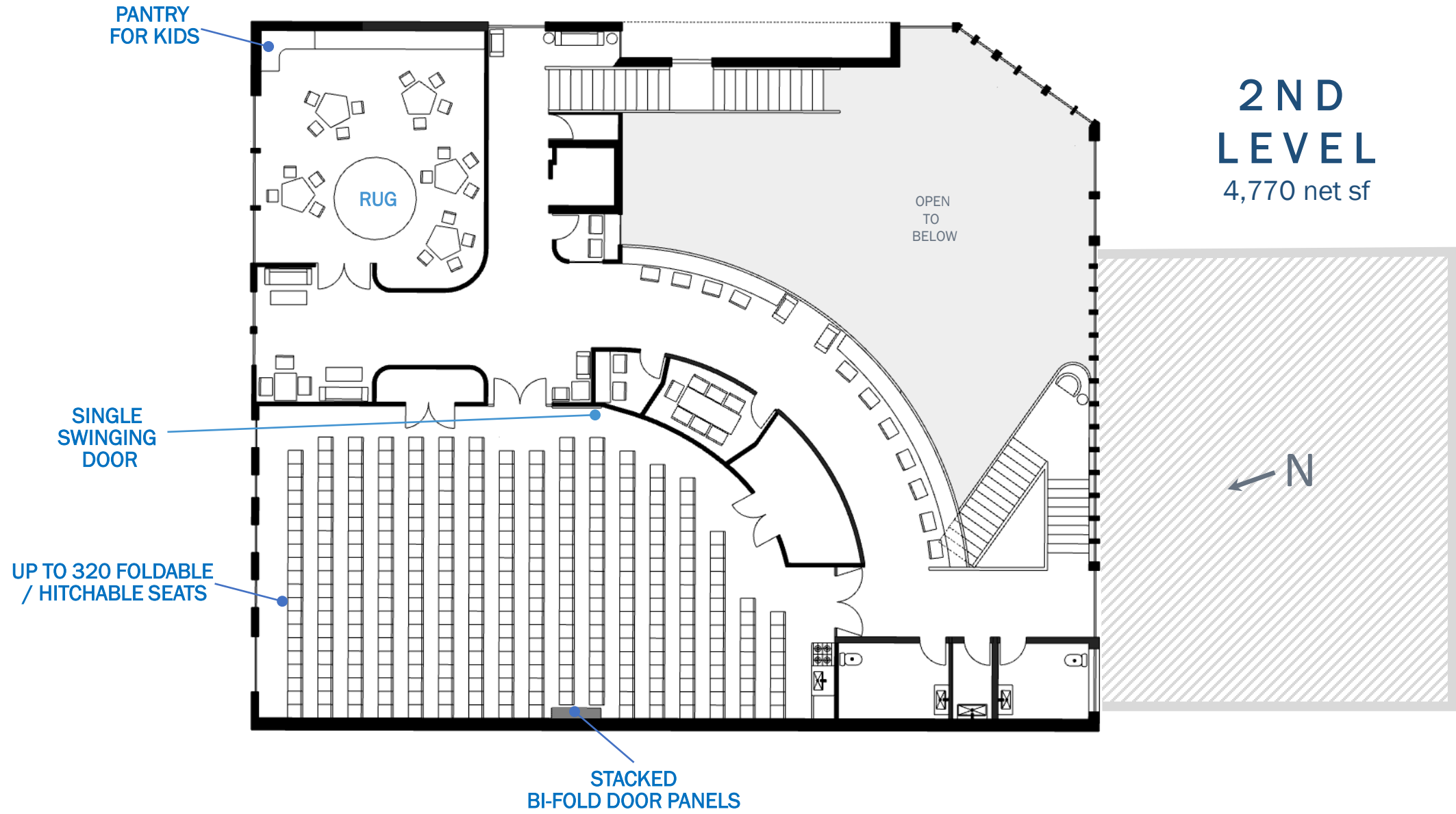


SECOND FLOOR PLAN -  
FURNISHED FOR PROGRAMMING

Spooner Memorial Library | Schematic Design by Marco Vincent | SEH Inc. | 2.15.2024

# 2ND LEVEL

4,770 net sf

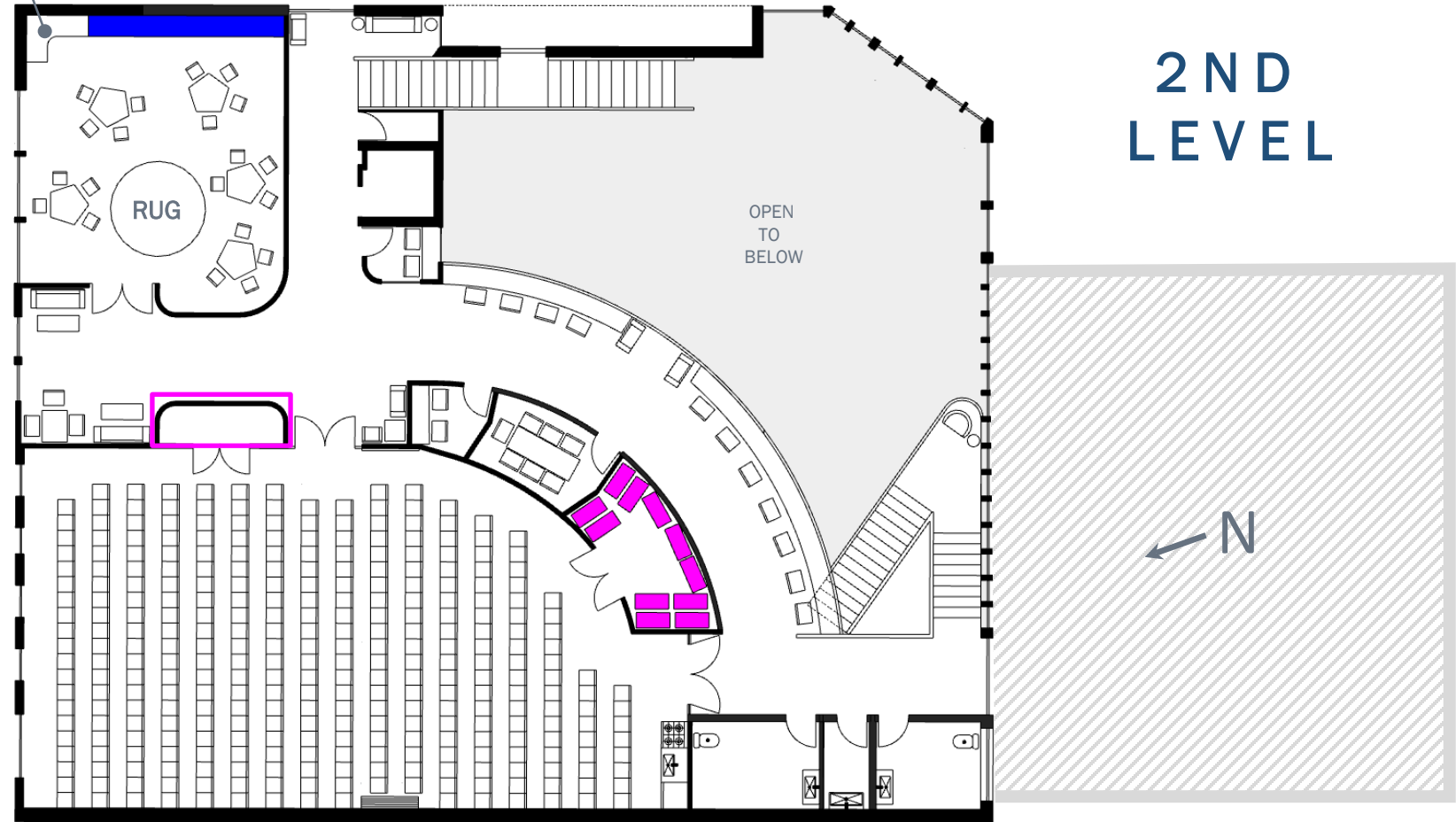


SECOND FLOOR PLAN -  
FURNISHED FOR PRESENTATIONS

Spooner Memorial Library | Schematic Design by Marco Vincent | SEH Inc. | 2.15.2024

# 2ND LEVEL

PANTRY FOR KIDS



**ADULT BOOK SHELVES:**  
 90 x (188 books per 10"x5'w five row shelf) = 16,920books

**TEEN BOOK SHELVES:**  
 29 x (114 books per 10"x3'h x 5'w three row shelf)= +-3,306 books

**CHILD BOOKS:**  
 23 (9" x 2.5'h x 5'w) picture  
 +4 (12"x 2.5'h x 5'w) board  
 +3 (12" x 2.5'h x 5'w) easy  
 +2 (12" x 2.5'h x 5'w) display

**AUDIO SHELVES**  
 4 x (5' w x 6' h) = 2,420 >  
 > 1,475 audiobooks

**PUZZLE PLACE:**  
 4 x (10" x 3'h x 5'w shelf) = > volume needed

**ART WALLS / SHELVES:**  
 77square or cubic feet: stair  
 40square feet: child area

**DVD SHELVES**  
 5 (5'w x 6'h) + 2 (5'w x 2.5'h) =3,631 DVDs

**TALL STAFF STORAGE:**  
 +400 cubic feet  
 (6'h x 67sf)

**LOW STAFF STORAGE:**  
 +510 cubic feet  
 (2.5' or 3'h) x 204sf)

**BOOK NOOK:**  
 3 x (10"x5' four or five row shelves) = +400 books

11x 6-FT-HIGH STACKS = 320 FOLDED CHAIRS  
 SWAPPED AS NEEDED WITH 13 FOLDABLE & ROLLABLE TABLES (BTWN. 2 STORAGE ROOMS)



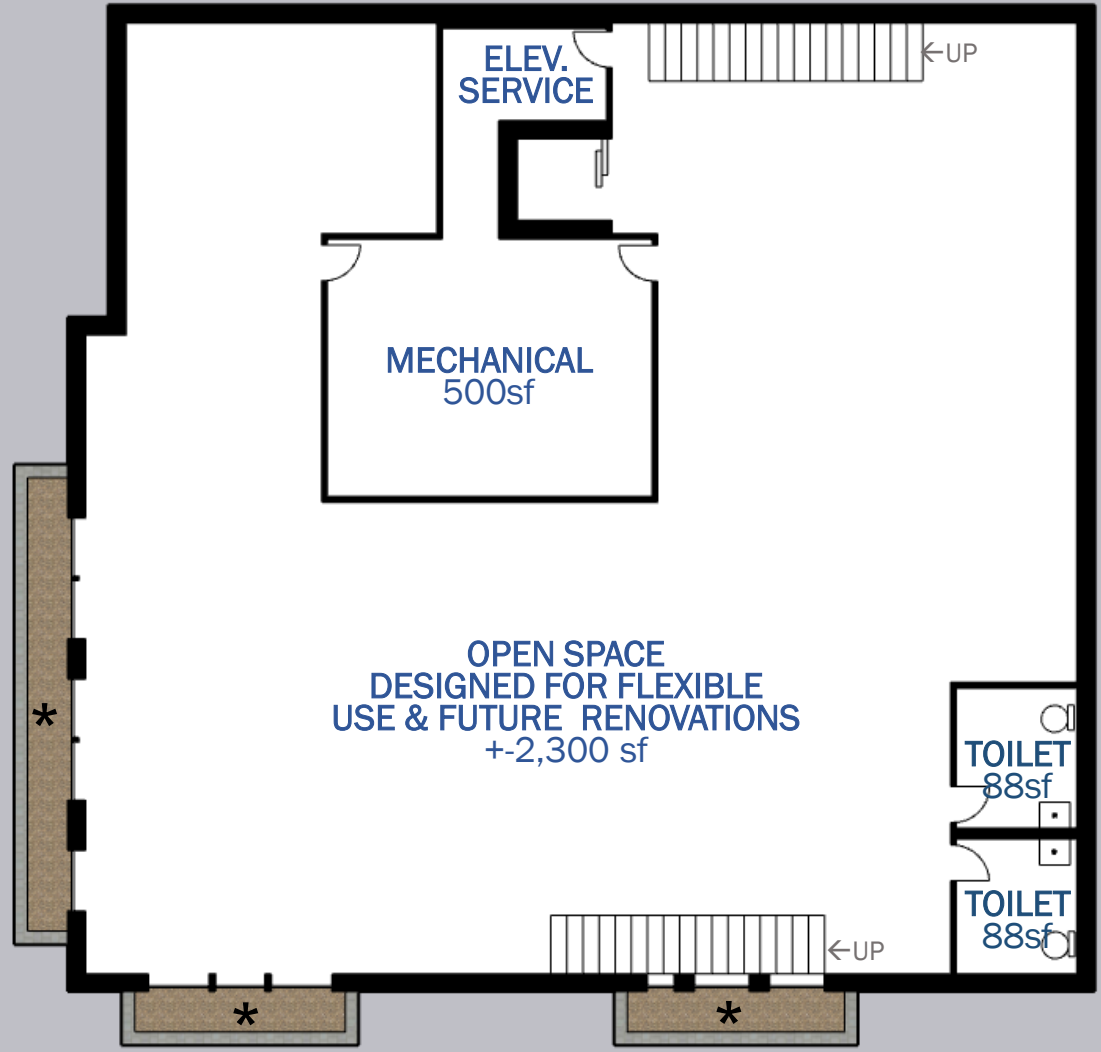


**SEATING**  
COZY  
DESK  
MEET

70 SEATS  
AT FOLDABLE  
/ROLLABLE  
TABLES

44 SEATS  
AT FOLDABLE  
/ROLLABLE  
TABLES





## BASEMENT

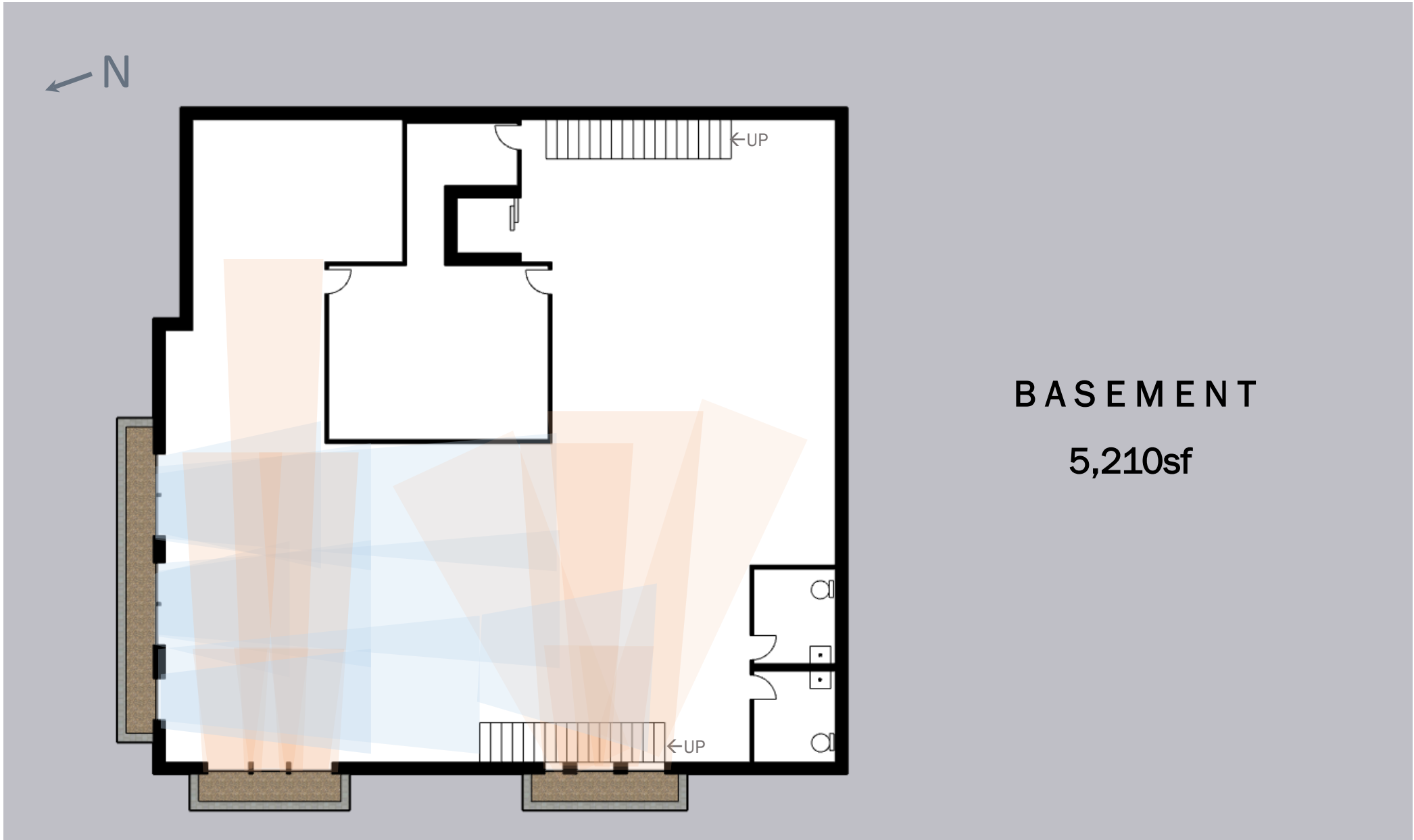
5,210sf

MECHANICAL ROOM IDEAL ALONG ELEVATOR TO HIDE DUCTWORK. PRECISE MECH. RM. SIZE TBD IN MEP & DESIGN DEVELOPMENT PHASE

MECHANICAL ROOM IDEAL ALONG ELEVATOR TO HIDE DUCTWORK. PRECISE MECH. RM. SIZE TBD IN MEP & DESIGN DEVELOPMENT PHASE

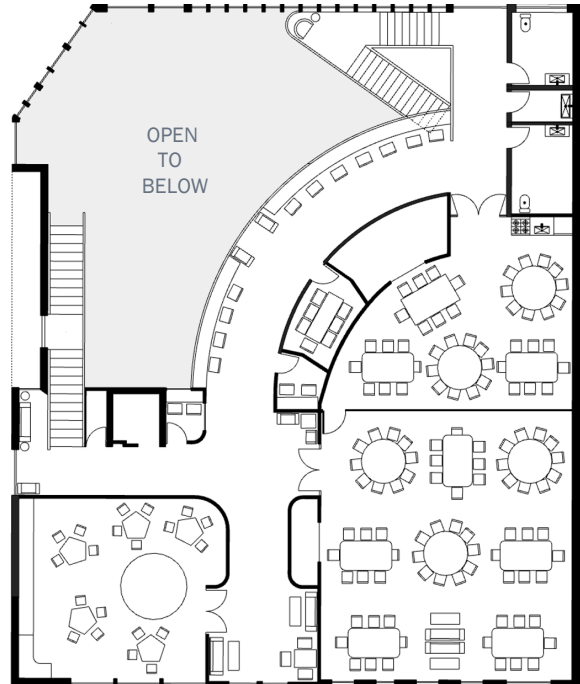
BATHROOM PLUMBING TO BE ROUGHED-IN AT MINIMUM OR FULLY FINISHED DURING CONSTRUCTION (TBD)

\* WINDOW WELL DEPTH EQUAL OR LESS THAN 32" BELOW GRADE : THE DEPTH REQ'D BY CODE



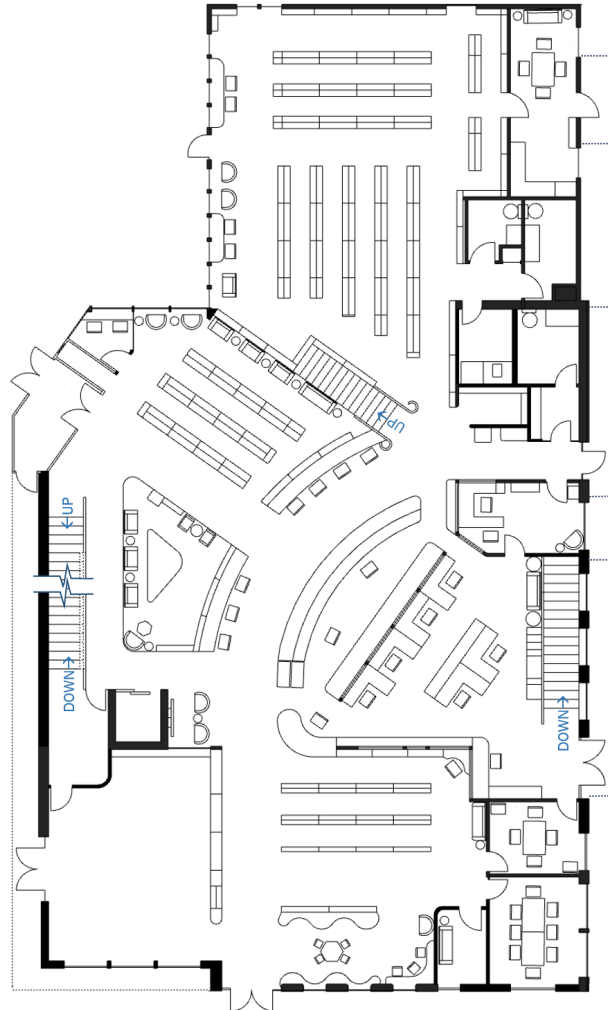
# BASEMENT

5,210sf



**2ND  
LEVEL**

4,770 net sf



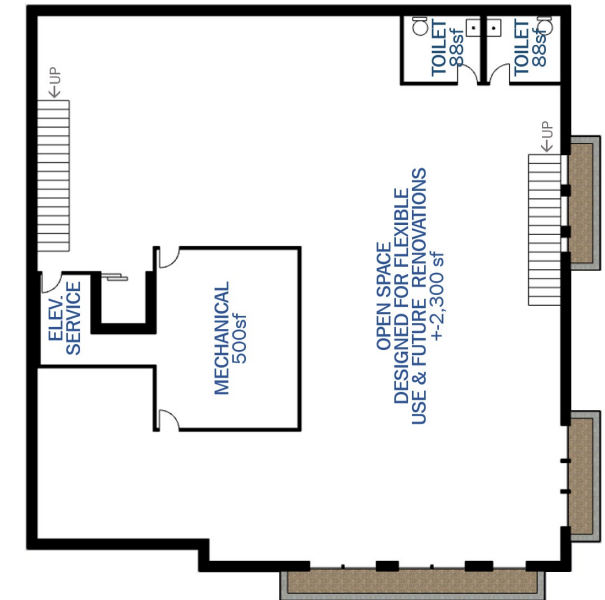
**MAIN  
LEVEL**

8,473 net sf



**ALL FLOOR PLANS**

Spooer Memorial Library | Schematic Design  
Marco Vincent | SEH Inc. | 2.15.2024



**BASEMENT**

5,210 net sf

**+18,500 TOTAL SQUARE FOOTAGE**

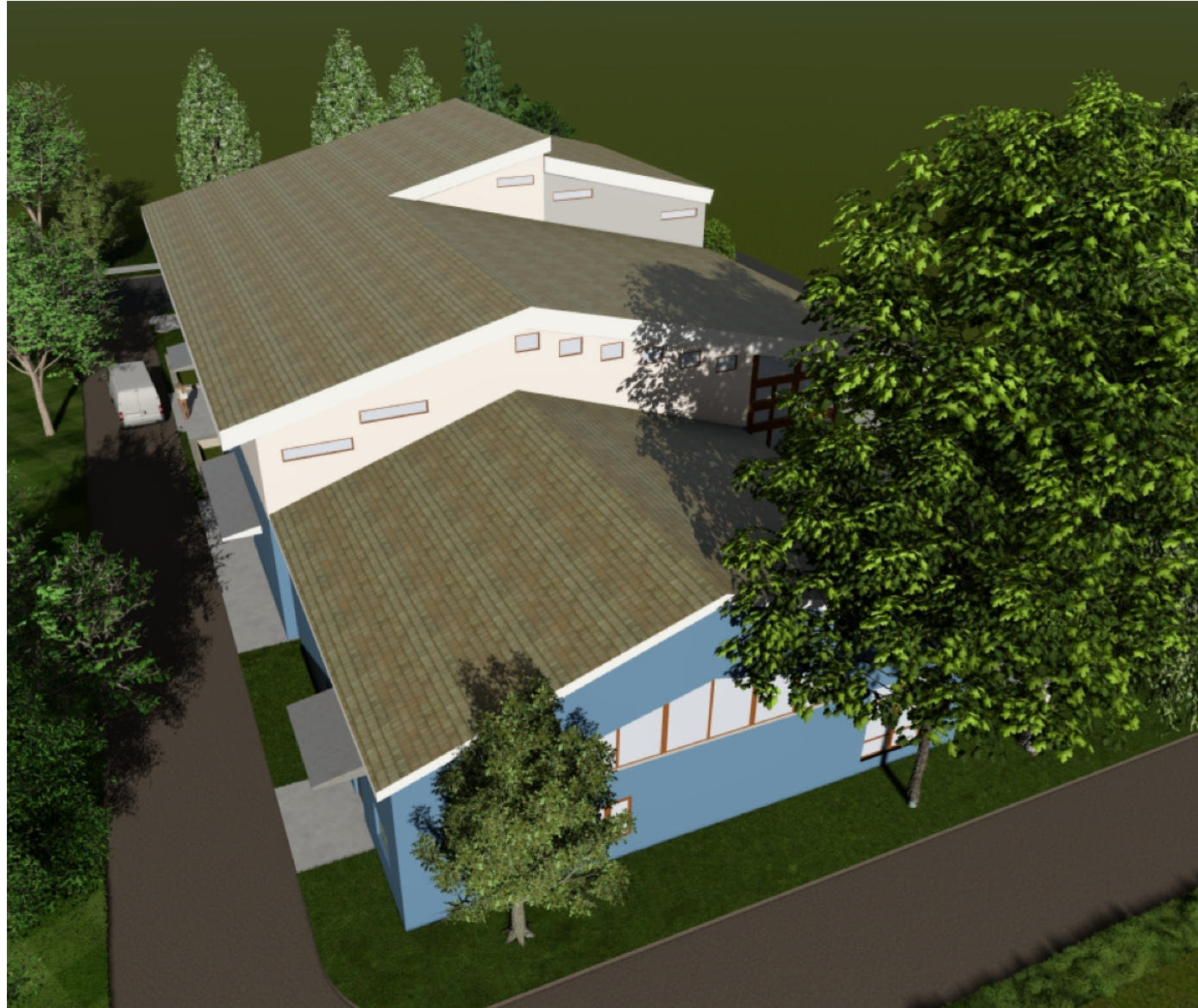


## NORTH ELEVATION

Spooner Memorial Library | Schematic Design by Marco Vincent | SEH Inc. | 2.15.2024



## EAST ELEVATION



## SOUTH ELEVATION

Spooner Memorial Library | Schematic Design by Marco Vincent | SEH Inc. | 2.15.2024



## WEST ELEVATION

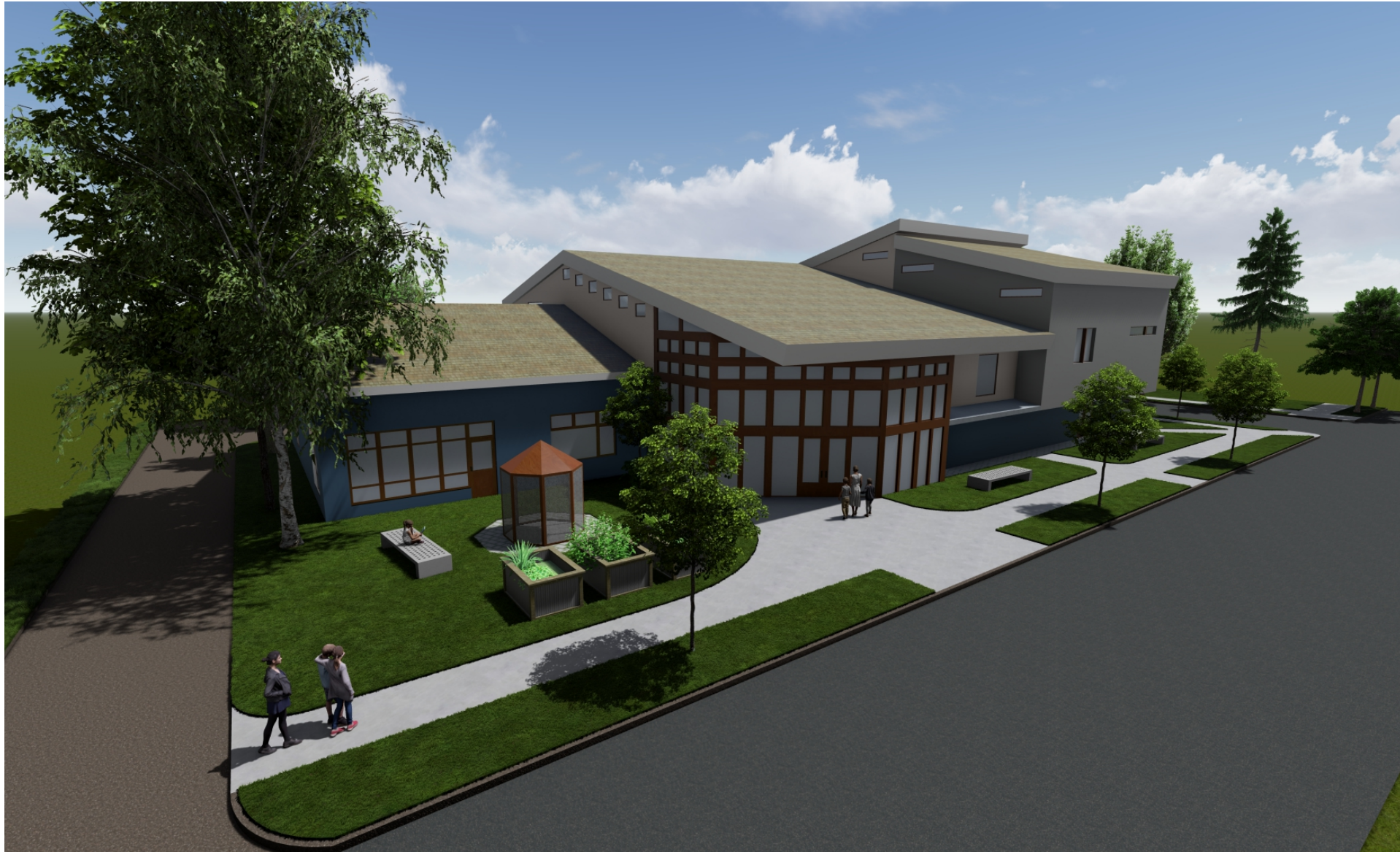
Spooner Memorial Library | Schematic Design by Marco Vincent | SEH Inc. | 2.15.2024

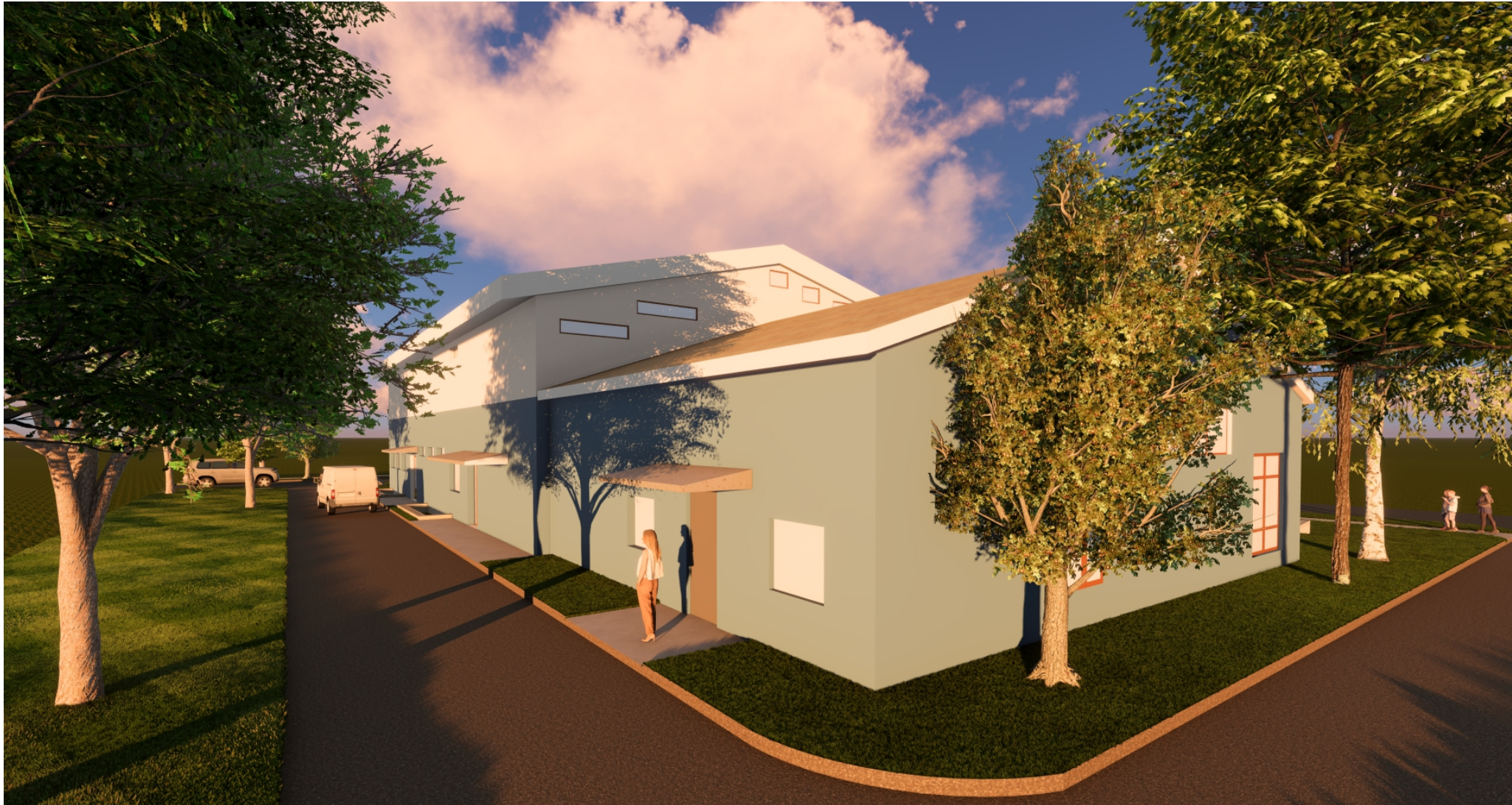




3D R E N D E R I N G | S K E T C H U P & G O O G L E E A R T H

Spooner Memorial Library | Schematic Design by Marco Vincent | SEH Inc. | 2.15.2024





3D RENDERING | SKETCHUP & GOOGLE EARTH

Spooner Memorial Library | Schematic Design by Marco Vincent | SEH Inc. | 2.15.2024

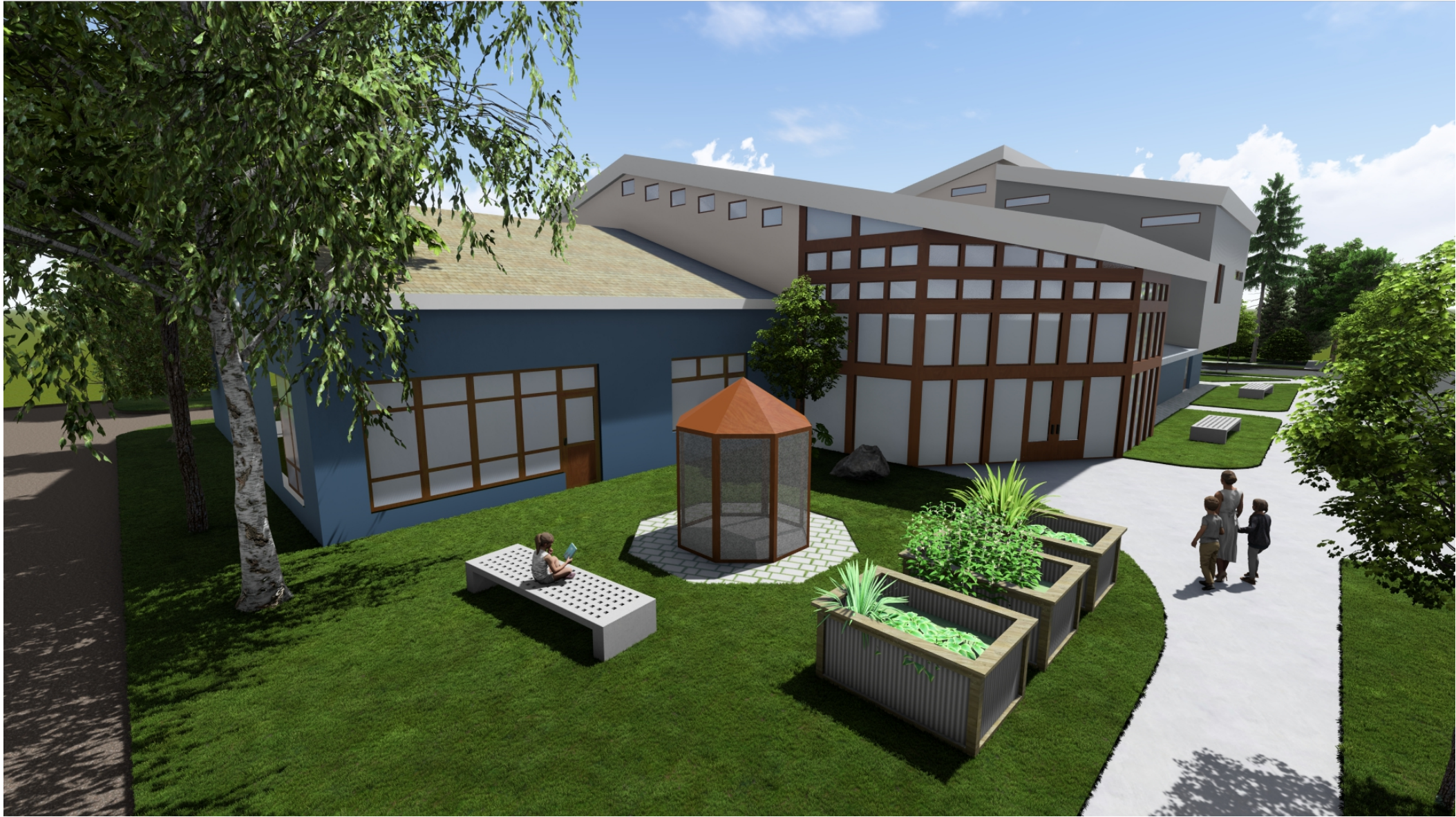




3D R E N D E R I N G | S K E T C H U P & G O O G L E E A R T H

Spooner Memorial Library | Schematic Design by Marco Vincent | SEH Inc. | 2.15.2024





3D R E N D E R I N G | S K E T C H U P & G O O G L E E A R T H

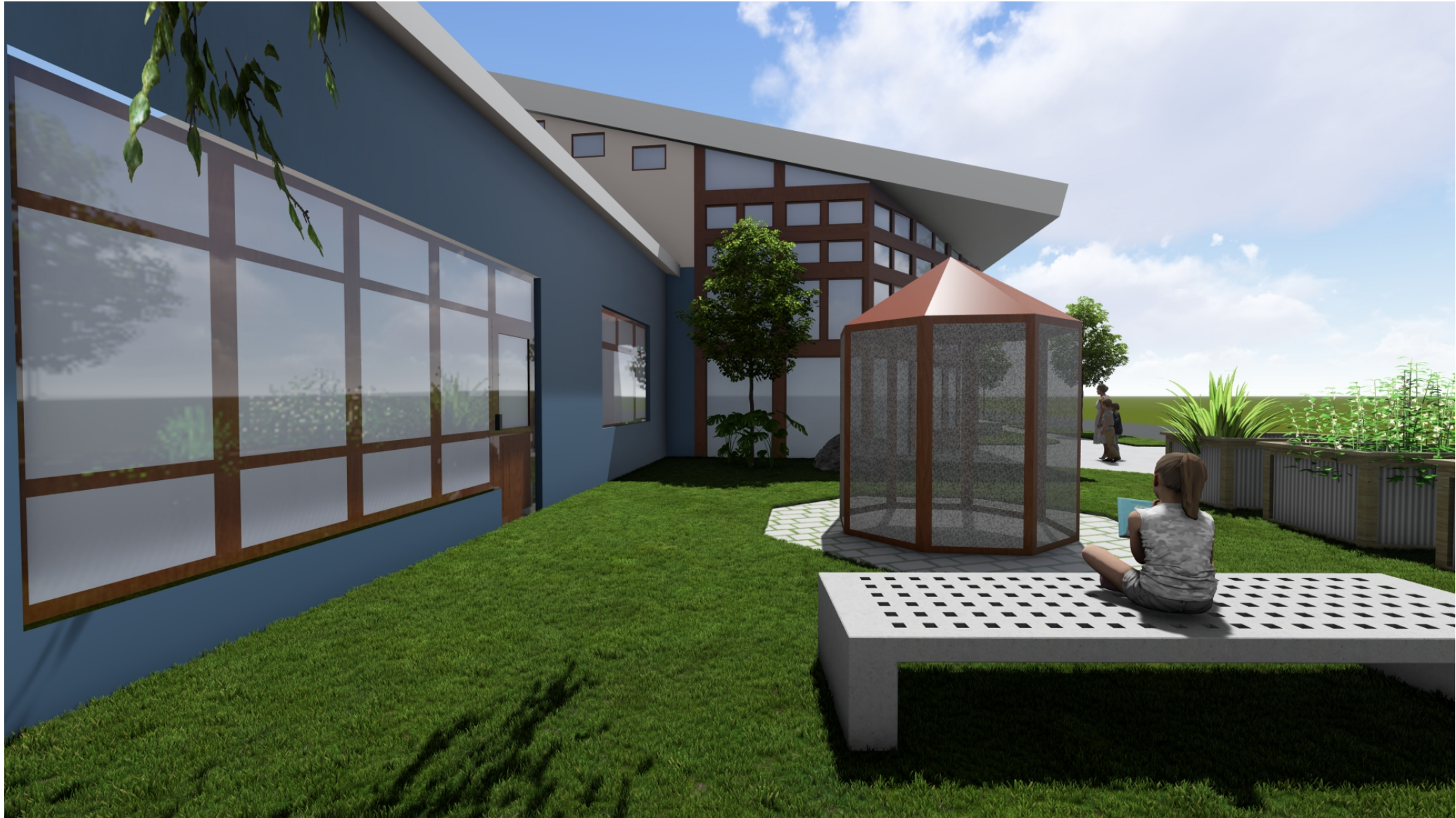
Spooner Memorial Library | Schematic Design by Marco Vincent | SEH Inc. | 2.15.2024

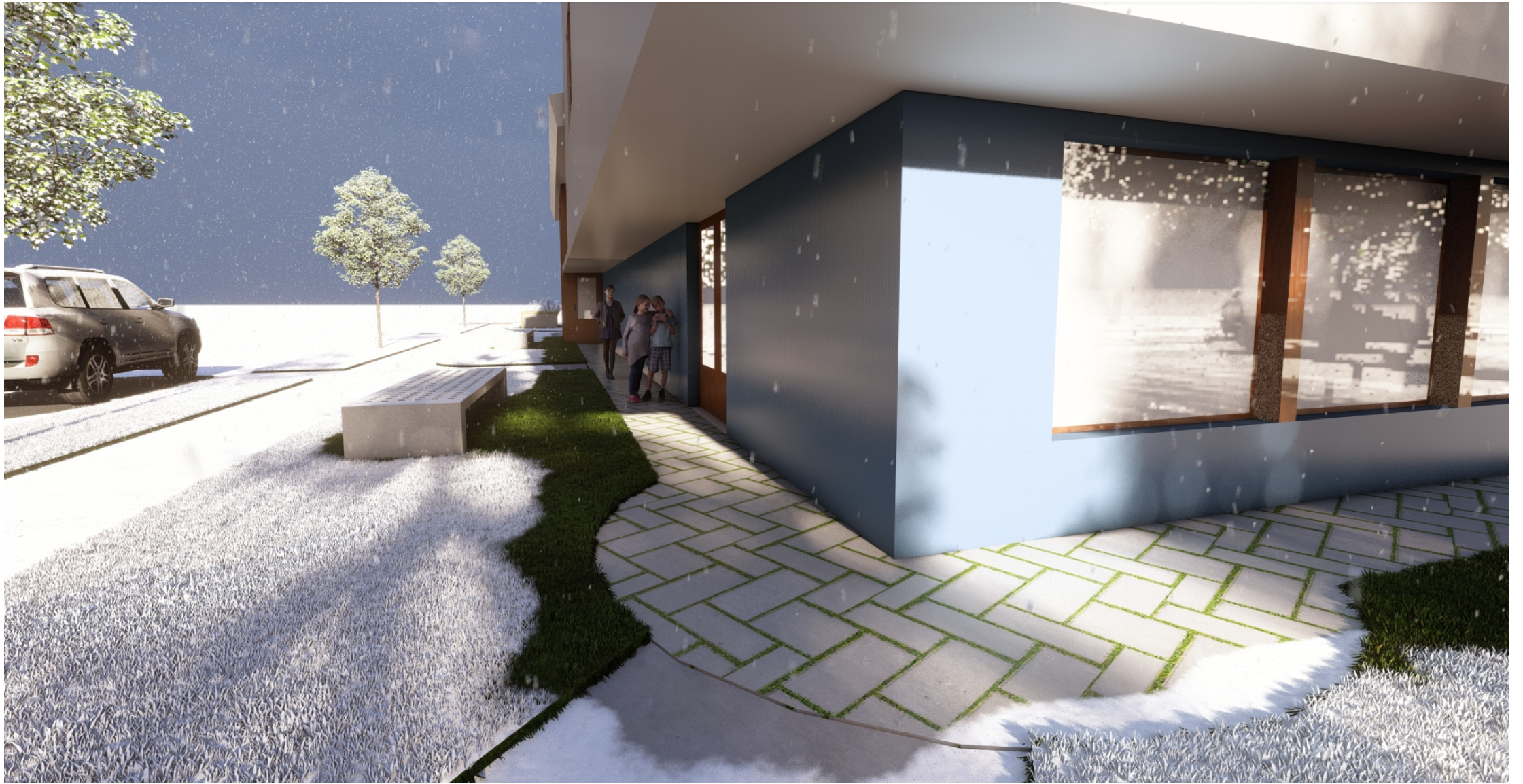


3D R E N D E R I N G | S K E T C H U P & G O O G L E E A R T H

Spooner Memorial Library | Schematic Design by Marco Vincent | SEH Inc. | 2.15.2024









3D R E N D E R I N G | S K E T C H U P & G O O G L E E A R T H

Spooner Memorial Library | Schematic Design by Marco Vincent | SEH Inc. | 2.15.2024



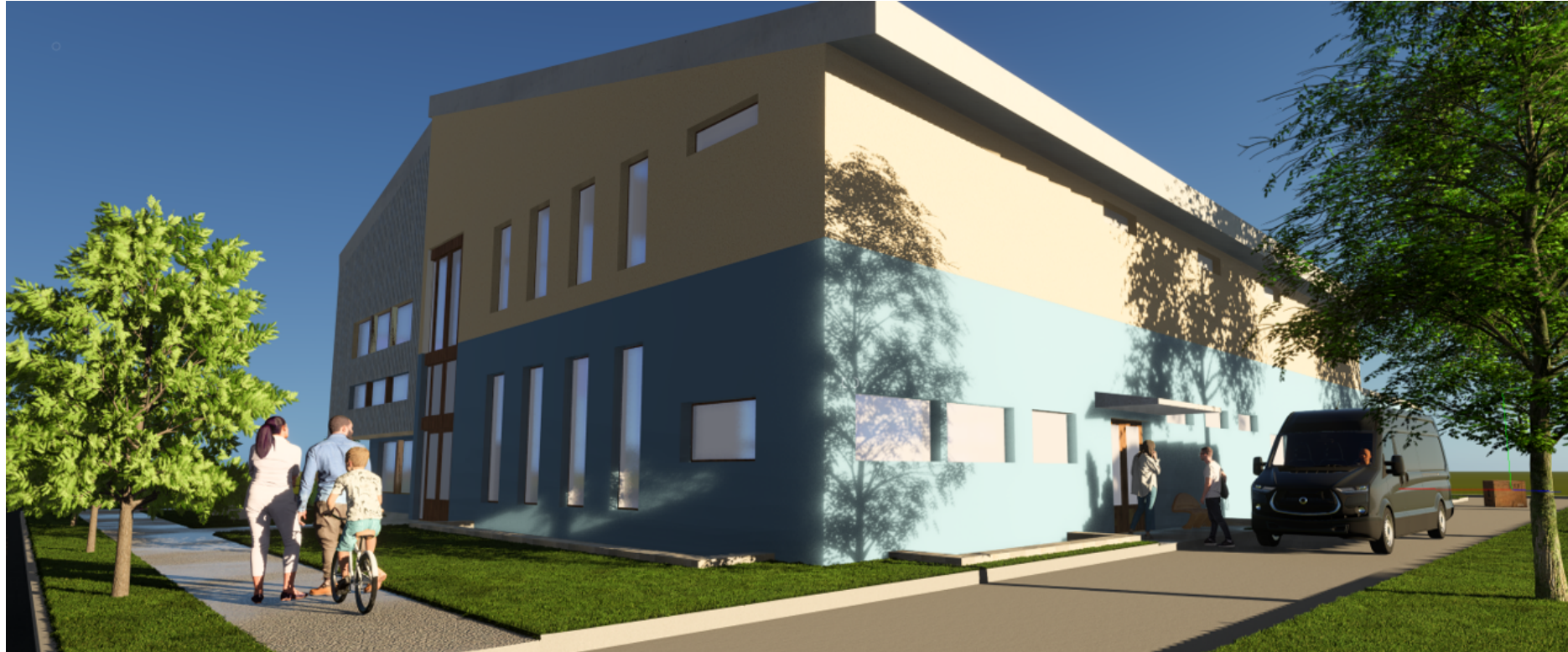
EXTERIOR FINISHES  
AND LANDSCAPING TBD

# SPOONER MEMORIAL LIBRARY

## SCHEMATIC DESIGN DRAWING SET - 4 MAY 2024



Building a Better World  
for All of Us®



OWNER'S REPRESENTATIVE  
**ANGIE BODZISLAW** | Director of Library  
[director@spoonerlibrary.org](mailto:director@spoonerlibrary.org) | 715-635-2792

DESIGN LEAD / CLIENT LIASON:  
**MARCO VINCENT** Assoc.AIA, LEED AP, WELL AP, CDT, phius CPHC  
[mvincent@sehinc.com](mailto:mvincent@sehinc.com) | 651-336-8885

PRINCIPAL / PROJECT MNGR:  
**BRIAN BERGSTROM** AIA, NCARB, LEED AP BD+C  
[bbergstrom@sehinc.com](mailto:bbergstrom@sehinc.com) | 952-215-8118