

SPOONER MEMORIAL LIBRARY

SCHEMATIC DESIGN DRAWING SET - 15 FEBRUARY 2024



Building a Better World
for All of Us®



LEAD DESIGNER / CLIENT LIASON:

MARCO VINCENT Assoc. AIA, LEED AP, WELL AP, CDT, phius CPHC
mvincent@sehinc.com | 651-336-8885

PRINCIPAL ARCHITECT / PROJECT MNGR:

BRIAN BERGSTROM AIA, NCARB, LEED AP BD+C
bbergstrom@sehinc.com | 952-215-8118

OWNER'S REPRESENTATIVE

ANGIE BODZISLAW | Director of Library
director@spoonerlibrary.org | 715-635-2792

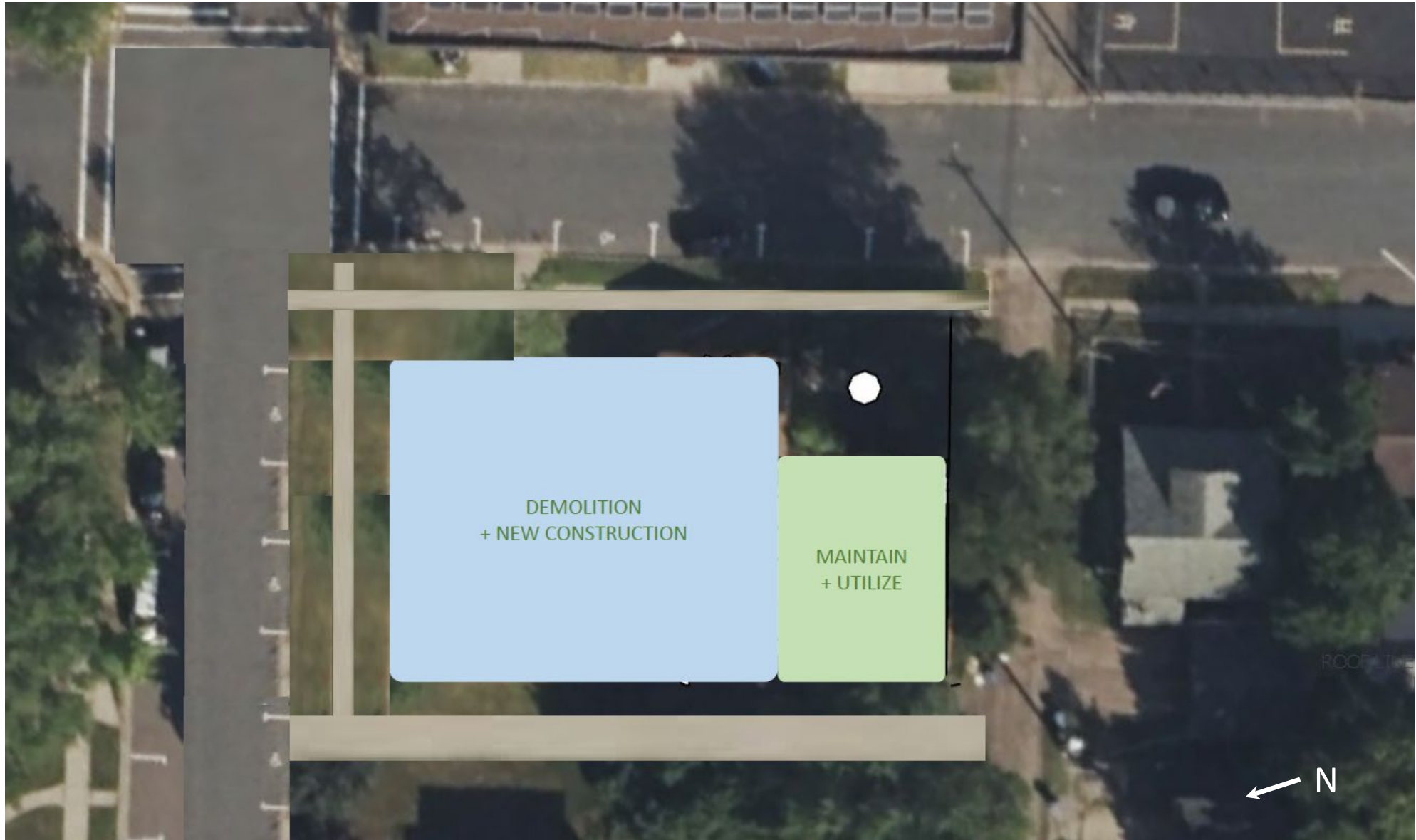
SPOONER MEMORIAL LIBRARY

SCHEMATIC DESIGN DRAWING SET - 15 FEBRUARY 2024

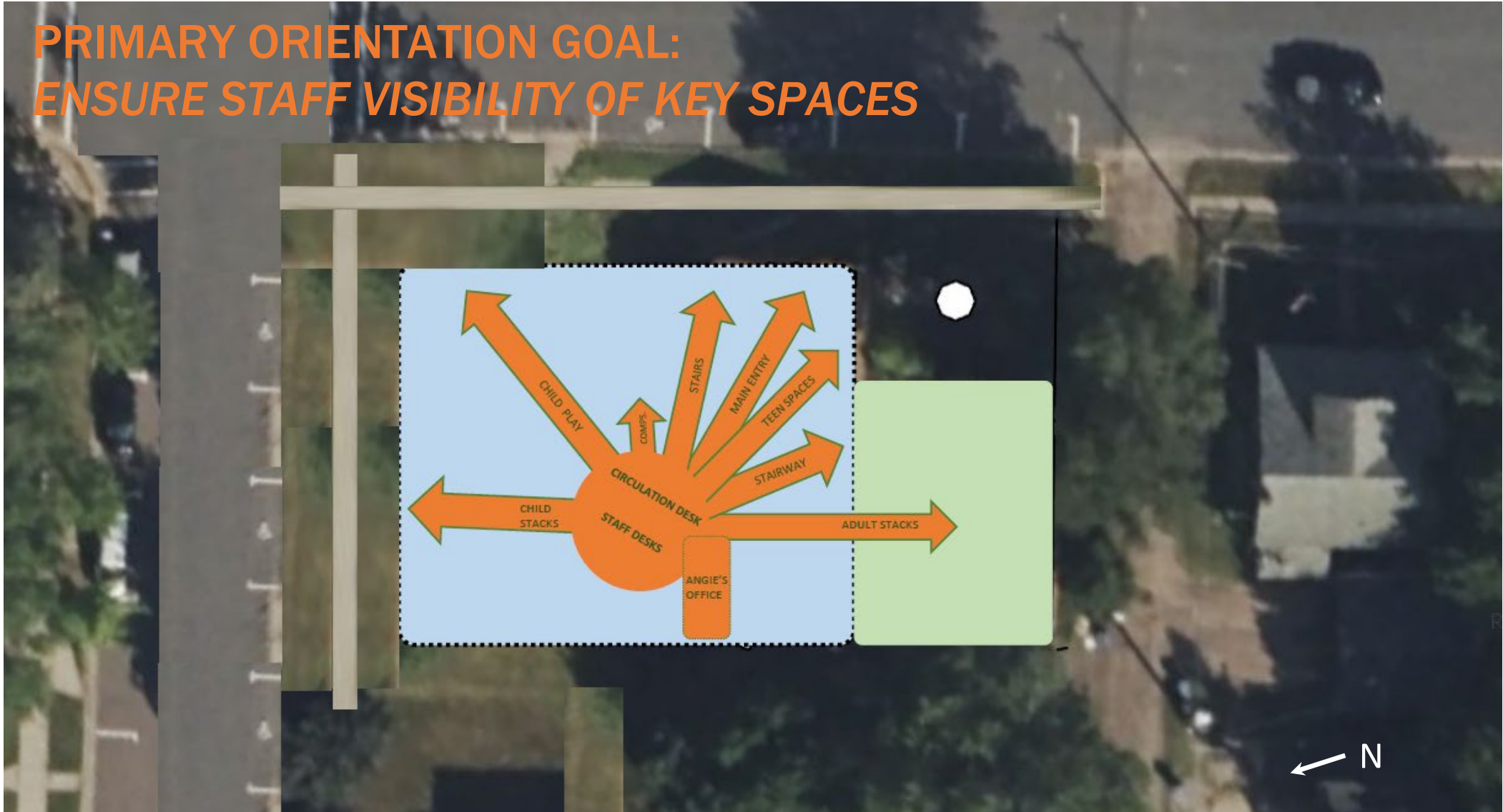


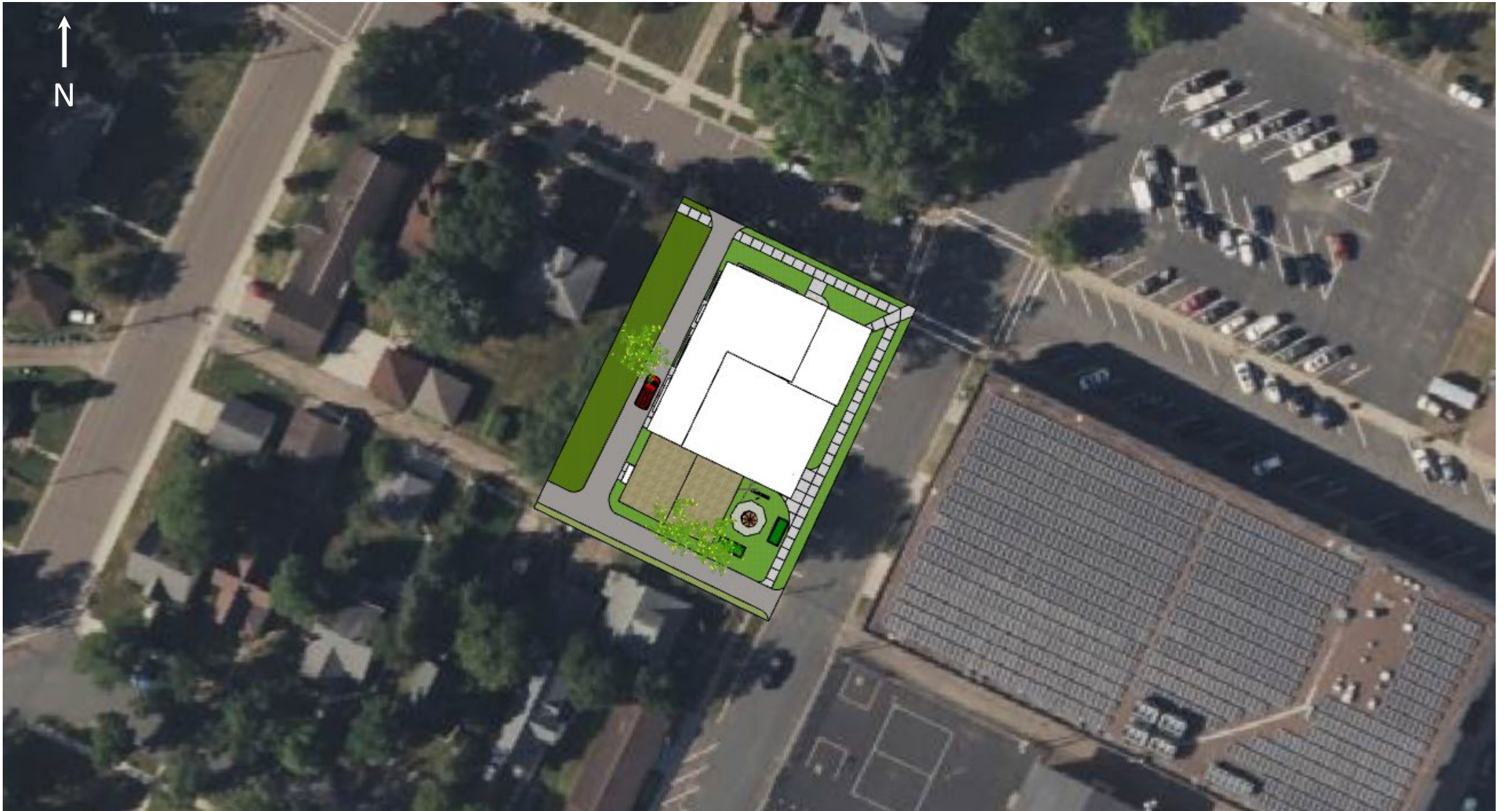
Building a Better World
for All of Us®

1. COVER
2. CONTENTS
3. DEMOLITION CONCEPT
4. PROGRAMMATIC ORIENTATION
5. SITE PLAN -SCHEMATIC-A
6. SITE PLAN -SCHEMATIC - B
7. MAIN FLOOR - UNFURNISHED
8. MAIN FLOOR - VISIBILITY CONCEPT
9. MAIN FLOOR - SHELVES, DESKS, ETC.
10. MAIN FLOOR - FULLY FURNISHED
11. MAIN FLOOR - SHELF FUNCTION
12. MAIN FLOOR - OTHER SERVICES
13. MAIN FLOOR - SEATING ANALYSIS
14. MAIN FLOOR - INTERIOR WINDOWS
15. MAIN FLOOR - VISIBILITY DIAGRAM
16. MAIN FLOOR - DAYLIGHTING (F/ NORTH)
17. MAIN FLOOR - DAYLIGHTING (FROM N+E)
18. MAIN FLOOR - DAYLIGHTING (N+E+S)
19. MAIN FLOOR - DAYLIGHTING (N+E+S+W)
20. 2ND FLOOR PLAN - FURNISHED: PROGRM
21. 2ND FLOOR PLAN - FURNISHED: PROGRM
22. 2ND FLOOR PLAN - FURNISHED: PROGRM
23. 2ND FLOOR PLAN - FURNISHED: PRESNT.
24. 2ND FLOOR PLAN - SHELF FUNCTION
25. 2ND FLOOR PLAN - SEATING ANALYSIS
26. BASEMENT FLOOR PLAN
27. BASEMENT - DAYLIGHTING (FROM N & W)
28. ALL FLOOR PLANS
29. ELEVATION - NORTH
30. ELEVATION - EAST
31. ELEVATION - SOUTH
32. ELEVATION - WEST
33. 3D VIEW - (FROM SKETCHUP)
34. 3D VIEW - (FROM SKETCHUP)
35. 3D VIEW - (FROM SKETCHUP)
36. 3D VIEW - (FROM SKETCHUP)
37. 3D VIEW - (FROM SKETCHUP)
38. 3D VIEW - (FROM SKETCHUP)
39. 3D VIEW - (FROM SKETCHUP)
40. 3D VIEW - (FROM SKETCHUP)
41. 3D VIEW - (FROM SKETCHUP)
42. 3D VIEW - (FROM SKETCHUP)
43. 3D VIEW - (FROM SKETCHUP)
44. 3D VIEW - (FROM SKETCHUP)



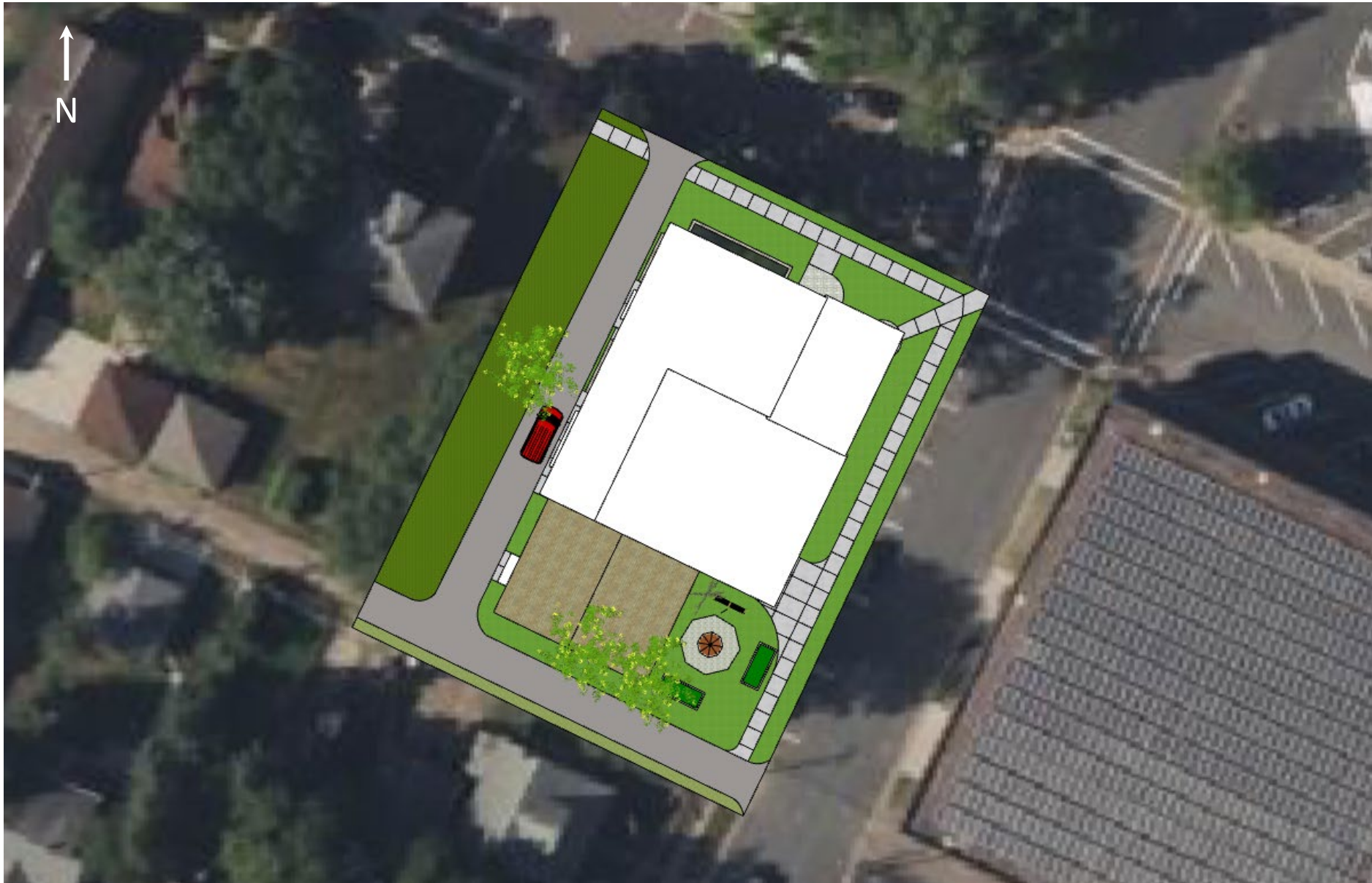
PRIMARY ORIENTATION GOAL: ENSURE STAFF VISIBILITY OF KEY SPACES





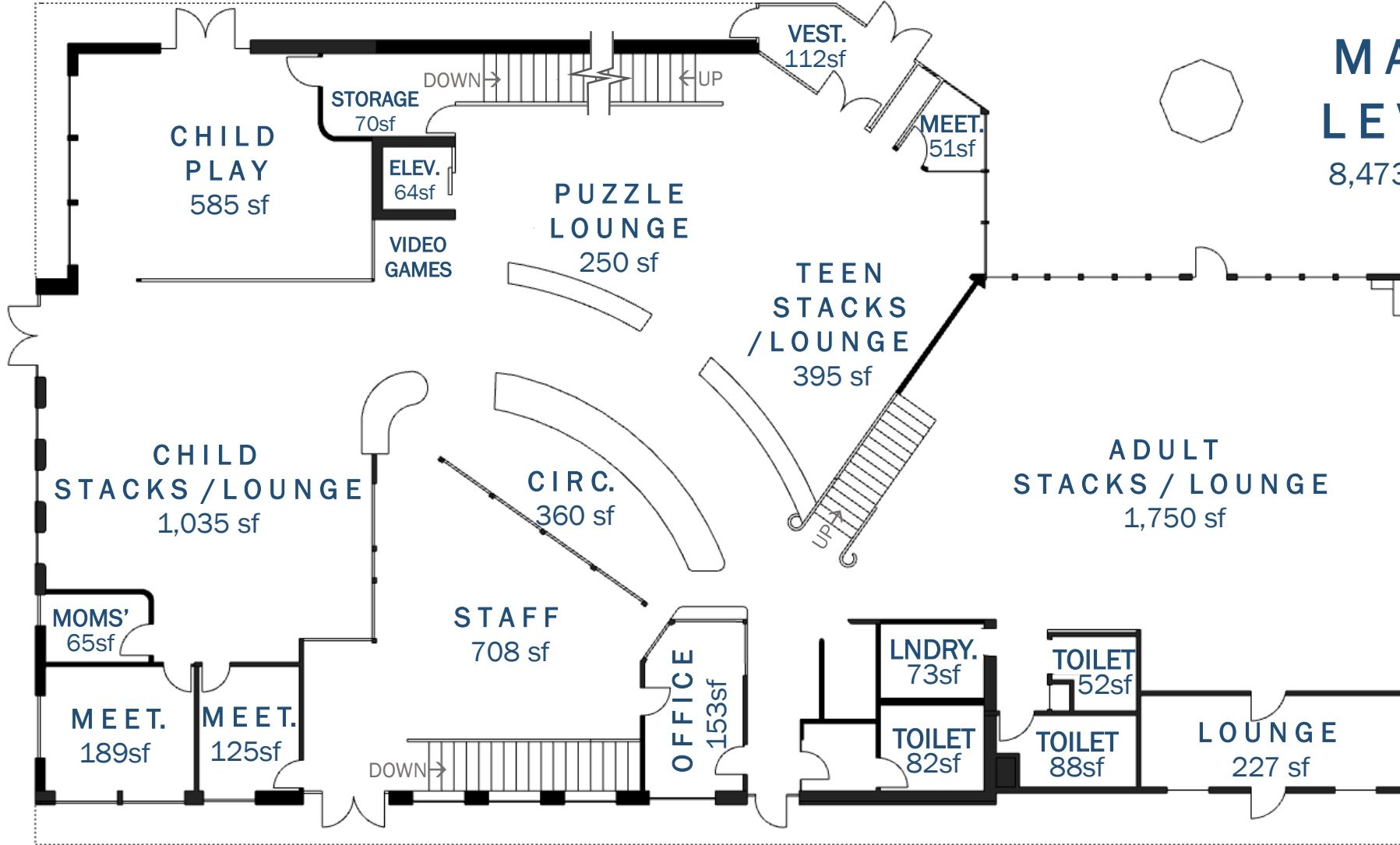
SITE PLAN - SCHEMATIC

Spooner Memorial Library | Schematic Design by Marco Vincent | SEH Inc. | 2.15.2024



SITE PLAN -SCHEMATIC



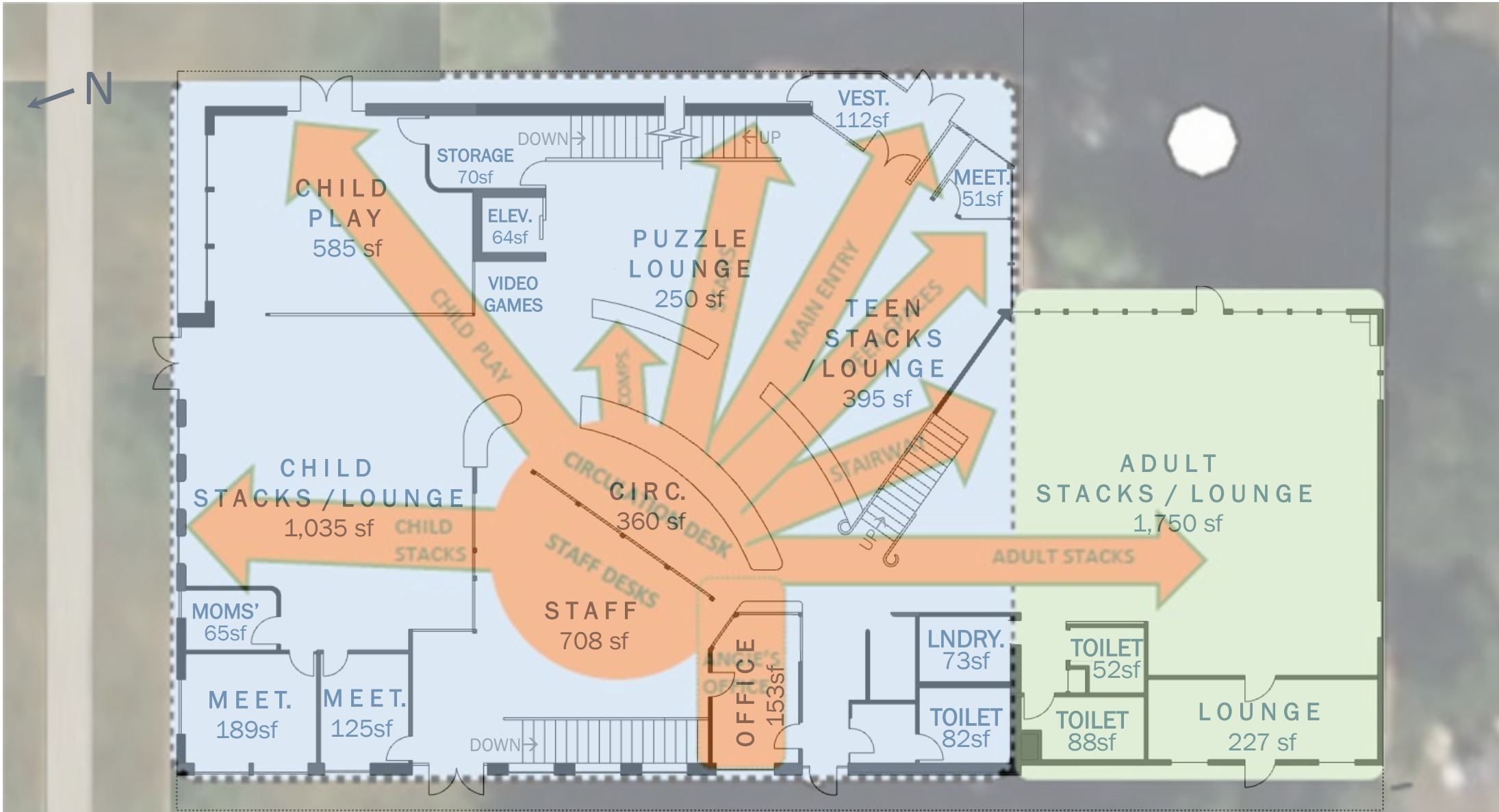


MAIN LEVEL
8,473 sf



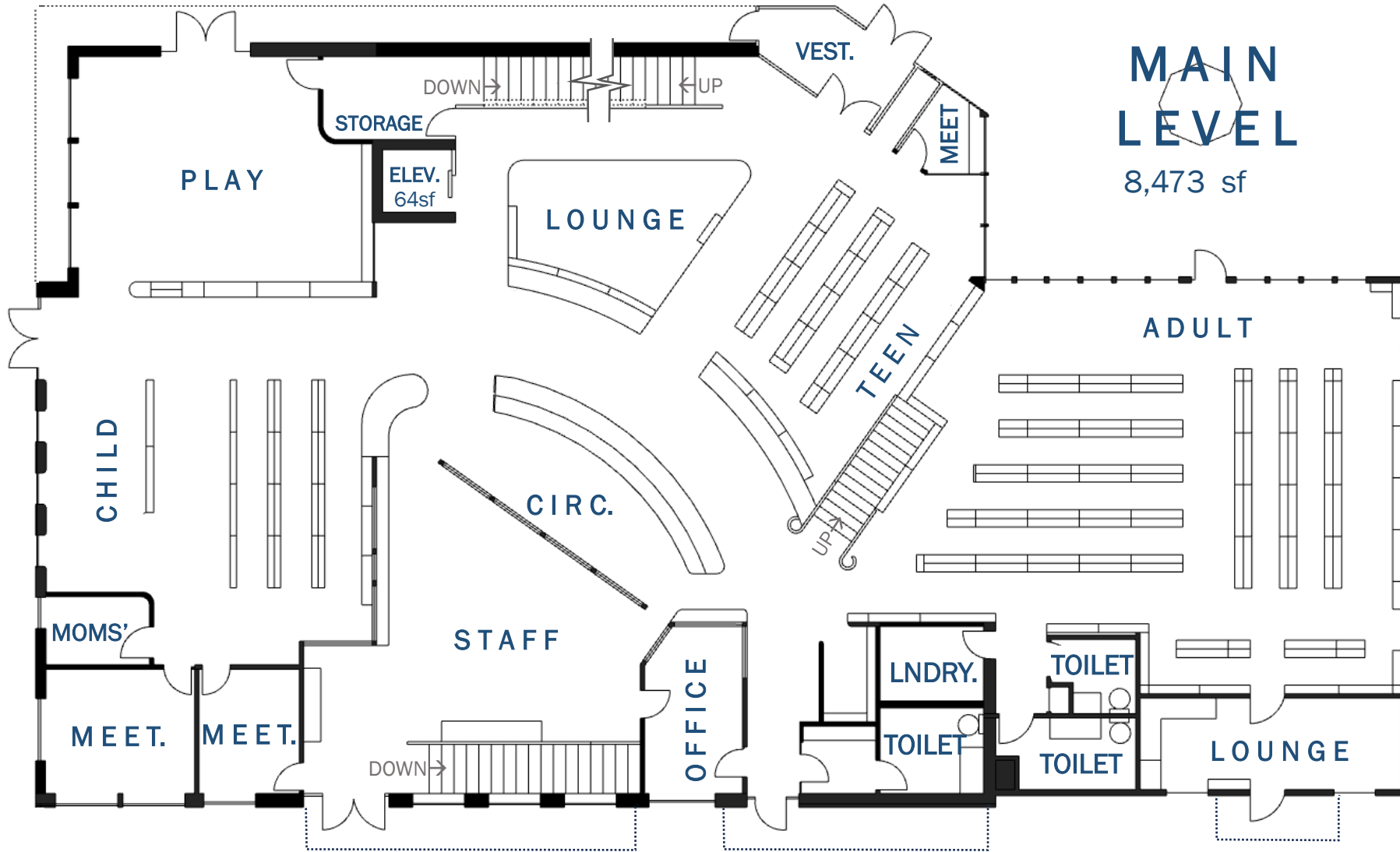
MAIN FLOOR PLAN - UNFURNISHED

Spooner Memorial Library | Schematic Design by Marco Vincent | SEH Inc. | 2.15.2024



MAIN FLOOR PLAN - VISIBILITY CONCEPT

Spooner Memorial Library | Schematic Design by Marco Vincent | SEH Inc. | 2.15.2024



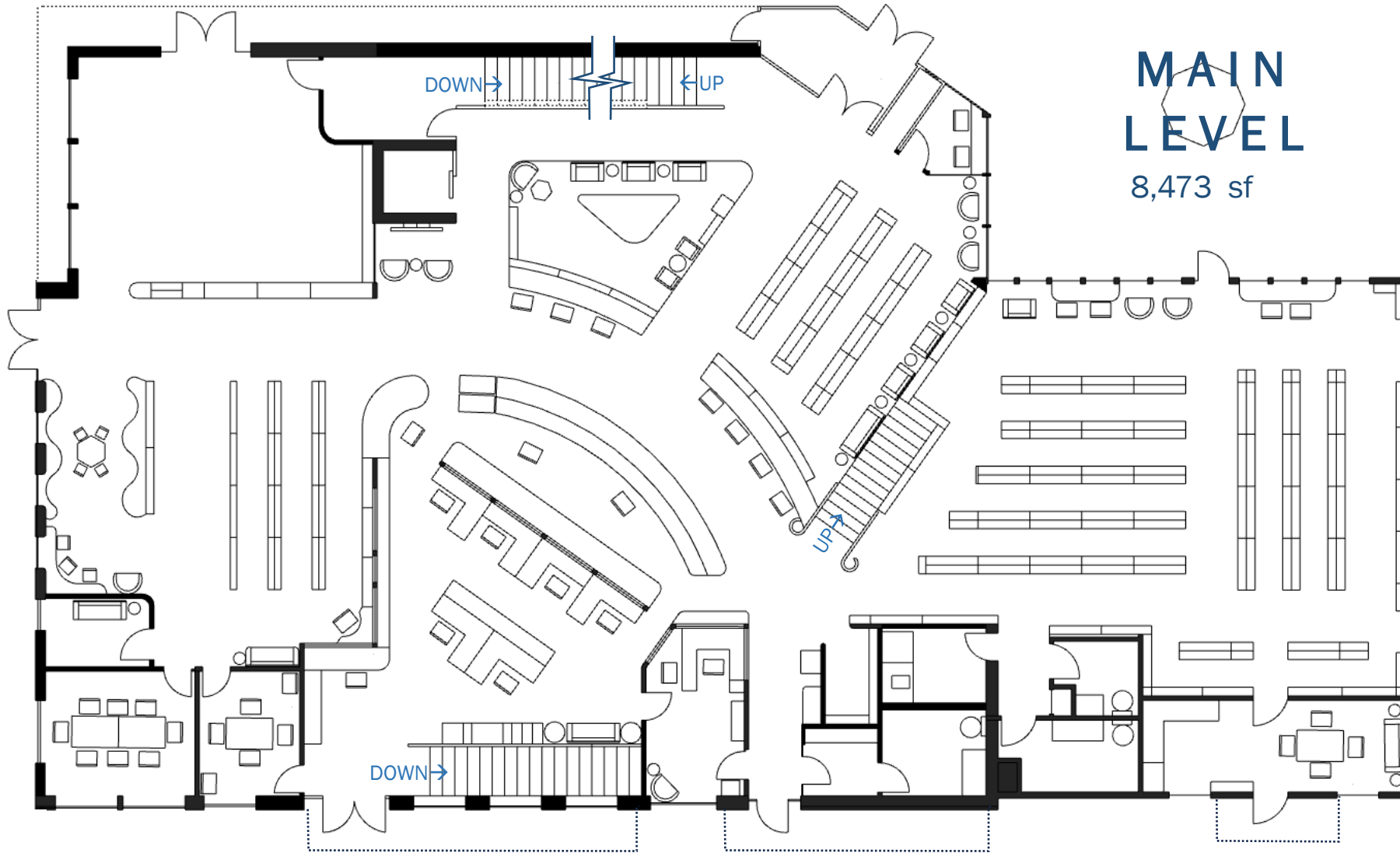
MAIN LEVEL

8,473 sf



MAIN FLOOR PLAN - SHELVES, DESKS, CABINETS ONLY

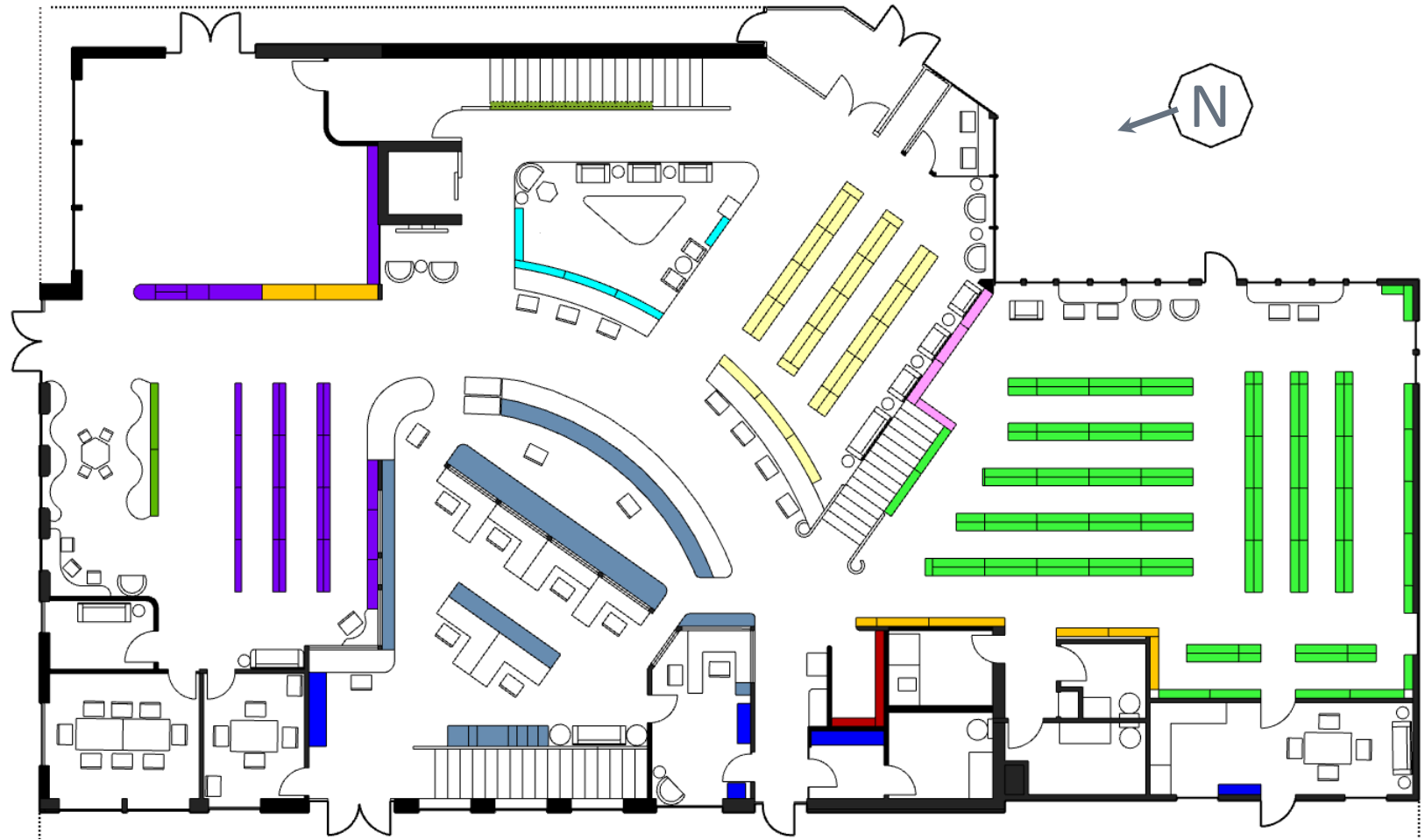
Spooner Memorial Library | Schematic Design by Marco Vincent | SEH Inc. | 2.15.2024



MAIN FLOOR PLAN - FULLY FURNISHED

Spooner Memorial Library | Schematic Design by Marco Vincent | SEH Inc. | 2.15.2024

- ADULT BOOK SHELVES:**
 90 x (188 books per 10"x5'w five row shelf) = 16,920books
- TEEN BOOK SHELVES:**
 29 x (114 books per 10"x3'h x 5'w three row shelf)= +3,306 books
- CHILD BOOKS:**
 23 (9" x 2.5'h x 5'w) picture
 +4 (12"x 2.5'h x 5'w) board
 +3 (12" x 2.5'h x 5'w) easy
 +2 (12" x 2.5'h x 5'w) display
- AUDIO SHELVES**
 4 x (5' w x 6' h) = 2,420 >
 > 1,475 audiobooks
- PUZZLE PLACE:**
 4 x (10" x 3'h x 5'w shelf) = > volume needed
- ART WALLS / SHELVES:**
 77square or cubic feet: stair
 40square feet: child area
- DVD SHELVES**
 5 (5'w x 6'h)+ 2 (5'w x 2.5'h) =3,631 DVDs



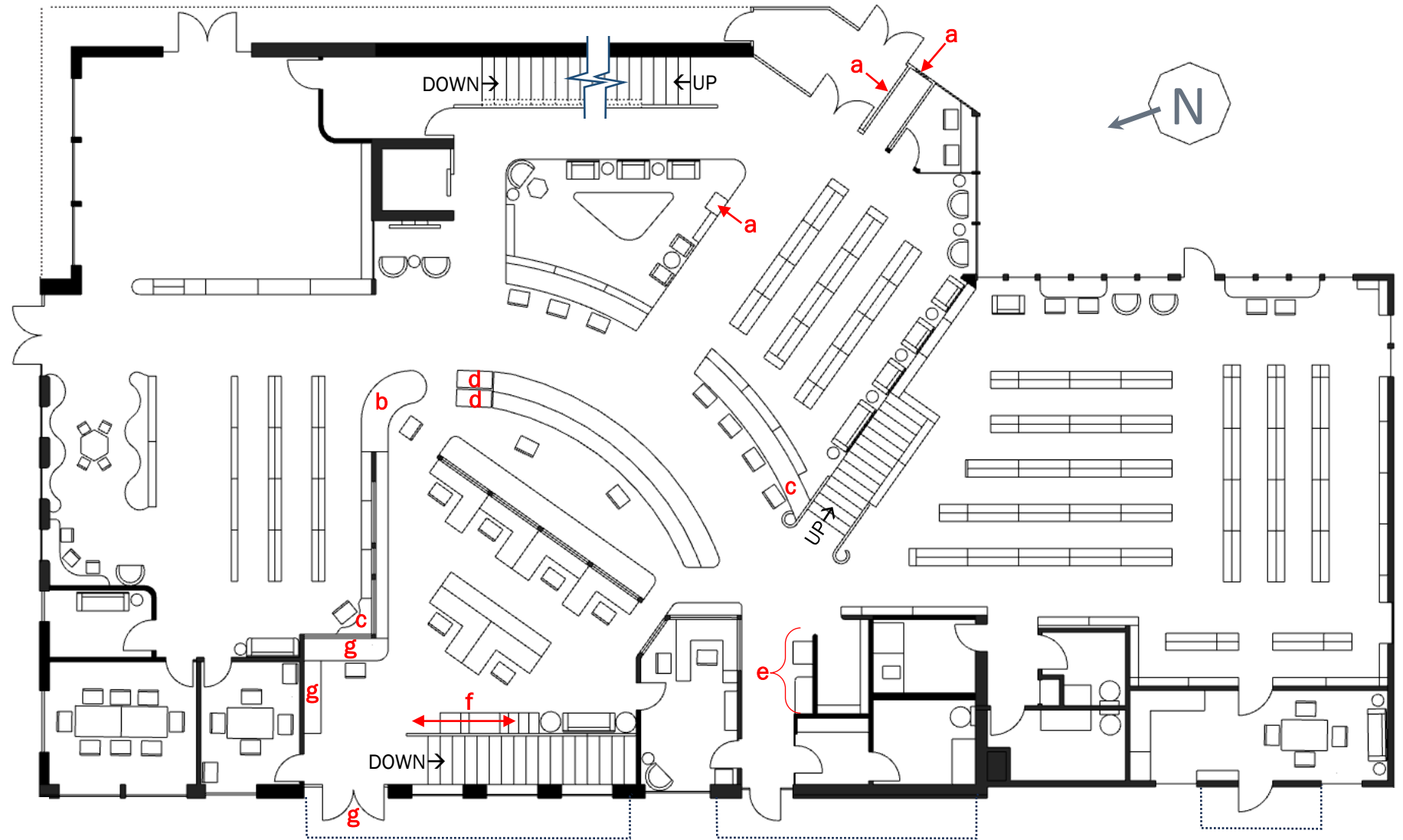
BOOK NOOK:
 3 x (10"x5' four or five row shelves) = +400 books

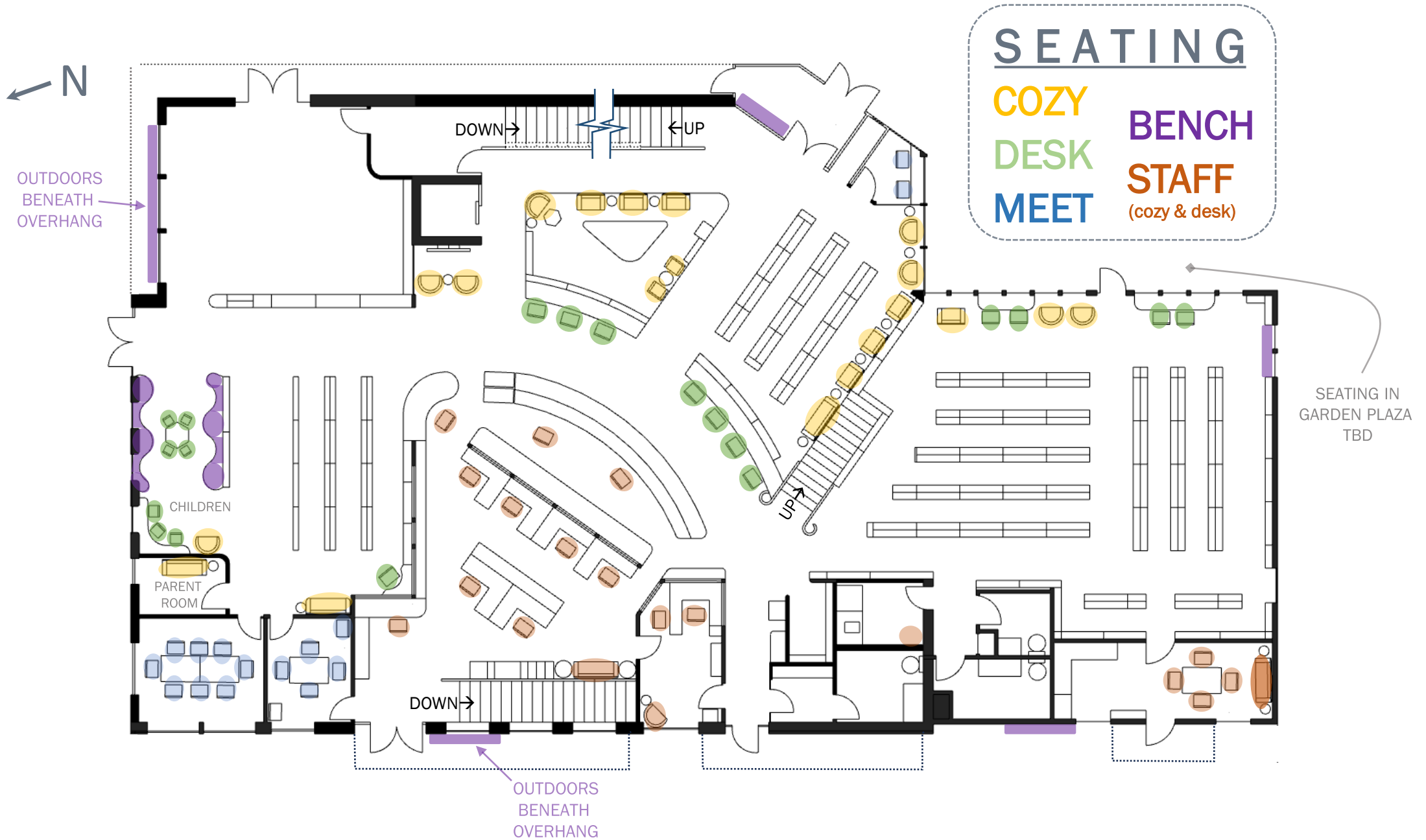
LOW STAFF SHELVES, DRAWERS, CABINETS:
 +510 cubic feet
 (2.5' or 3'h) x 204sf

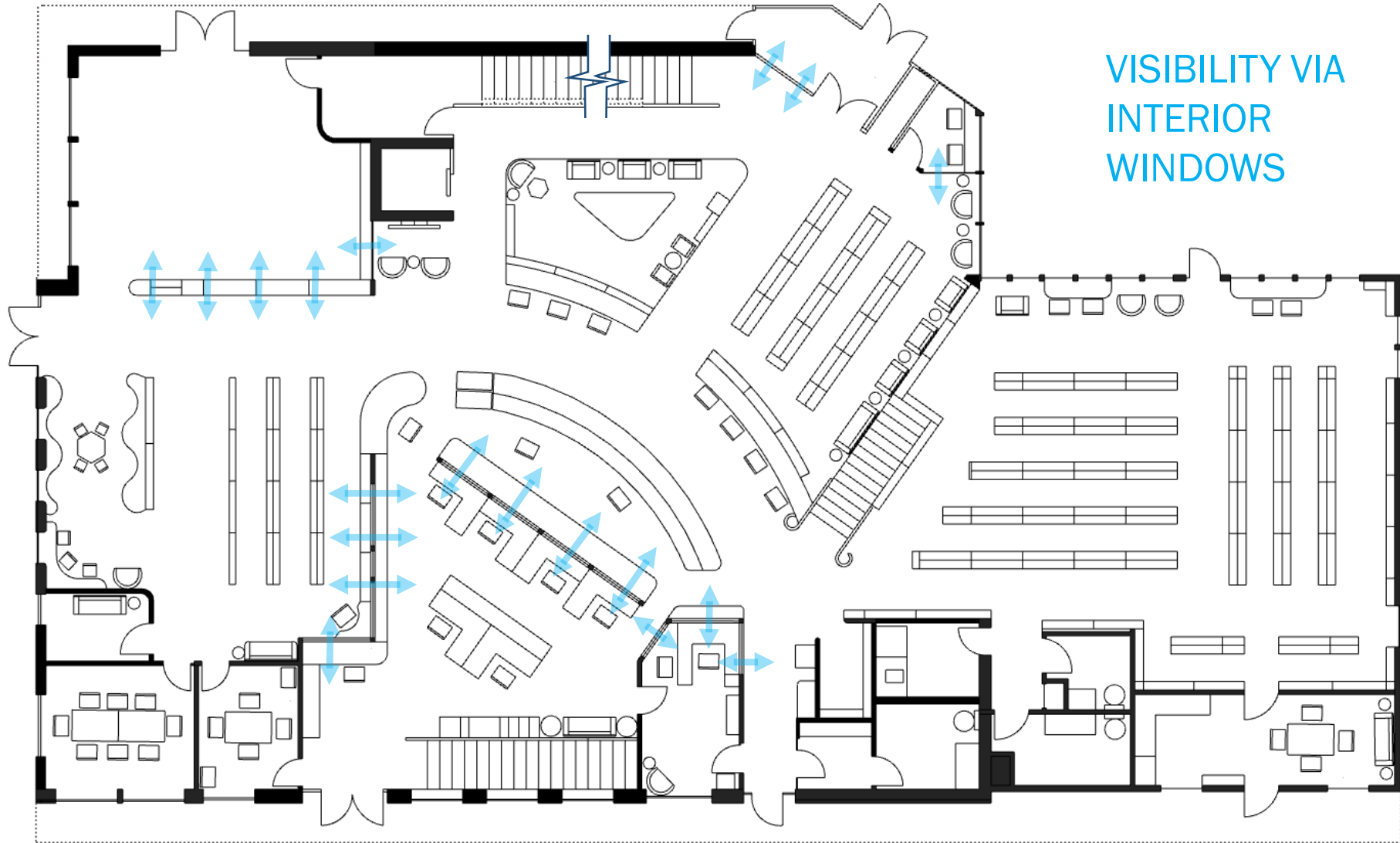
TALL STAFF SHELVES, CUBBIES, CABINETS:
 +400 cubic feet
 (6'h x 67sf)

PATRON / STAFF SERVICES

- a)** BOOK RETURNS
(3 slots; 1 room + 1 cart)
- b)** CHILDREN SERVICES DESK
- c)** CATALOG COMPUTER/DESKS (2)
- d)** BOOK ROLLER CARTS
- e)** COPIER/PRINTER AREA
& counter w/ stapler, paper punch, etc
- f)** BOOK REPAIR
- g)** DELIVERIES
7'W x 6'H cubby shelf, computer at large work desk, staff only entry/exit





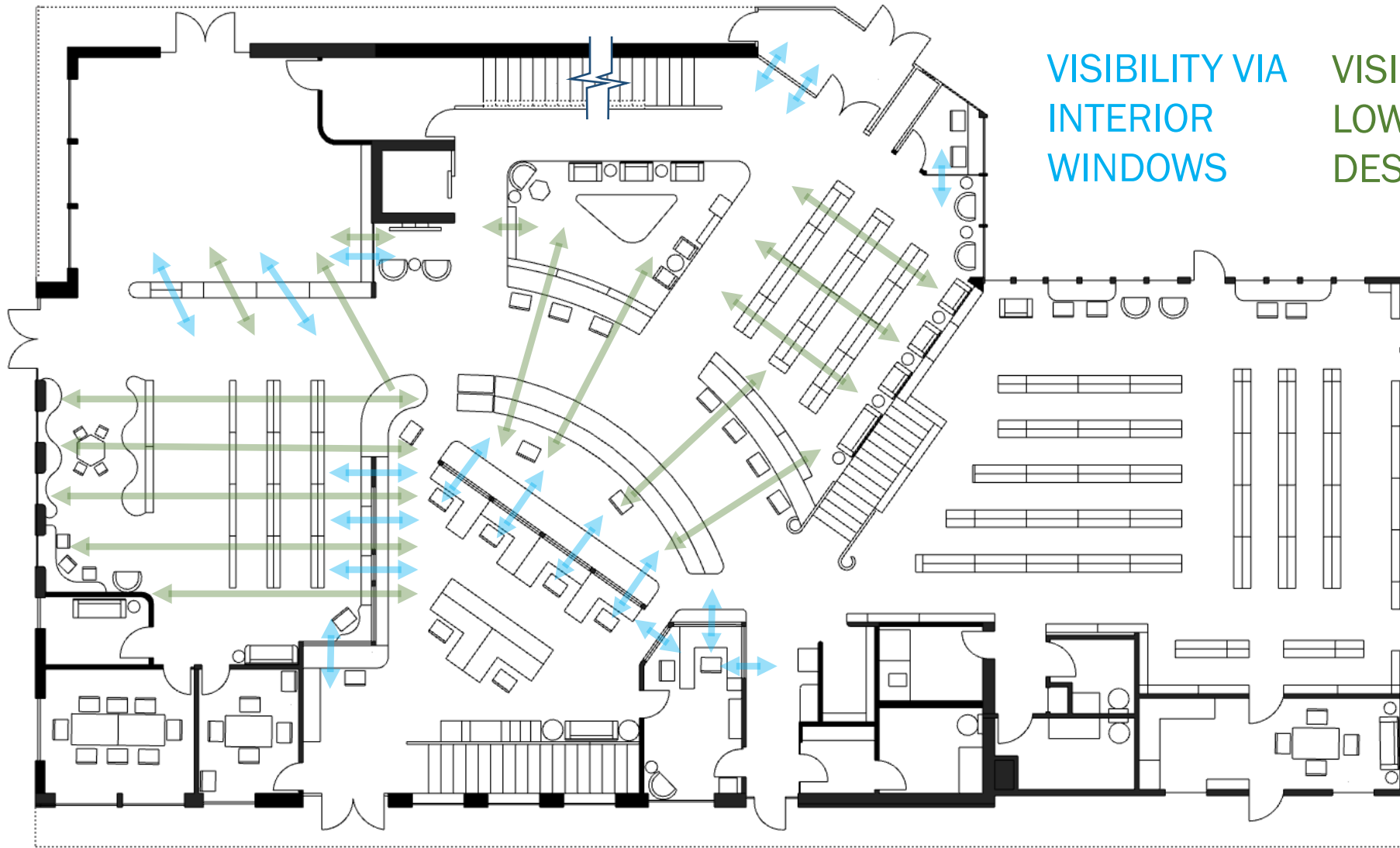


VISIBILITY VIA
INTERIOR
WINDOWS



MAIN FLOOR PLAN - VISIBILITY- INTERIOR WINDOWS

Spooner Memorial Library | Schematic Design by Marco Vincent | SEH Inc. | 2.15.2024



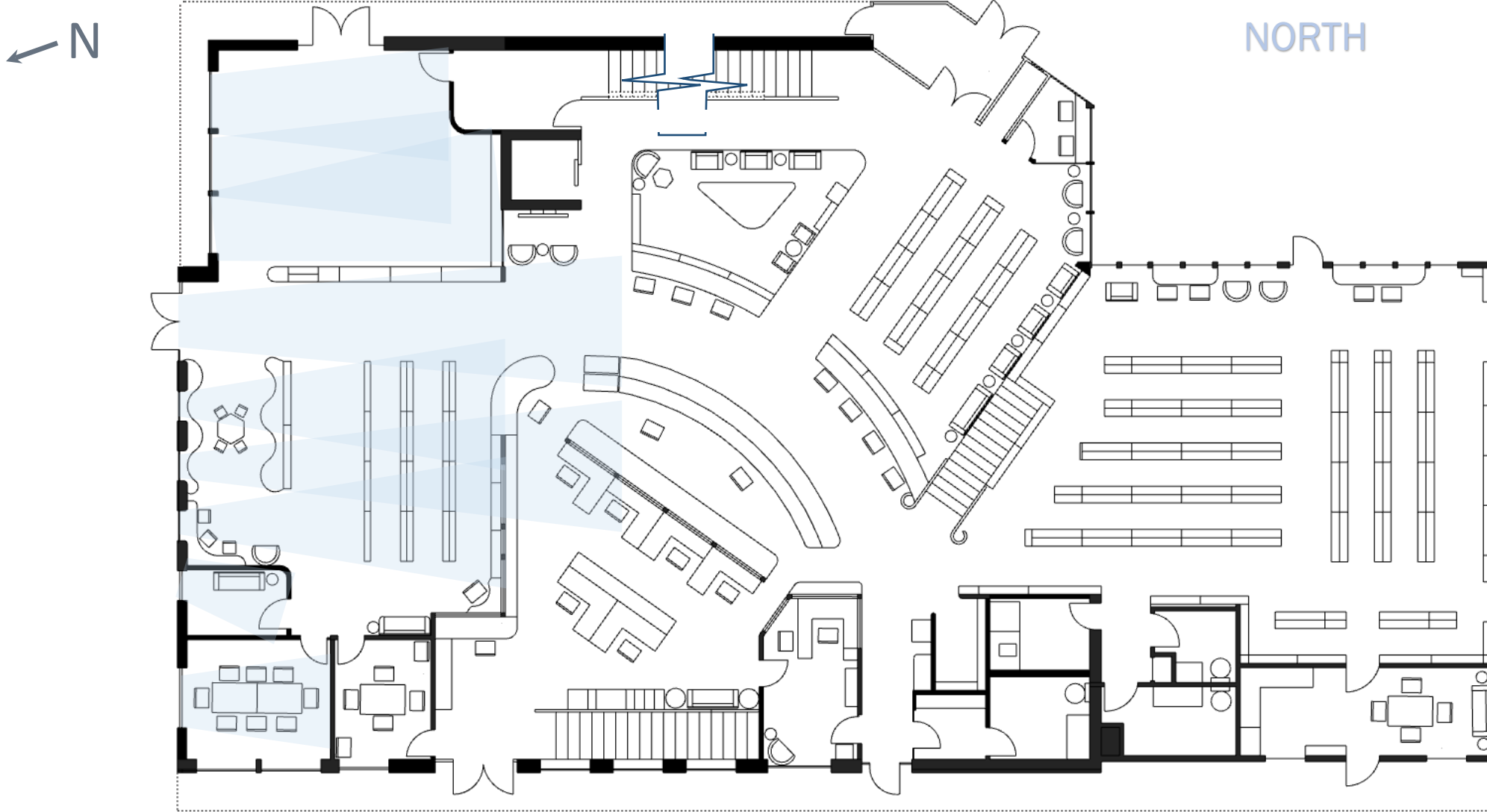
VISIBILITY VIA
INTERIOR
WINDOWS

VISIBILITY OVER
LOW SHELVES &
DESKS



MAIN FLOOR PLAN - VISIBILITY ANALYSIS

Spooner Memorial Library | Schematic Design by Marco Vincent | SEH Inc. | 2.15.2024



MAIN FLOOR PLAN - DAYLIGHTING ANALYSIS

Spooner Memorial Library | Schematic Design by Marco Vincent | SEH Inc. | 2.15.2024

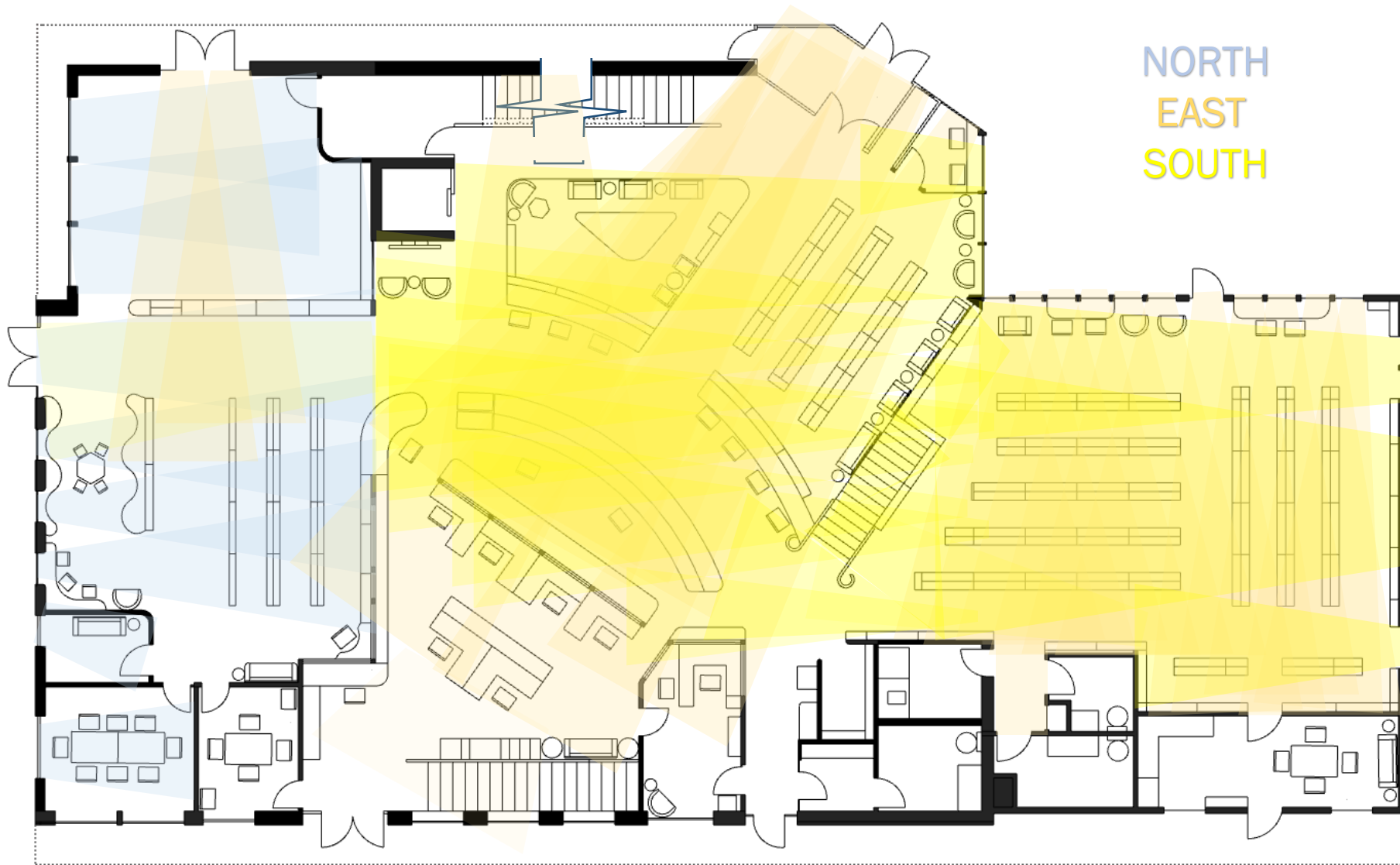


NORTH
EAST



MAIN FLOOR PLAN - DAYLIGHTING ANALYSIS

Spooner Memorial Library | Schematic Design by Marco Vincent | SEH Inc. | 2.15.2024

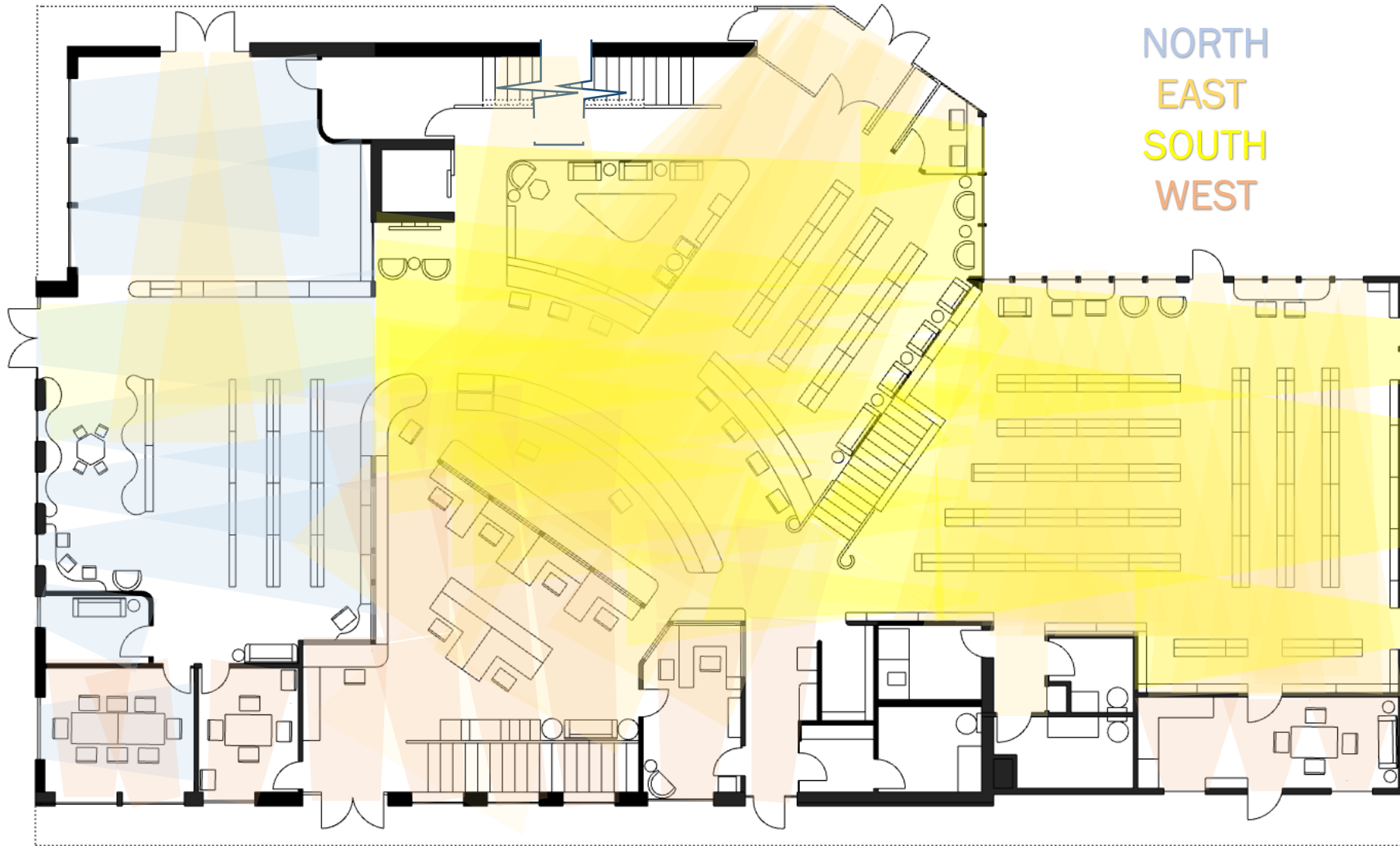


NORTH
EAST
SOUTH



MAIN FLOOR PLAN - DAYLIGHTING ANALYSIS

Spooner Memorial Library | Schematic Design by Marco Vincent | SEH Inc. | 2.15.2024



NORTH
EAST
SOUTH
WEST



MAIN FLOOR PLAN - DAYLIGHTING ANALYSIS

Spooner Memorial Library | Schematic Design by Marco Vincent | SEH Inc. | 2.15.2024

2ND LEVEL

4,770 net sf



CHILD PROG.
585 sf

ELEV.
64sf

OPEN TO BELOW

48sf

STOR.
125sf

TOILET
82sf

JAN

TOILET
82sf

PROGRAM & STUDY
1,235sf

MAKERS
710sf

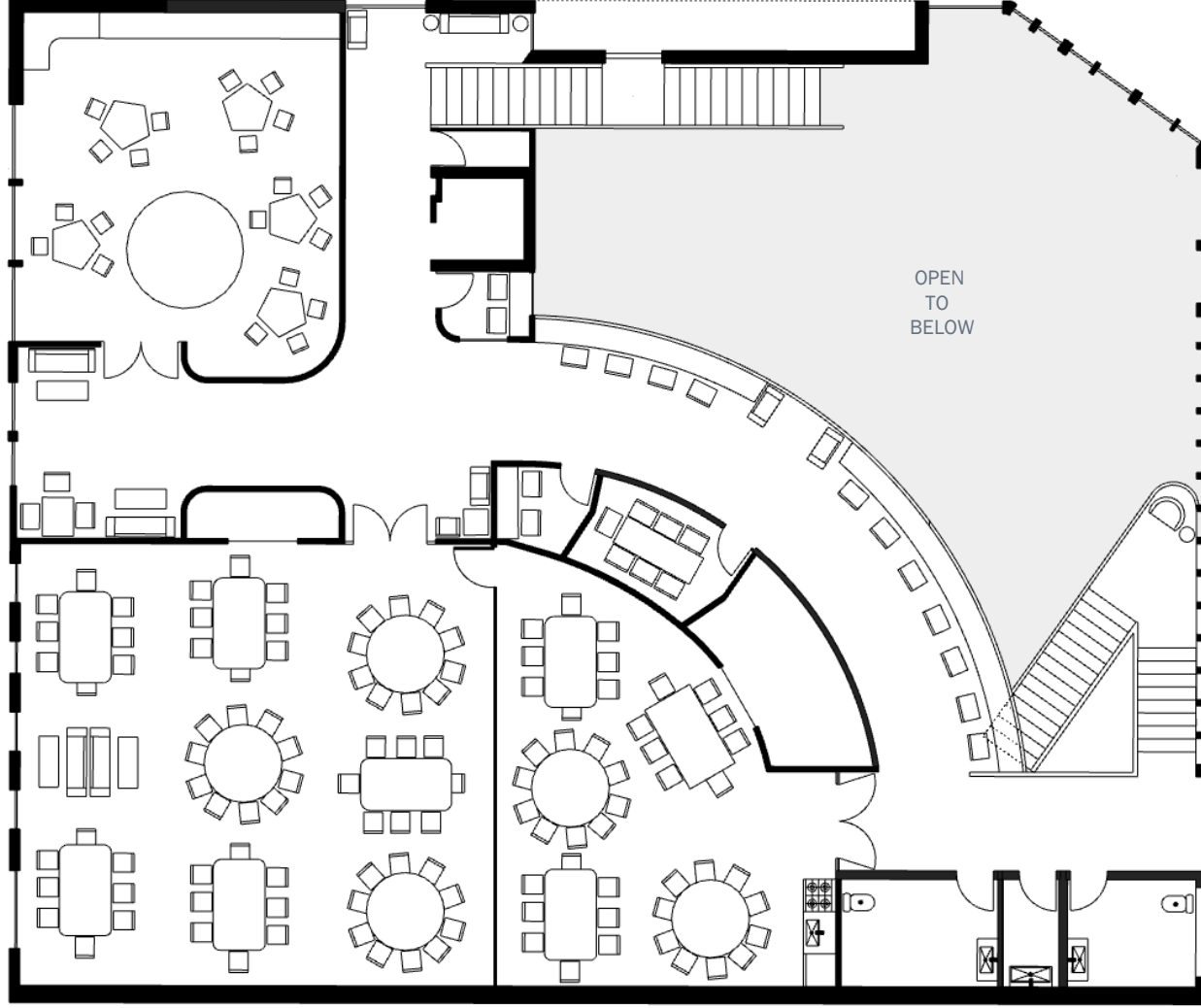
*** 40" H LAMI. GLASS ABOVE 34" H DESK**

*** 44" H LAMI. GLASS ABOVE 38" H RAILING**

*** 38" H RAILING**

SECOND FLOOR PLAN -
FURNISHED FOR PROGRAMMING

Spooner Memorial Library | Schematic Design by Marco Vincent | SEH Inc. | 2.15.2024



2ND LEVEL

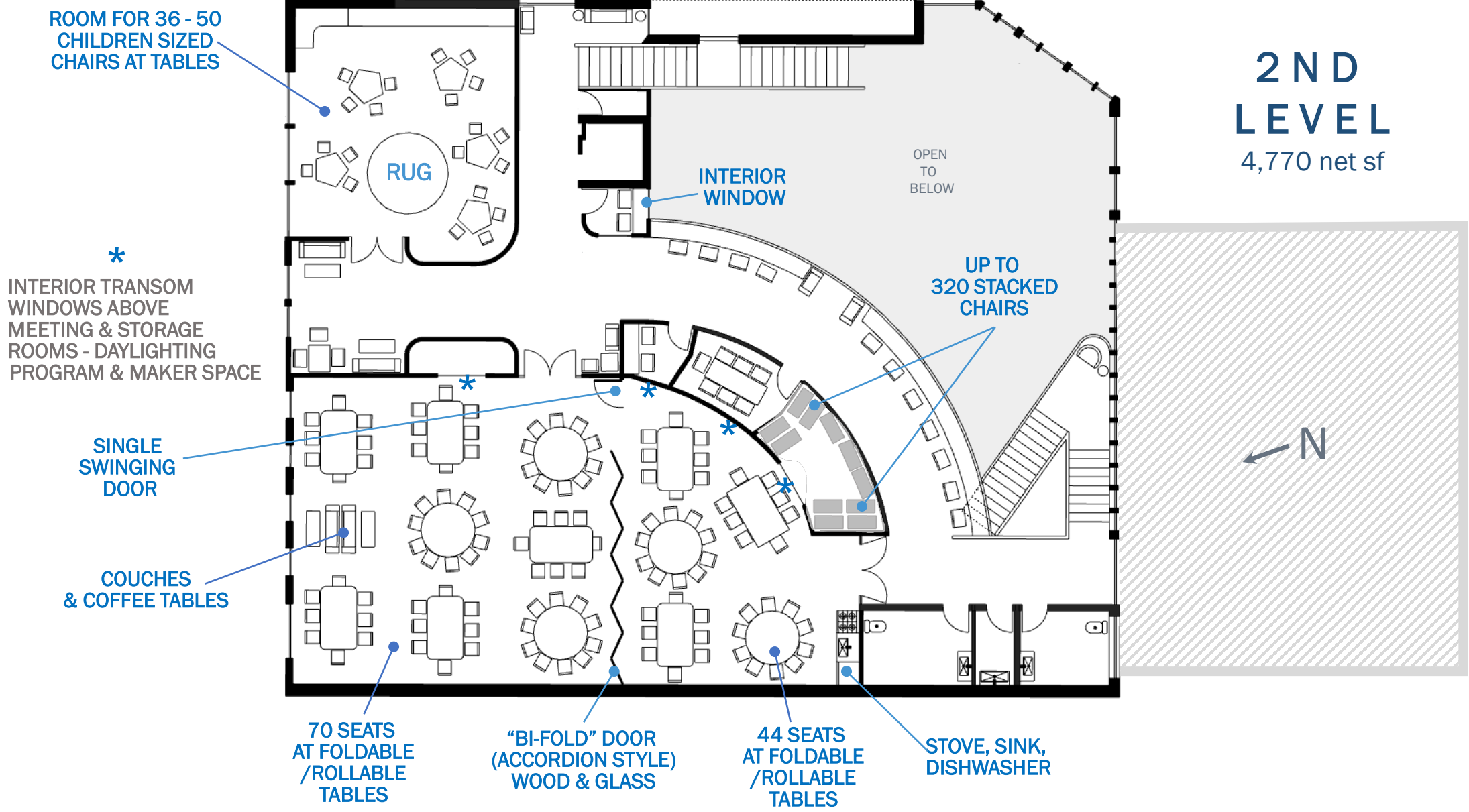
4,770 net sf



SECOND FLOOR PLAN -
FURNISHED FOR PROGRAMMING
Spooner Memorial Library | Schematic Design by Marco Vincent | SEH Inc. | 2.15.2024

2ND LEVEL

4,770 net sf

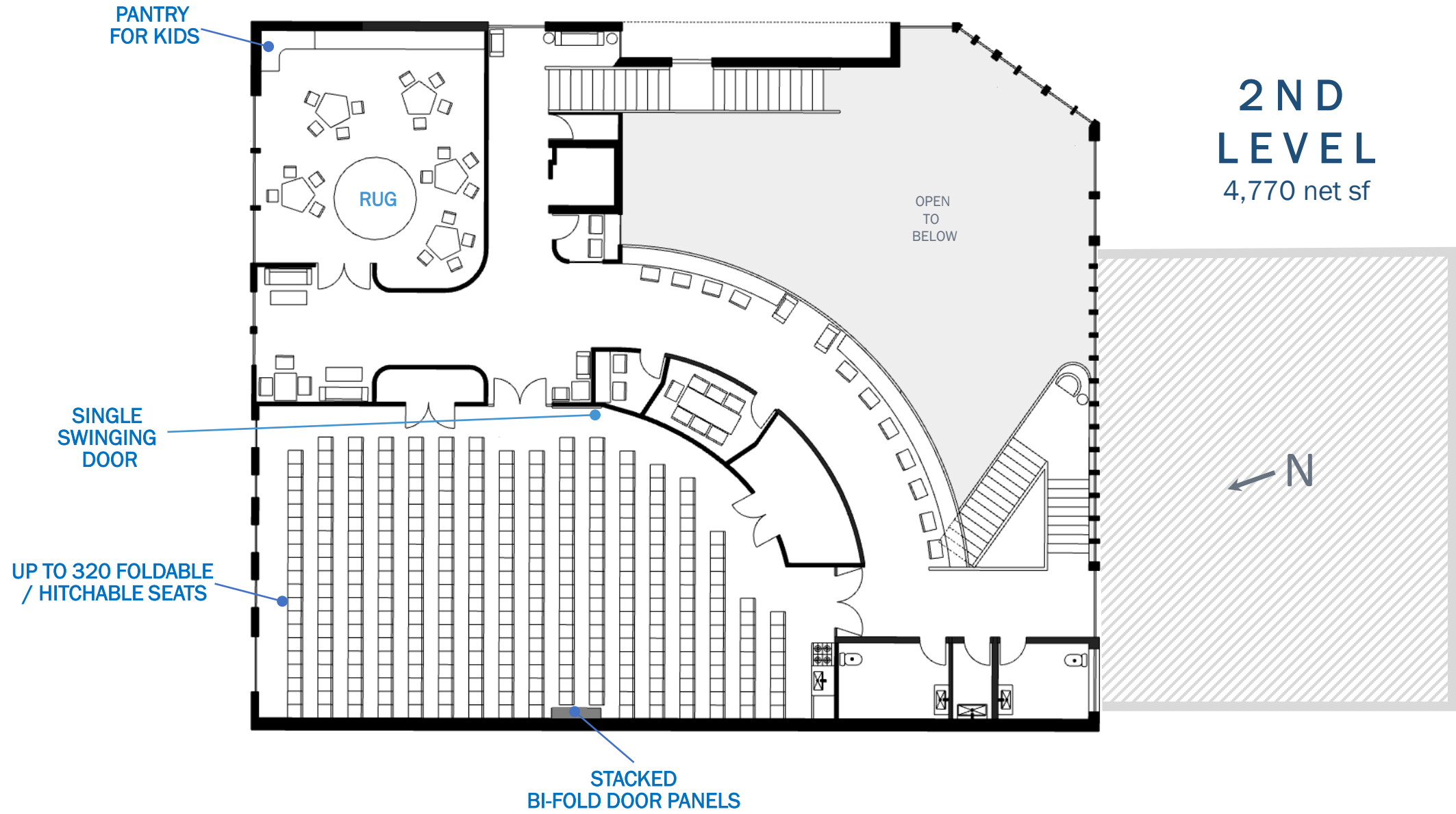


SECOND FLOOR PLAN -
FURNISHED FOR PROGRAMMING

Spooner Memorial Library | Schematic Design by Marco Vincent | SEH Inc. | 2.15.2024

2ND LEVEL

4,770 net sf

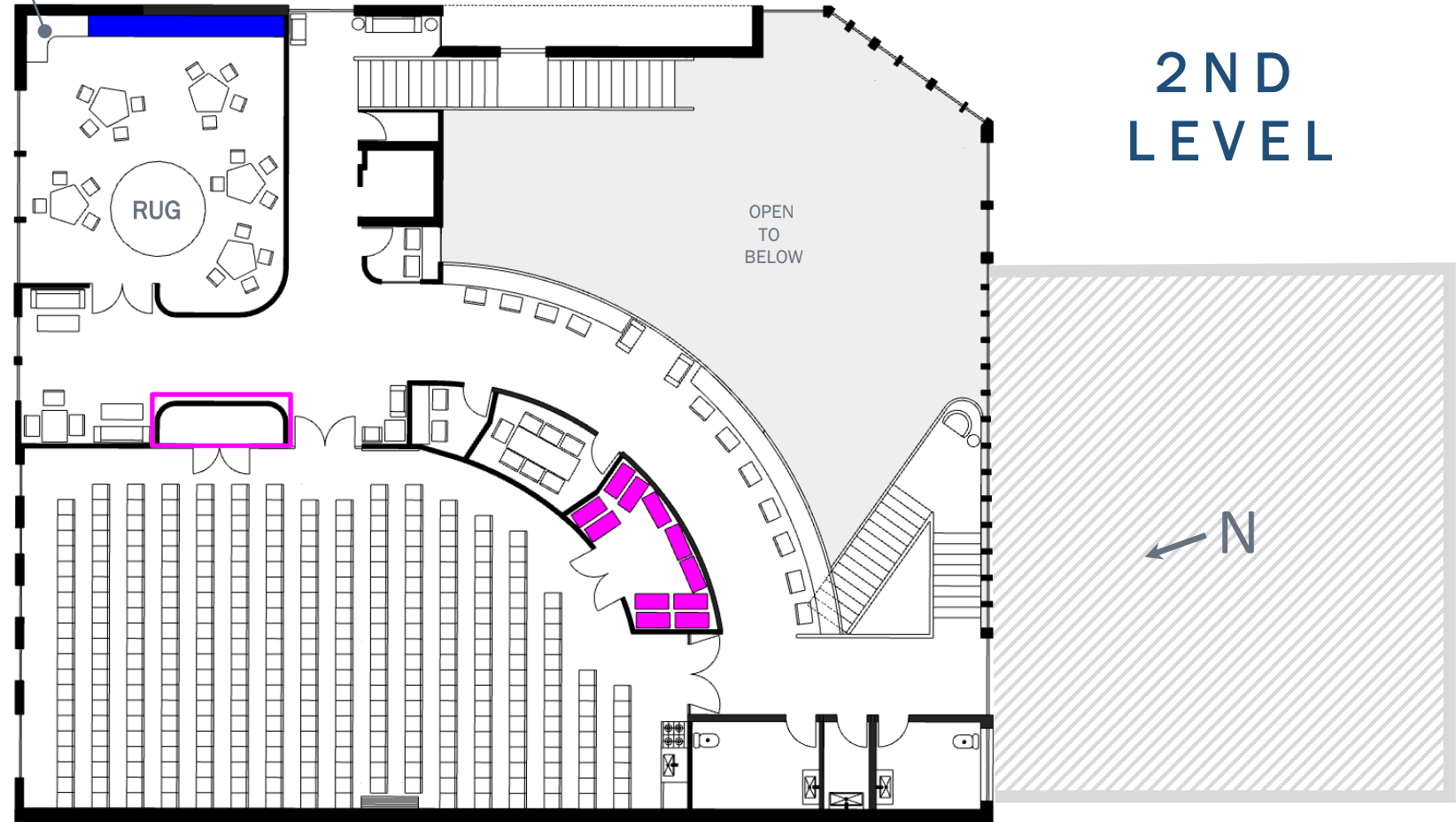


SECOND FLOOR PLAN - FURNISHED FOR PRESENTATIONS

Spooner Memorial Library | Schematic Design by Marco Vincent | SEH Inc. | 2.15.2024

2ND LEVEL

PANTRY FOR KIDS



ADULT BOOK SHELVES:
 90 x (188 books per 10"x5'w five row shelf) = 16,920books

TEEN BOOK SHELVES:
 29 x (114 books per 10"x3'h x 5'w three row shelf)= +3,306 books

CHILD BOOKS:
 23 (9" x 2.5'h x 5'w) picture
 +4 (12"x 2.5'h x 5'w) board
 +3 (12" x 2.5'h x 5'w) easy
 +2 (12" x 2.5'h x 5'w) display

AUDIO SHELVES
 4 x (5' w x 6' h) = 2,420 >
 > 1,475 audiobooks

PUZZLE PLACE:
 4 x (10" x 3'h x 5'w shelf) = > volume needed

ART WALLS / SHELVES:
 77square or cubic feet: stair
 40square feet: child area

DVD SHELVES
 5 (5'w x 6'h) + 2 (5'w x 2.5'h) =3,631 DVDs

TALL STAFF STORAGE:
 +400 cubic feet
 (6'h x 67sf)

LOW STAFF STORAGE:
 +510 cubic feet
 (2.5' or 3'h) x 204sf)

BOOK NOOK:
 3 x (10"x5' four or five row shelves) = +400 books

11x 6-FT-HIGH STACKS = 320 FOLDED CHAIRS
 SWAPPED AS NEEDED WITH 13 FOLDABLE & ROLLABLE TABLES (BTWN. 2 STORAGE ROOMS)

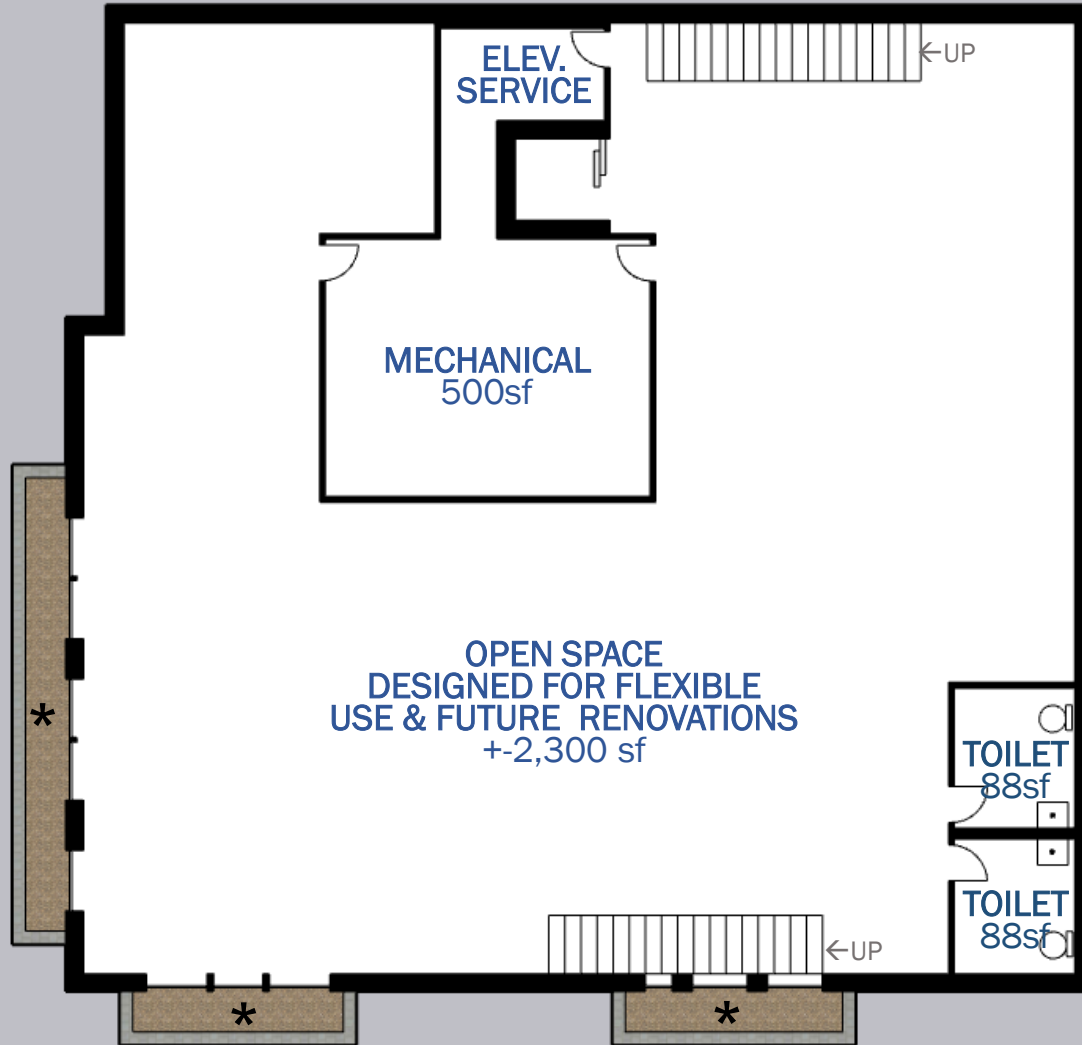


70 SEATS
AT FOLDABLE
/ROLLABLE
TABLES

44 SEATS
AT FOLDABLE
/ROLLABLE
TABLES

SEATING
COZY
DESK
MEET





BASEMENT

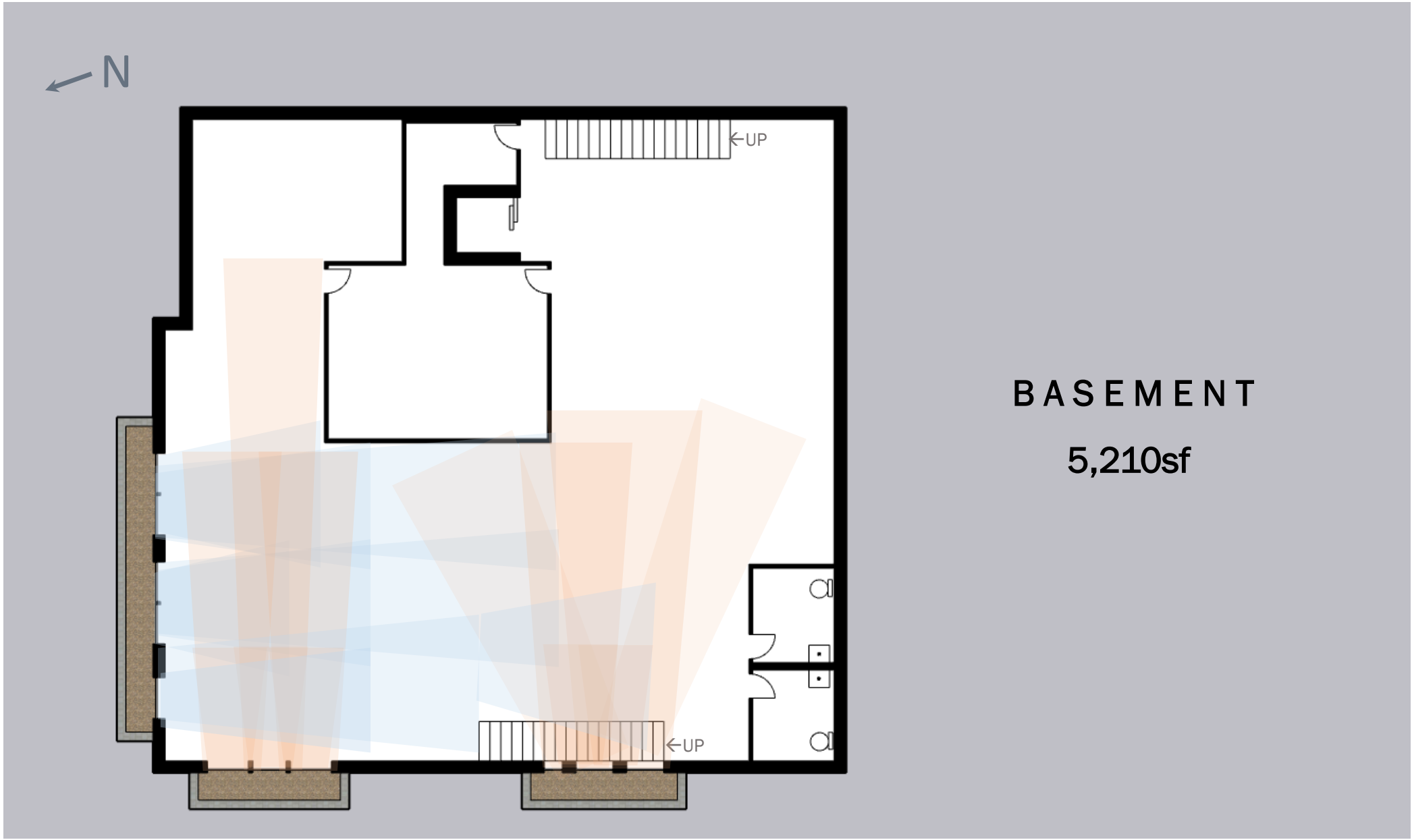
5,210sf

MECHANICAL ROOM IDEAL
ALONG ELEVATOR TO HIDE
DUCTWORK. PRECISE MECH.
RM. SIZE TBD IN MEP & DESIGN
DEVELOPMENT PHASE

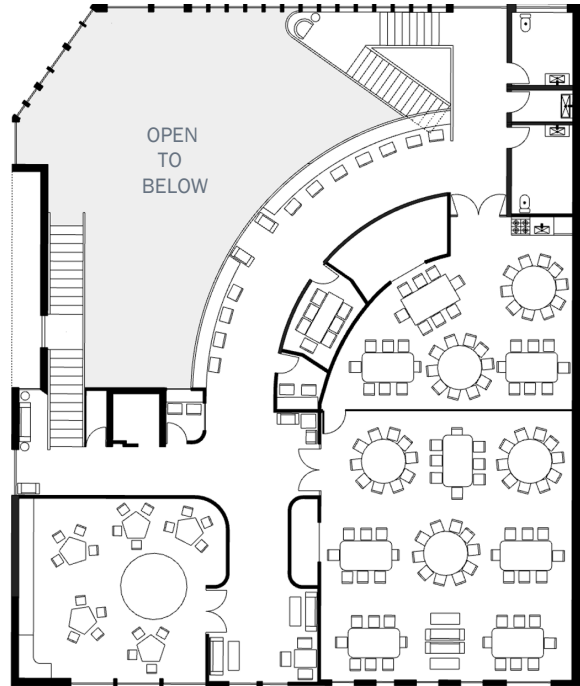
MECHANICAL ROOM IDEAL
ALONG ELEVATOR TO HIDE
DUCTWORK. PRECISE MECH.
RM. SIZE TBD IN MEP & DESIGN
DEVELOPMENT PHASE

BATHROOM PLUMBING TO BE
ROUGHED-IN AT MINIMUM OR
FULLY FINISHED DURING
CONSTRUCTION (TBD)

* WINDOW WELL DEPTH
EQUAL OR LESS THAN
32" BELOW GRADE
: THE DEPTH REQ'D BY CODE

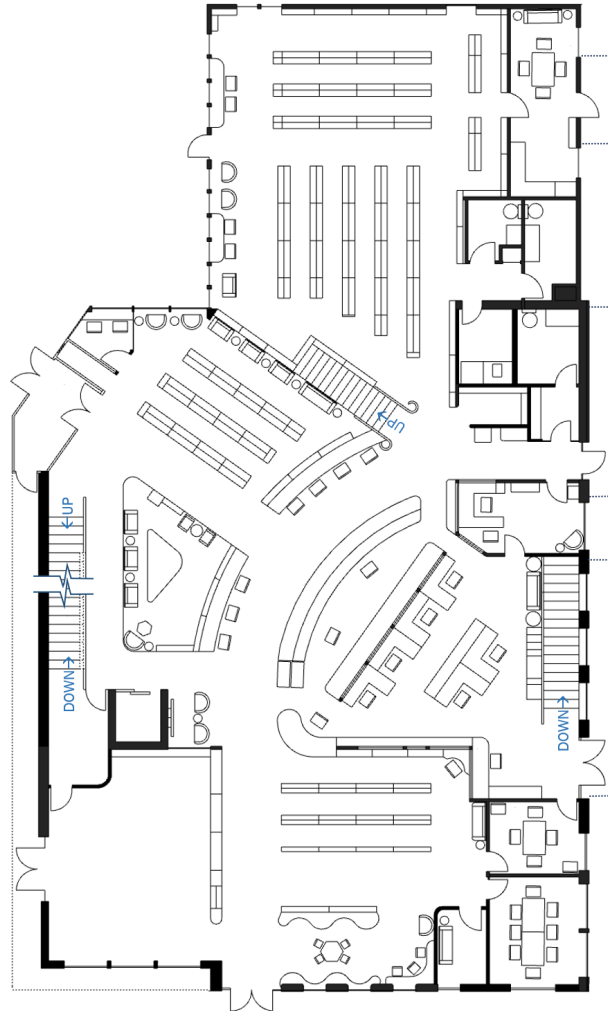


BASEMENT
5,210sf



**2ND
LEVEL**

4,770 net sf



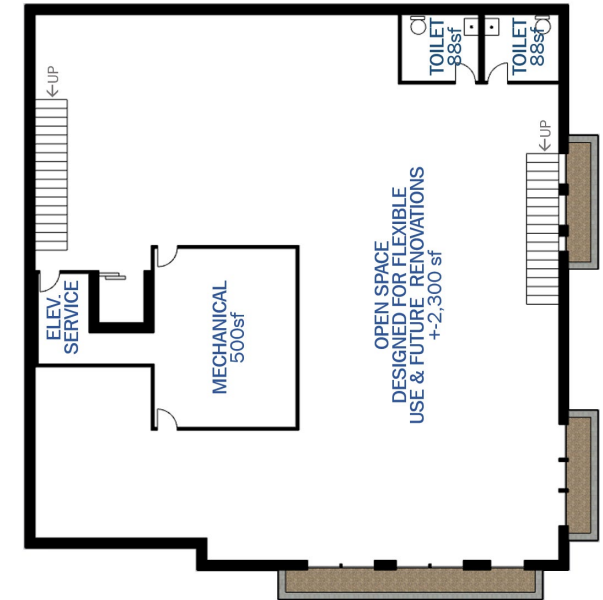
**MAIN
LEVEL**

8,473 net sf



ALL FLOOR PLANS

Spooer Memorial Library | Schematic Design
Marco Vincent | SEH Inc. | 2.15.2024



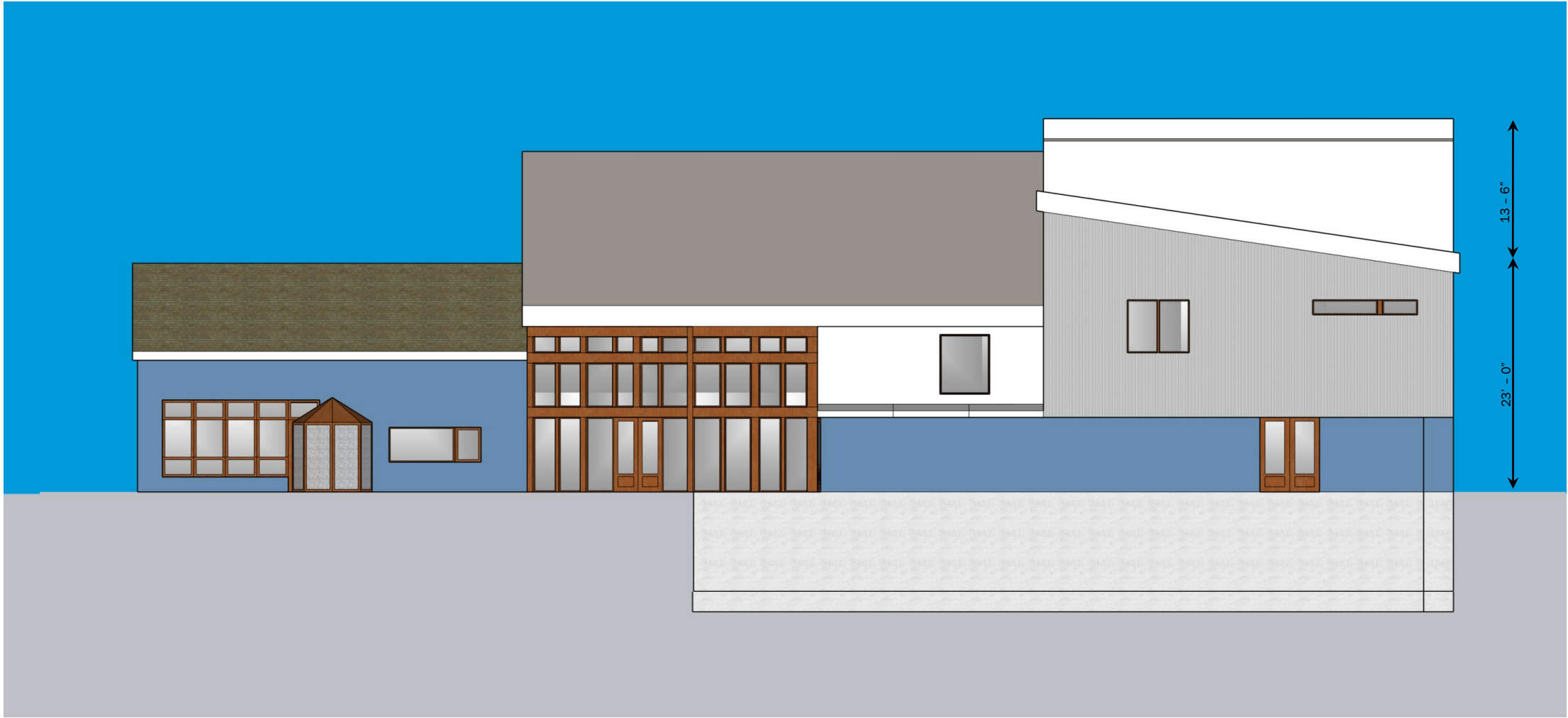
BASEMENT

5,210 net sf

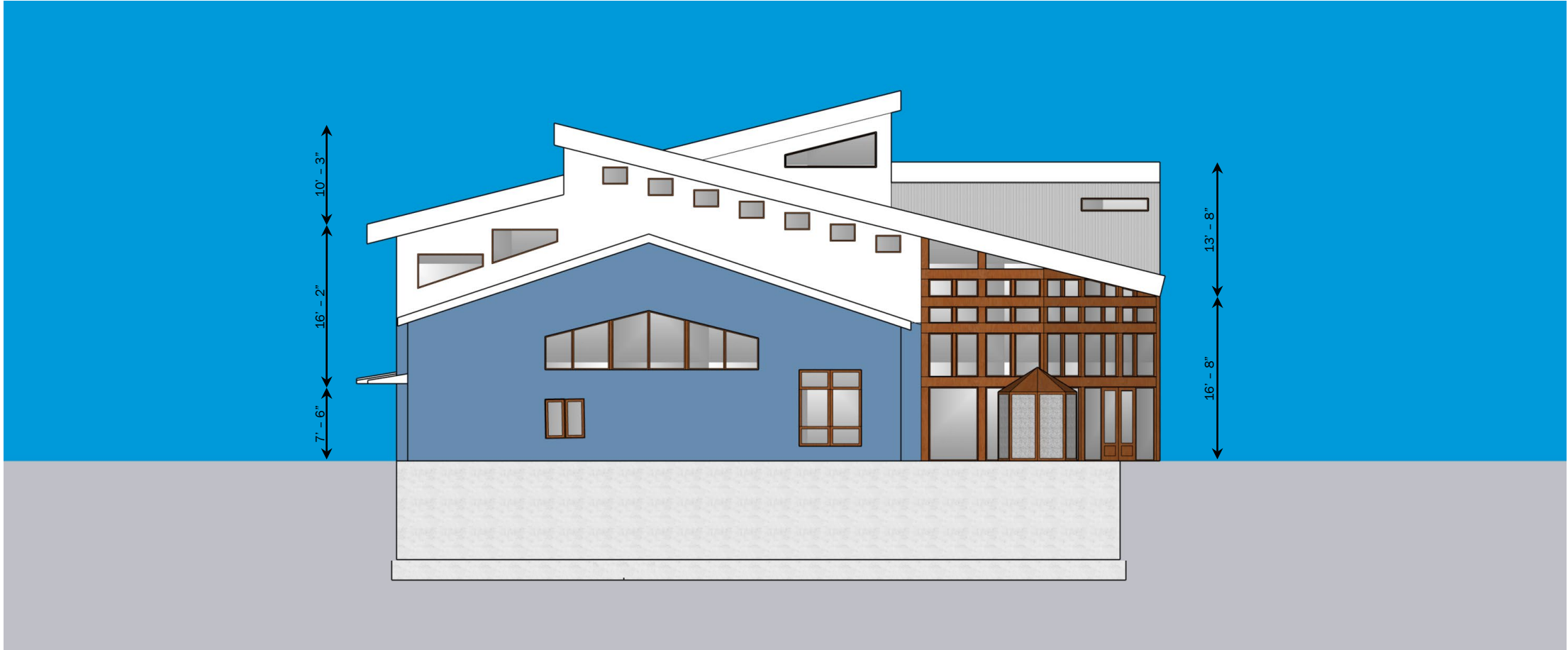
+18,500 TOTAL SQUARE FOOTAGE



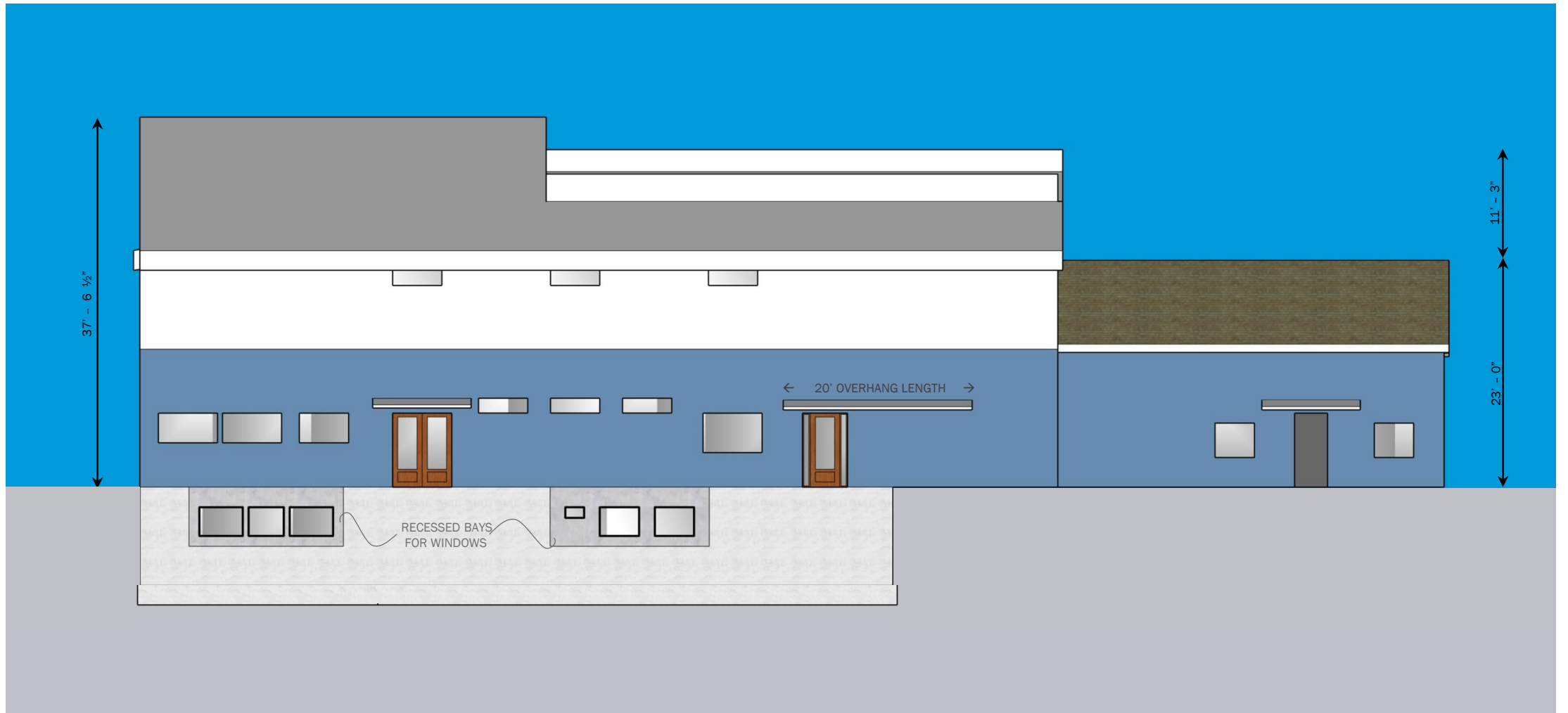
NORTH ELEVATION



EAST ELEVATION



SOUTH ELEVATION



WEST ELEVATION



3D R E N D E R I N G | S K E T C H U P & G O O G L E E A R T H

Spooner Memorial Library | Schematic Design by Marco Vincent | SEH Inc. | 2.15.2024



3D RENDERING | SKETCHUP & GOOGLE EARTH

Spooner Memorial Library | Schematic Design by Marco Vincent | SEH Inc. | 2.15.2024



3D R E N D E R I N G | S K E T C H U P & G O O G L E E A R T H

Spooner Memorial Library | Schematic Design by Marco Vincent | SEH Inc. | 2.15.2024



3D R E N D E R I N G | S K E T C H U P & G O O G L E E A R T H

Spooner Memorial Library | Schematic Design by Marco Vincent | SEH Inc. | 2.15.2024



3D R E N D E R I N G | S K E T C H U P & G O O G L E E A R T H

Spooner Memorial Library | Schematic Design by Marco Vincent | SEH Inc. | 2.15.2024



3D R E N D E R I N G | S K E T C H U P & G O O G L E E A R T H

Spooner Memorial Library | Schematic Design by Marco Vincent | SEH Inc. | 2.15.2024



3D R E N D E R I N G | S K E T C H U P & G O O G L E E A R T H

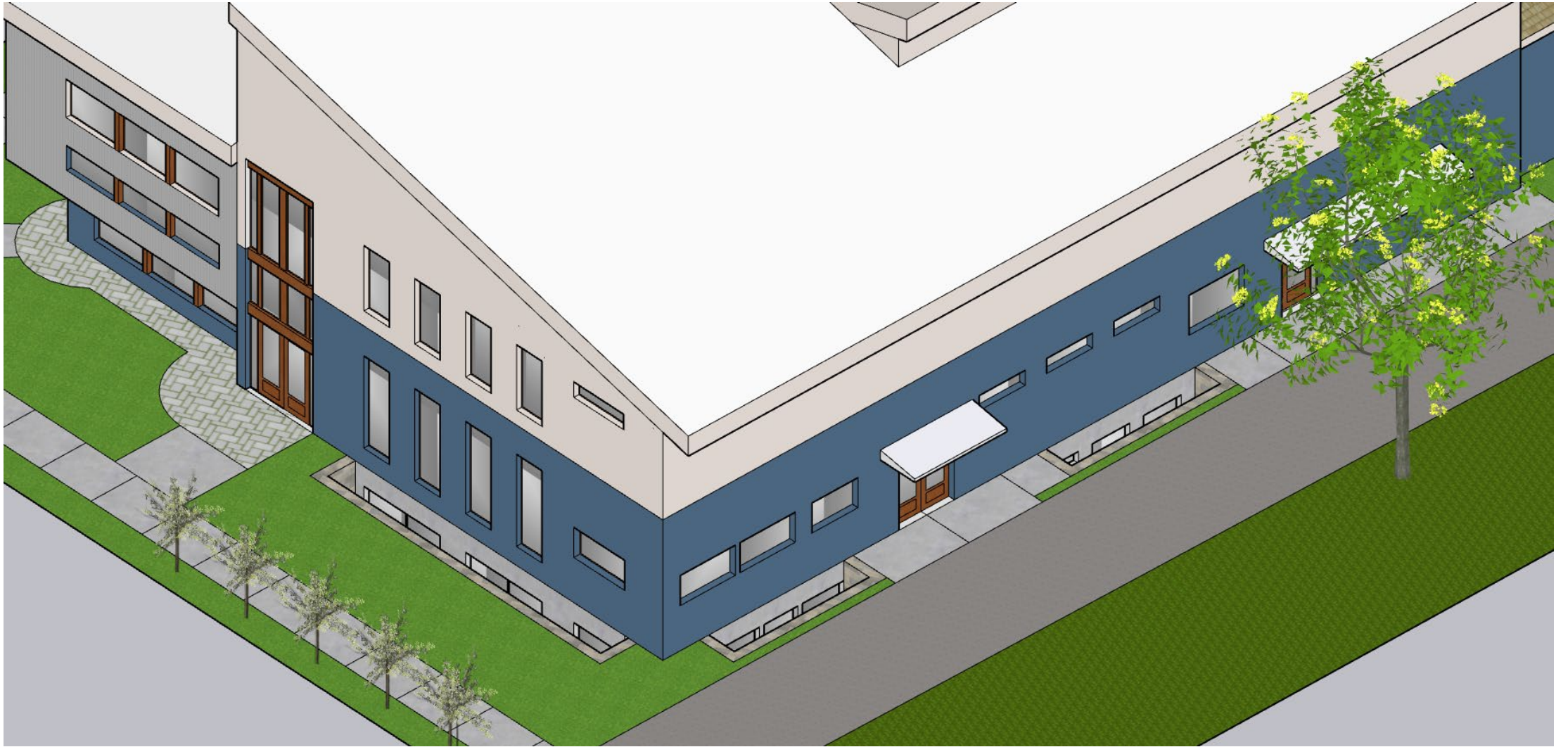
Spooner Memorial Library | Schematic Design by Marco Vincent | SEH Inc. | 2.15.2024



3D R E N D E R I N G | S K E T C H U P & G O O G L E E A R T H

Spooner Memorial Library | Schematic Design by Marco Vincent | SEH Inc. | 2.15.2024





3D RENDERING | SKETCHUP & GOOGLE EARTH

Spooner Memorial Library | Schematic Design by Marco Vincent | SEH Inc. | 2.15.2024



3D R E N D E R I N G | S K E T C H U P & G O O G L E E A R T H

Spooner Memorial Library | Schematic Design by Marco Vincent | SEH Inc. | 2.15.2024



3D R E N D E R I N G | S K E T C H U P & G O O G L E E A R T H

Spooner Memorial Library | Schematic Design by Marco Vincent | SEH Inc. | 2.15.2024

SPOONER MEMORIAL LIBRARY

SCHEMATIC DESIGN DRAWING SET - 15 FEBRUARY 2024



Building a Better World
for All of Us®



OWNER'S REPRESENTATIVE
ANGIE BODZISLAW | Director of Library
director@spoonerlibrary.org | 715-635-2792

DESIGN LEAD / CLIENT LIASON:
MARCO VINCENT Assoc.AIA, LEED AP, WELL AP, CDT, phius CPHC
mvincent@sehinc.com | 651-336-8885

PRINCIPAL / PROJECT MNGR:
BRIAN BERGSTROM AIA, NCARB, LEED AP BD+C
bbergstrom@sehinc.com | 952-215-8118